

À des fins de recherche uniquement

Anticorps Polyclonal de lapin anti-GSTM3



Numéro de catalogue: 15214-1-AP

Phare

15 Publications

Informations de base

Numéro de catalogue:

15214-1-AP

Taille:

150ul, Concentration: 350 µg/ml by Nanodrop and 220 µg/ml by Bradford method using BSA as the standard;

Hôte:

Lapin

Isotype:

IgG

Immunogen Catalog Number:

AG7375

Numéro d'acquisition GenBank:

BC000088

Identification du gène (NCBI):

2947

Nom complet:

glutathione S-transferase mu 3 (brain)

MW calculé

27 kDa

MW observés:

27-29 kDa

Méthode de purification:

Purification par affinité contre l'antigène

Dilutions recommandées:

WB 1:1000-1:4000

IP 0.5-4.0 µg for IP and 1:200-1:1000 for WB

IHC 1:20-1:200

Applications

Applications testées:

IHC, IP, WB, ELISA

Demandes citées:

IHC, WB

Spécificité de l'espèce:

Humain, rat, souris

Espèces citées:

bovin, Humain, rat, souris

Remarque-IHC: il est suggéré de démasquer l'antigène avec un tampon de TE buffer pH 9,0; (*) A défaut, 'le démasquage de l'antigène peut être 'effectué avec un tampon citrate pH 6,0.

Contrôles positifs:

WB : tissu testiculaire de souris, tissu testiculaire de rat, tissu testiculaire humain

IP : tissu testiculaire de souris,

IHC : tissu testiculaire humain,

Informations générales

GSTM3 is a cytosolic enzyme involved in prostaglandin and leukotriene synthesis and in the metabolism of toxic compounds, such as chemotherapeutic drugs, insecticides, herbicides, carcinogens, and by-products of oxidative stress. GSTM3 is expressed in testis, brain, lung, and lymphocytes. GSTM3 have been reported to be dysregulated in cancers like prostate cancer and colon cancer.

Publications notables

Autrice	Pubmed ID	Journal	Application
Ming Xu	31775802	Part Fibre Toxicol	WB
Hanshu Wang	34647995	Endocrinology	WB
Dong Huang	34015269	Cell Metab	WB

Stockage

Stockage:

Stocker à -20°C. Stable pendant un an après l'expédition.

Tampon de stockage:

PBS avec azoture de sodium à 0,02 % et glycérol à 50 % pH 7,3

L'aliquotage n'est pas nécessaire pour le stockage à -20C

***** Les 20ul contiennent 0,1% de BSA.**

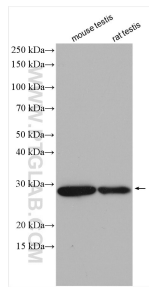
For technical support and original validation data for this product please contact:

T: 1 (888) 4PTGLAB (1-888-478-4522) (toll free in USA), or 1(312) 455-8498 (outside USA)

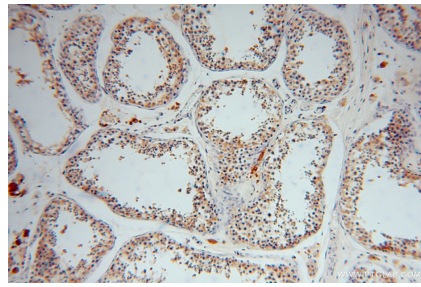
E: proteintech@ptglab.com
W: ptglab.com

This product is exclusively available under Proteintech Group brand and is not available to purchase from any other manufacturer.

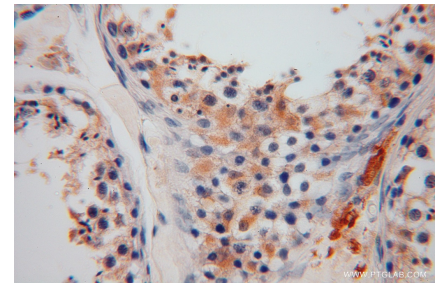
Données de validation sélectionnées



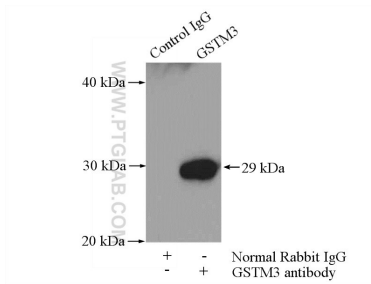
Various lysates were subjected to SDS PAGE followed by western blot with 15214-1-AP (GSTM3 antibody) at dilution of 1:2000 incubated at room temperature for 1.5 hours.



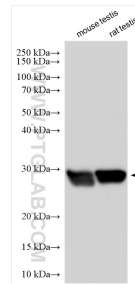
Immunohistochemical analysis of paraffin-embedded human testis using 15214-1-AP (GSTM3 antibody) at dilution of 1:100 (under 10x lens).



Immunohistochemical analysis of paraffin-embedded human testis using 15214-1-AP (GSTM3 antibody) at dilution of 1:100 (under 40x lens).



IP Result of anti-GSTM3 (IP:15214-1-AP, 4ug; Detection:15214-1-AP 1:300) with mouse testis tissue lysate 4000ug.



Various lysates were subjected to SDS PAGE followed by western blot with 15214-1-AP (GSTM3 antibody) at dilution of 1:6000 incubated at room temperature for 1.5 hours.