

À des fins de recherche uniquement

# Anticorps Polyclonal de lapin anti-PSMA7



Numéro de catalogue: 15219-1-AP

Phare

9 Publications

## Informations de base

Numéro de catalogue:

15219-1-AP

Taille:

150ul, Concentration: 450 µg/ml by Nanodrop and 187 µg/ml by Bradford method using BSA as the standard;

Hôte:

Lapin

Isotype:

IgG

Immunogen Catalog Number:

AG7389

Numéro d'acquisition GenBank:

BC004427

Identification du gène (NCBI):

5688

Nom complet:

proteasome (prosome, macropain) subunit, alpha type, 7

MW calculé

28 kDa

MW observés:

28-30 kDa

Méthode de purification:

Purification par affinité contre l'antigène

Dilutions recommandées:

WB 1:3000-1:15000

IP 0.5-4.0 ug for IP and 1:500-1:1000 for WB

IHC 1:200-1:1000

IF 1:20-1:200

## Applications

Applications testées:

FC, IF, IHC, IP, WB, ELISA

Demandes citées:

WB

Spécificité de l'espèce:

Humain, rat, souris

Espèces citées:

Humain, rat, souris

**Remarque-IHC: il est suggéré de démasquer l'antigène avec un tampon de TE buffer pH 9,0; (\*) A défaut, 'le démasquage de l'antigène peut être 'effectué avec un tampon citrate pH 6,0.**

Contrôles positifs:

WB : cellules HepG2, cellules HeLa

IP : tissu cérébral de souris,

IHC : tissu de cancer du foie humain,

IF : cellules HeLa,

## Informations générales

PSMA7(Proteasome subunit alpha type-7) is also named HSPC and belongs to the peptidase T1A family. It is an  $\alpha$ -type subunit of the 20S proteasome core complex and participates in degrading proteins through the ubiquitin-proteasome pathway (UPP) which plays an important role in the regulation of cell proliferation or cell cycle control, transcriptional regulation, immune and stress response, cell differentiation, and apoptosis(PMID: 19442227).

## Publications notables

Autrice	Pubmed ID	Journal	Application
Jordan J S VerPlank	29076578	Glia	WB
Han Wu	32450067	Exp Cell Res	WB
Yang Liuzhong L	23839082	Cell Physiol Biochem	WB

## Stockage

Stockage:

Stocker à -20°C. Stable pendant un an après l'expédition.

Tampon de stockage:

PBS avec azoture de sodium à 0,02 % et glycérol à 50 % pH 7,3

L'aliquotage n'est pas nécessaire pour le stockage à -20C

\*\*\* Les 20ul contiennent 0,1% de BSA.

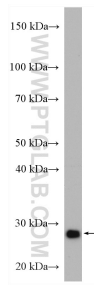
For technical support and original validation data for this product please contact:

T: 1 (888) 4PTGLAB (1-888-478-4522) (toll free in USA), or 1(312) 455-8498 (outside USA)

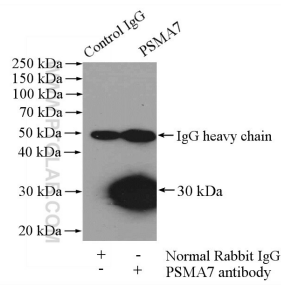
E: proteintech@ptglab.com  
W: ptglab.com

This product is exclusively available under Proteintech Group brand and is not available to purchase from any other manufacturer.

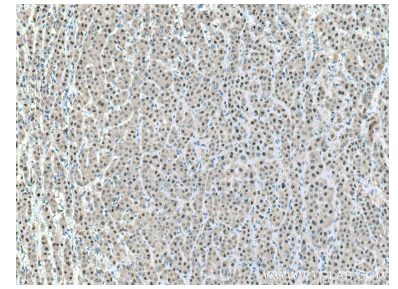
## Données de validation sélectionnées



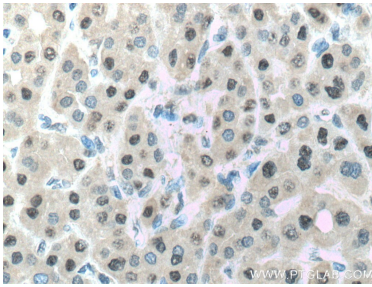
HepG2 cells were subjected to SDS PAGE followed by western blot with 15219-1-AP (PSMA7 antibody) at dilution of 1:8000 incubated at room temperature for 1.5 hours.



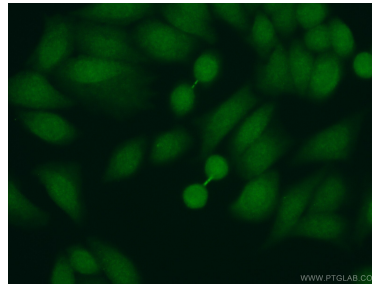
IP Result of anti-PSMA7 (IP:15219-1-AP, 4ug; Detection:15219-1-AP 1:500) with mouse brain tissue lysate 4000ug.



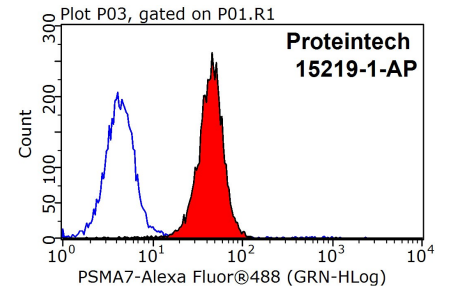
Immunohistochemical analysis of paraffin-embedded human liver cancer tissue slide using 15219-1-AP (PSMA7 antibody) at dilution of 1:1000 (under 10x lens. Heat mediated antigen retrieval with Tris-EDTA buffer (pH 9.0).



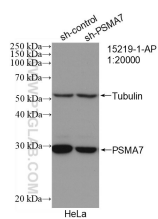
Immunohistochemical analysis of paraffin-embedded human liver cancer tissue slide using 15219-1-AP (PSMA7 antibody) at dilution of 1:1000 (under 40x lens. Heat mediated antigen retrieval with Tris-EDTA buffer (pH 9.0).



Immunofluorescent analysis of (10% Formaldehyde) fixed HeLa cells using 15219-1-AP (PSMA7 antibody) at dilution of 1:50 and Alexa Fluor 488-conjugated AffiniPure Goat Anti-Rabbit IgG(H+L).



1X10<sup>6</sup> HepG2 cells were stained with 0.2ug PSMA7 antibody (15219-1-AP, red) and control antibody (blue). Fixed with 90% MeOH blocked with 3% BSA (30 min). Alexa Fluor 488-conjugated AffiniPure Goat Anti-Rabbit IgG(H+L) with dilution 1:1500.



WB result of PSMA7 antibody (15219-1-AP; 1:20000; incubated at room temperature for 1.5 hours) with sh-Control and sh-PSMA7 transfected HeLa cells.