

À des fins de recherche uniquement

Anticorps Polyclonal de lapin anti-YWHAH



Numéro de catalogue: 15222-1-AP

Phare

4 Publications

Informations de base

Numéro de catalogue:

15222-1-AP

Taille:

150ul, Concentration: 350 µg/ml by Nanodrop and 200 µg/ml by Bradford method using BSA as the standard;

Hôte:

Lapin

Isotype:

IgG

Immunogen Catalog Number:

AG7435

Numéro d'acquisition GenBank:

BC003047

Identification du gène (NCBI):

7533

Nom complet:

tyrosine 3-monooxygenase/tryptophan 5-monooxygenase activation protein, eta polypeptide

MW calculé

28 kDa

MW observés:

28 kDa

Méthode de purification:

Purification par affinité contre l'antigène

Dilutions recommandées:

WB 1:500-1:2000

IP 0.5-4.0 ug for IP and 1:500-1:2000 for WB

IF 1:10-1:100

Applications

Applications testées:

IF, IP, WB, ELISA

Demandes citées:

IF, IP, WB

Spécificité de l'espèce:

Humain, rat, souris

Espèces citées:

Humain, rat, souris

Contrôles positifs:

WB : tissu cérébral humain, cellules A431, cellules NIH/3T3, cellules Raji, tissu cérébral de souris

IP : cellules NIH/3T3,

IF : cellules HeLa,

Informations générales

YWHAH (also known as 14-3-3 eta) is a member of 14-3-3 proteins which were the first phosphoserine/phosphothreonine-binding proteins to be discovered. 14-3-3 family members interact with a wide spectrum of proteins and possess diverse functions. Mammals express seven distinct 14-3-3 isoforms (gamma, epsilon, beta, zeta, sigma, theta, tau) that form multiple homo- and hetero- dimers. 14-3-3 proteins display the highest expression levels in the brain, and have been implicated in several neurodegenerative diseases, including Alzheimer's disease and amyotrophic lateral sclerosis. This antibody was raised against the full-length YWHAH.

Publications notables

| Autrice | Pubmed ID | Journal | Application |
|------------|-----------|-----------------------|-------------|
| Jiyi Huang | 29175072 | Eur J Pharmacol | WB |
| Jia Song | 30606233 | J Exp Clin Cancer Res | WB,IF,IP |
| Jiarui Liu | 33987186 | Front Cell Dev Biol | WB |

Stockage

Stockage:

Stocker à -20°C. Stable pendant un an après l'expédition.

Tampon de stockage:

PBS avec azoture de sodium à 0,02 % et glycérol à 50 % pH 7,3

L'aliquotage n'est pas nécessaire pour le stockage à -20C

*** Les 20ul contiennent 0,1% de BSA.

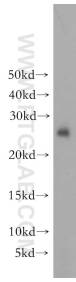
For technical support and original validation data for this product please contact:

T: 1 (888) 4PTGLAB (1-888-478-4522) (toll free in USA), or 1(312) 455-8498 (outside USA)

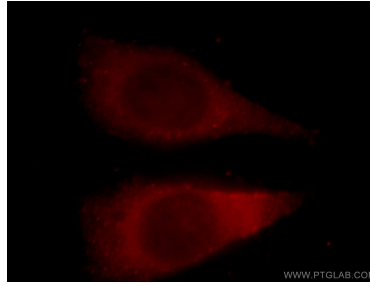
E: proteintech@ptglab.com
W: ptglab.com

This product is exclusively available under Proteintech Group brand and is not available to purchase from any other manufacturer.

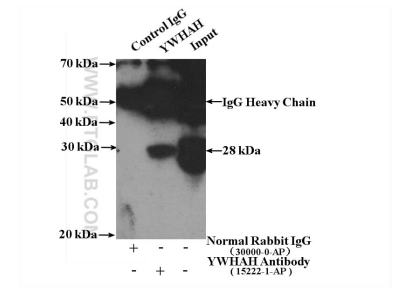
Données de validation sélectionnées



human brain tissue were subjected to SDS PAGE followed by western blot with 15222-1-AP (YWHAH antibody) at dilution of 1:300 incubated at room temperature for 1.5 hours.



Immunofluorescent analysis of HeLa cells, using YWHAH antibody 15222-1-AP at 1:25 dilution and Rhodamine-labeled goat anti-rabbit IgG (red).



IP Result of anti-YWHAH (IP:15222-1-AP, 4ug; Detection:15222-1-AP 1:1000) with NIH/3T3 cells lysate 1600ug.