

À des fins de recherche uniquement

Anticorps Polyclonal de lapin anti-NCK1



Numéro de catalogue: 15247-1-AP

Phare

4 Publications

Informations de base

Numéro de catalogue:

15247-1-AP

Taille:

150ul, Concentration: 400 µg/ml by Nanodrop and 213 µg/ml by Bradford method using BSA as the standard;

Hôte:

Lapin

Isotype:

IgG

Immunogen Catalog Number:

AG0979

Numéro d'acquisition GenBank:

BC006403

Identification du gène (NCBI):

4690

Nom complet:

NCK adaptor protein 1

MW calculé

43 kDa

MW observés:

43 kDa

Méthode de purification:

Purification par affinité contre l'antigène

Dilutions recommandées:

WB 1:500-1:2000

IP 0.5-4.0 ug for IP and 1:500-1:1000 for WB

IHC 1:50-1:500

IF 1:10-1:100

Applications

Applications testées:

FC, IF, IHC, IP, WB, ELISA

Demandes citées:

IHC, IP, WB

Spécificité de l'espèce:

Humain, rat, souris

Espèces citées:

Humain

Remarque-IHC: il est suggéré de démasquer l'antigène avec un tampon de TE buffer pH 9,0; (*) A défaut, 'le démasquage de l'antigène peut être 'effectué avec un tampon citrate pH 6,0.

Contrôles positifs:

WB : tissu cérébral de souris, tissu cérébral de rat, tissu hépatique de souris

IP : tissu cérébral de souris,

IHC : tissu de cancer du sein humain,

IF : cellules HeLa,

Informations générales

NCK family adaptor proteins function to couple tyrosine phosphorylation signals to regulate actin cytoskeletal reorganization that leads to cell motility. Cytoplasmic protein NCK1 (or NCK alpha) is an adapter protein which associates with tyrosine-phosphorylated growth factor receptors, such as KDR and PDGFRB, or their cellular substrates. NCK1 binds a number of intracellular proteins and influences various signaling pathways including GTPase-activating protein of Ras (RasGAP), which is responsible for the down-regulation of Ras. NCK1 is recently reported to regulate the UPR, which secondary to obesity impairs glucose homeostasis and INS actions.

Publications notables

Autrice	Pubmed ID	Journal	Application
Peina He	34846647	Mol Biol Rep	WB,IHC
Lei He	30702192	Cell Microbiol	WB
Fan Zhang	28455144	Cell Signal	WB

Stockage

Stockage:

Stocker à -20°C. Stable pendant un an après l'expédition.

Tampon de stockage:

PBS avec azoture de sodium à 0,02 % et glycérol à 50 % pH 7,3

L'aliquotage n'est pas nécessaire pour le stockage à -20C

*** Les 20ul contiennent 0,1% de BSA.

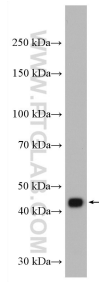
For technical support and original validation data for this product please contact:

T: 1 (888) 4PTGLAB (1-888-478-4522) (toll free in USA), or 1(312) 455-8498 (outside USA)

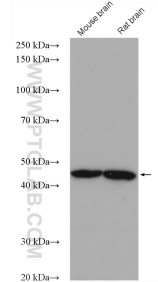
E: proteintech@ptglab.com
W: ptglab.com

This product is exclusively available under Proteintech Group brand and is not available to purchase from any other manufacturer.

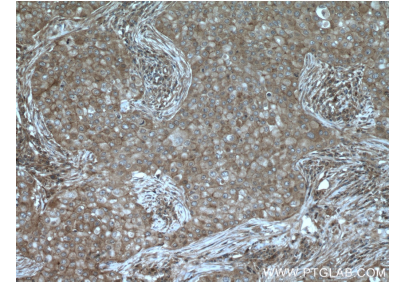
Données de validation sélectionnées



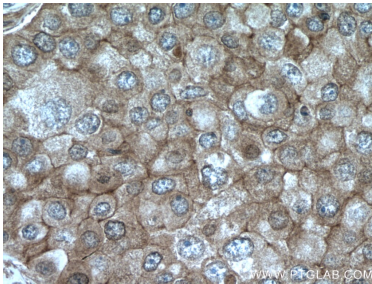
mouse brain tissue were subjected to SDS PAGE followed by western blot with 15247-1-AP (NCK1 antibody) at dilution of 1:1000 incubated at room temperature for 1.5 hours.



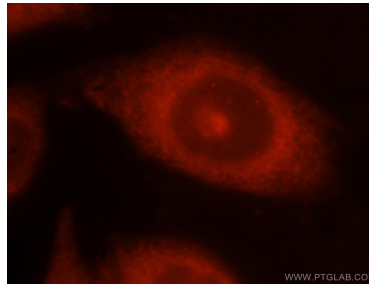
Various lysates were subjected to SDS PAGE followed by western blot with 15247-1-AP (NCK1 antibody) at dilution of 1:5000 incubated at room temperature for 1.5 hours.



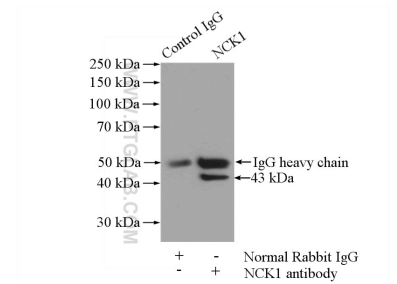
Immunohistochemical analysis of paraffin-embedded human breast cancer tissue slide using 15247-1-AP (NCK1 antibody) at dilution of 1:200 (under 10x lens. Heat mediated antigen retrieval with Tris-EDTA buffer (pH 9.0).



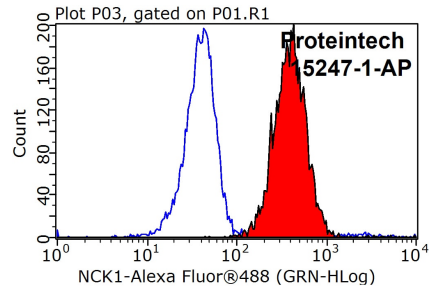
Immunohistochemical analysis of paraffin-embedded human breast cancer tissue slide using 15247-1-AP (NCK1 antibody) at dilution of 1:200 (under 40x lens. Heat mediated antigen retrieval with Tris-EDTA buffer (pH 9.0).



Immunofluorescent analysis of HeLa cells, using NCK1 antibody 15247-1-AP at 1:25 dilution and Rhodamine-labeled goat anti-rabbit IgG (red).



IP Result of anti-NCK1 (IP:15247-1-AP, 4ug; Detection:15247-1-AP 1:500) with mouse brain tissue lysate 2640ug.



1X10⁶ HeLa cells were stained with 0.2ug NCK1 antibody (15247-1-AP, red) and control antibody (blue). Fixed with 90% MeOH blocked with 3% BSA (30 min). Alexa Fluor 488-conjugated AffiniPure Goat Anti-Rabbit IgG(H+L) with dilution 1:1000.