

À des fins de recherche uniquement

# Anticorps Polyclonal de lapin anti-Elastin



Numéro de catalogue: 15257-1-AP

14 Publications

## Informations de base

Numéro de catalogue:

15257-1-AP

Taille:

150ul, Concentration: 333 µg/ml by Bradford method using BSA as the standard;

Hôte:

Lapin

Isotype:

IgG

Immunogen Catalog Number:

AG7179

Numéro d'acquisition GenBank:

BC065566

Identification du gène (NCBI):

2006

Nom complet:

elastin

MW calculé

68 kDa

MW observés:

60-70 kDa

Méthode de purification:

Purification par affinité contre l'antigène

Dilutions recommandées:

WB 1:1000-1:5000

IP 0.5-4.0 µg for IP and 1:200-1:1000 for WB

IHC 1:500-1:2000

## Applications

Applications testées:

IHC, IP, WB, ELISA

Demandes citées:

IF, IHC, WB

Spécificité de l'espèce:

Humain

Espèces citées:

Humain

**Remarque-IHC: il est suggéré de démasquer l'antigène avec un tampon de TE buffer pH 9,0; (\*) À défaut, le démasquage de l'antigène peut être effectué avec un tampon citrate pH 6,0.**

Contrôles positifs:

WB : tissu artériel humain,

IP : tissu placentaire humain,

IHC : tissu pulmonaire humain, tissu de cancer de la peau humain

## Informations générales

Elastic fibers are an abundant and integral part of many extracellular matrices, in which they provide the elastic properties to tissues such as arterial, lung, and skin. Elastic fibers are consisting of an elastin core surrounded by a mantle of fibrillin-rich microfibrils (PMID: 12082143). Elastin is an extremely durable, insoluble biopolymer formed through the lysine-mediated crosslinking of its soluble precursor tropoelastin, which is an approximately 60-70 kDa protein (PMID: 15837523). Deletions and mutations in the elastin gene (ELN) are associated with supravalvular aortic stenosis (SVAS) and autosomal dominant cutis laxa.

## Publications notables

Autrice	Pubmed ID	Journal	Application
Yuqi Li	36132982	J Immunol Res	IHC
Avinash Soundararajan	34831087	Cells	WB
Jing Ge	29019707	Am J Respir Cell Mol Biol	WB

## Stockage

Stockage:

Stocker à -20°C. Stable pendant un an après l'expédition.

Tampon de stockage:

PBS avec azoture de sodium à 0,02 % et glycérol à 50 % pH 7,3

L'aliquotage n'est pas nécessaire pour le stockage à -20C

\*\*\* Les 20ul contiennent 0,1% de BSA.

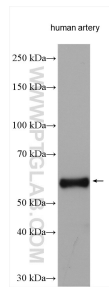
For technical support and original validation data for this product please contact:

T: 1 (888) 4PTGLAB (1-888-478-4522) (toll free in USA), or 1(312) 455-8498 (outside USA)

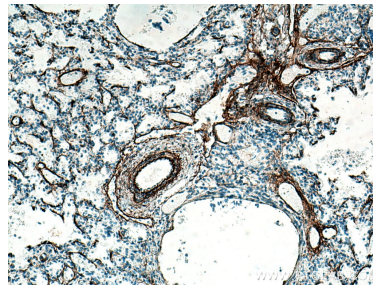
E: proteintech@ptglab.com  
W: ptglab.com

This product is exclusively available under Proteintech Group brand and is not available to purchase from any other manufacturer.

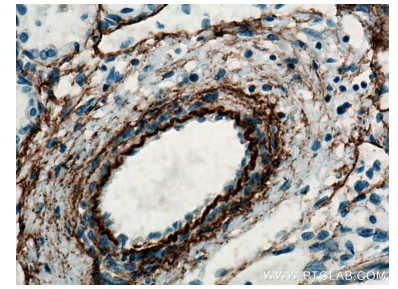
## Données de validation sélectionnées



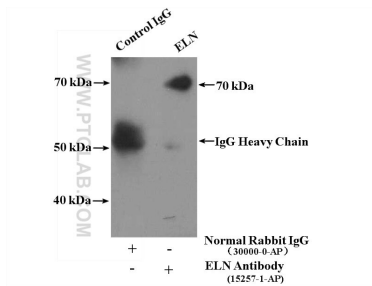
Human artery tissue were subjected to SDS PAGE followed by western blot with 15257-1-AP (Elastin antibody) at dilution of 1:5000 incubated at room temperature for 1.5 hours.



Immunohistochemical analysis of paraffin-embedded human lung tissue slide using 15257-1-AP (Elastin antibody) at dilution of 1:1000 (under 10x lens). Heat mediated antigen retrieval with Tris-EDTA buffer (pH 9.0).



Immunohistochemical analysis of paraffin-embedded human lung tissue slide using 15257-1-AP (Elastin antibody) at dilution of 1:1000 (under 40x lens). Heat mediated antigen retrieval with Tris-EDTA buffer (pH 9.0).



IP result of anti-Elastin (IP:15257-1-AP, 4ug; Detection:15257-1-AP 1:300) with human placenta tissue lysate 4000 ug.