

À des fins de recherche uniquement

Anticorps Polyclonal de lapin anti-S6K2



Numéro de catalogue: 15268-1-AP

1 Publications

Informations de base

Numéro de catalogue:

15268-1-AP

Taille:

150ul, Concentration: 200 µg/ml by Nanodrop and 187 µg/ml by Bradford method using BSA as the standard;

Hôte:

Lapin

Isotype:

IgG

Immunogen Catalog Number:

AG7371

Numéro d'acquisition GenBank:

BC000094

Identification du gène (NCBI):

6199

Nom complet:

ribosomal protein S6 kinase, 70kDa, polypeptide 2

MW calculé

53 kDa

MW observés:

54 kDa

Méthode de purification:

Purification par affinité contre l'antigène

Dilutions recommandées:

WB 1:500-1:3000

IP 0.5-4.0 ug for IP and 1:500-1:2000 for WB

IHC 1:50-1:500

IF 1:50-1:500

Applications

Applications testées:

IF, IHC, IP, WB, ELISA

Demandes citées:

WB

Spécificité de l'espèce:

Humain, rat, souris

Espèces citées:

Humain

Remarque-IHC: il est suggéré de démasquer l'antigène avec un tampon de TE buffer pH 9,0; (*) A défaut, le démasquage de l'antigène peut être effectué avec un tampon citrate pH 6,0.

Contrôles positifs:

WB : cellules MCF7, cellules MCF-7

IP : cellules MCF-7,

IHC : tissu rénal humain,

IF : cellules MCF-7,

Informations générales

RPS6KB2(ribosomal protein S6 kinase beta-2) is also named as 70 kDa ribosomal protein S6 kinase 2(P70S6K2), Serine/threonine-protein kinase 14B(STK14B) and belongs to the protein kinase superfamily. It is activated by mitogenic stimuli, including growth factors, cytokines, and phorbol esters. The activated enzyme phosphorylates several serine residues in the C terminus of ribosomal protein S6(PMID:9878560).

Publications notables

Autrice

Pubmed ID

Journal

Application

Eunus S Ali

35772404

Mol Cell

WB

Stockage

Stockage:

Stocker à -20°C. Stable pendant un an après l'expédition.

Tampon de stockage:

PBS avec azoture de sodium à 0,02 % et glycérol à 50 % pH 7,3

L'aliquotage n'est pas nécessaire pour le stockage à -20C

*** Les 20ul contiennent 0,1% de BSA.

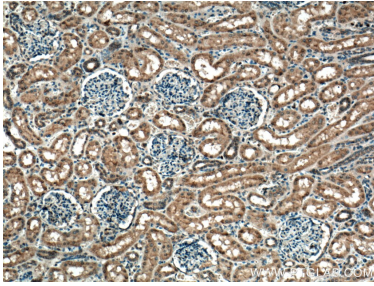
For technical support and original validation data for this product please contact:

T: 1 (888) 4PTGLAB (1-888-478-4522) (toll free in USA), or 1(312) 455-8498 (outside USA)

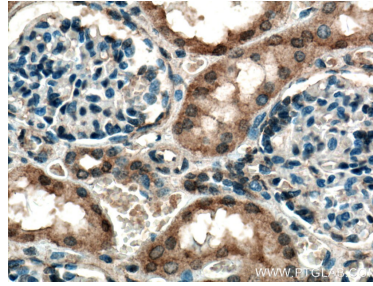
E: proteintech@ptglab.com
W: ptglab.com

This product is exclusively available under Proteintech Group brand and is not available to purchase from any other manufacturer.

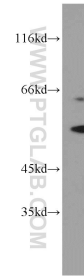
Données de validation sélectionnées



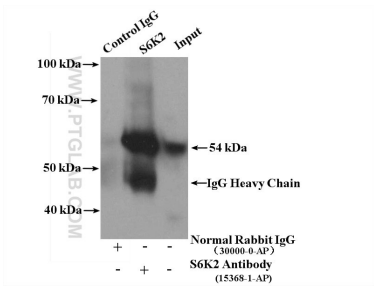
Immunohistochemical analysis of paraffin-embedded human kidney tissue slide using 15268-1-AP (S6K2 antibody) at dilution of 1:200 (under 10x lens). Heat mediated antigen retrieval with Tris-EDTA buffer (pH 9.0).



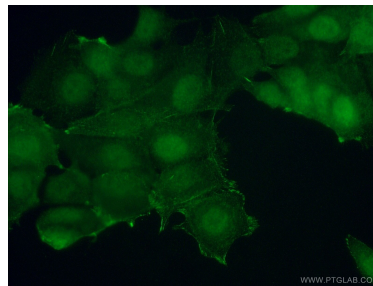
Immunohistochemical analysis of paraffin-embedded human kidney tissue slide using 15268-1-AP (S6K2 antibody) at dilution of 1:200 (under 40x lens). Heat mediated antigen retrieval with Tris-EDTA buffer (pH 9.0).



MCF7 cells were subjected to SDS PAGE followed by western blot with 15268-1-AP (S6K2 antibody) at dilution of 1:1500 incubated at room temperature for 1.5 hours.



IP Result of anti-S6K2 (IP:15268-1-AP, 4ug; Detection:15268-1-AP 1:1000) with MCF-7 cells lysate 2800ug.



Immunofluorescent analysis of (10% Formaldehyde) fixed MCF-7 cells using 15268-1-AP (S6K2 antibody) at dilution of 1:50 and Alexa Fluor 488-conjugated AffiniPure Goat Anti-Rabbit IgG(H+L).