

À des fins de recherche uniquement

Anticorps Polyclonal de lapin anti-SPARC



Numéro de catalogue: 15274-1-AP

Phare

37 Publications

Informations de base

Numéro de catalogue: 15274-1-AP	Numéro d'acquisition GenBank: BC004974	Méthode de purification: Purification par affinité contre l'antigène
Taille: 150ul, Concentration: 400 µg/ml by Nanodrop;	Identification du gène (NCBI): 6678	Dilutions recommandées: WB 1:500-1:1000 IHC 1:1000-1:4000
Hôte: Lapin	Nom complet: secreted protein, acidic, cysteine-rich (osteonectin)	
Isotype: IgG	MW calculé: 35 kDa	
Immunogen Catalog Number: AG7390	MW observés: 43 kDa	

Applications

Applications testées:

IHC, WB, ELISA

Demandes citées:

CoIP, IF, IHC, WB

Spécificité de l'espèce:

Humain, porc, rat, souris

Espèces citées:

Humain, rat, souris, cerf Sika

Contrôles positifs:

WB : cellules ROS1728, cellules A375, tissu placentaire humain, tissu testiculaire humain

IHC : tissu de cancer de l'estomac humain,

Remarque-IHC: il est suggéré de démasquer l'antigène avec un tampon de TE buffer pH 9,0; (*) À défaut, le démasquage de l'antigène peut être effectué avec un tampon citrate pH 6,0.

Informations générales

SPARC, also known as ON (Osteonectin) or BM-40 (Basement-membrane protein 40), is an extracellular glycoprotein with the calculated molecular mass of 35 kDa and the apparent molecular mass of 40-43 kDa and 50 kDa (PMID: 7495300, 12365801). SPARC belongs to a group of matricellular proteins defined as secreted components that do not contribute directly to the formation of structural elements but serve to modulate cell-matrix interactions and cellular functions (PMID: 7542656; 12231357). SPARC is expressed at high levels in bone tissue, is distributed widely in many other tissues and cell types, and is associated generally with tissues undergoing morphogenesis, remodeling and wound repair (PMID: 10567433). It elicits changes in cell shape, inhibits cell-cycle progression, and influences the synthesis of extracellular matrix (PMID: 12721366). Altered expression of SPARC has been reported in a variety of cancers, which include breast, ovarian, colorectal, and pancreatic cancer as well as melanoma and glioblastomas (PMID: 18849185).

Publications notables

Autrice	Pubmed ID	Journal	Application
Qingchun Cai	29048685	Oncol Rep	WB
Qifeng Lin	26359947	Proteomics	WB
Da-Yuan Chen	33140044	bioRxiv	WB

Stockage

Stockage:

Stocker à -20°C. Stable pendant un an après l'expédition.

Tampon de stockage:

PBS avec azoture de sodium à 0,02 % et glycérol à 50 % pH 7,3

L'aliquotage n'est pas nécessaire pour le stockage à -20C

*** Les 20ul contiennent 0,1% de BSA.

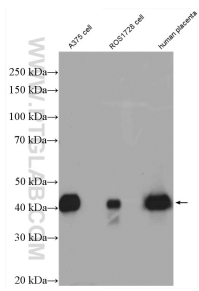
For technical support and original validation data for this product please contact:

T: 1 (888) 4PTGLAB (1-888-478-4522) (toll free in USA), or 1(312) 455-8498 (outside USA)

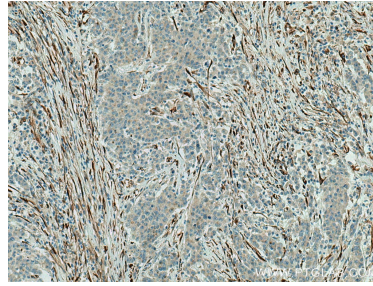
E: proteintech@ptglab.com
W: ptglab.com

This product is exclusively available under Proteintech Group brand and is not available to purchase from any other manufacturer.

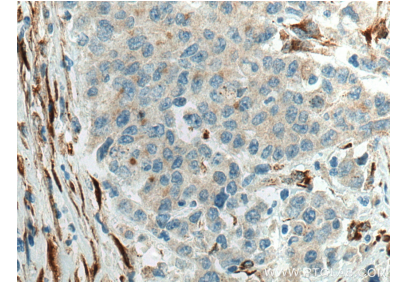
Données de validation sélectionnées



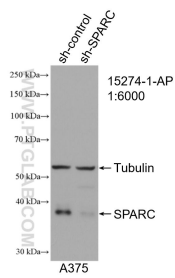
A375 cells, ROS1728 cells, and human placenta tissue were subjected to SDS PAGE followed by western blot with 15274-1-AP (SPARC antibody) at dilution of 1:600 incubated at room temperature for 1.5 hours.



Immunohistochemical analysis of paraffin-embedded human stomach cancer tissue slide using 15274-1-AP (SPARC antibody) at dilution of 1:2000 (under 10x lens). Heat mediated antigen retrieval with Tris-EDTA buffer (pH 9.0).



Immunohistochemical analysis of paraffin-embedded human stomach cancer tissue slide using 15274-1-AP (SPARC antibody) at dilution of 1:2000 (under 40x lens). Heat mediated antigen retrieval with Tris-EDTA buffer (pH 9.0).



WB result of SPARC antibody (15274-1-AP; 1:4000; incubated at room temperature for 1.5 hours) with sh-Control and sh-SPARC transfected A375 cells.