

À des fins de recherche uniquement

Anticorps Polyclonal de lapin anti-MRPS25



Numéro de catalogue: 15277-1-AP

Phare

4 Publications

Informations de base

Numéro de catalogue:
15277-1-AP

Taille:
150ul, Concentration: 500 µg/ml by
Nanodrop and 333 µg/ml by Bradford
method using BSA as the standard;

Hôte:
Lapin

Isotype:
IgG

Immunogen Catalog Number:
AG7395

Numéro d'acquisition GenBank:
BC003590

Identification du gène (NCBI):
64432

Nom complet:
mitochondrial ribosomal protein S25

MW calculé
20 kDa

MW observés:
20 kDa

Méthode de purification:
Purification par affinité contre
l'antigène

Dilutions recommandées:
WB 1:500-1:2000
IP 0.5-4.0 ug for IP and 1:500-1:1000
for WB

Applications

Applications testées:
IP, WB, ELISA

Demandes citées:
WB

Spécificité de l'espèce:
Humain, rat, souris

Espèces citées:
Humain, souris

Contrôles positifs:

WB : cellules HEK-293, cellules HepG2

IP : cellules HEK-293,

Informations générales

Mitochondrial ribosomal protein S25 (MRPS25) belongs to the ribosomal protein S25/L51 family. It is a component of the mitochondrial ribosome small subunit (28S). The variant segregated with the disease and substitutes a highly conserved proline residue with leucine (p.P72L) that, based on the high-resolution structure of the 28S ribosome, is predicted to compromise inter-protein contacts and destabilize the small subunit.

Publications notables

Autrice	Pubmed ID	Journal	Application
Benedetta Ruzzenente	33606205	Methods Mol Biol	WB
Tara R Richman	25816300	PLoS Genet	WB
Serre Valérie V	23603806	Biochim Biophys Acta	WB

Stockage

Stockage:

Stocker à -20°C. Stable pendant un an après l'expédition.

Tampon de stockage:

PBS avec azoture de sodium à 0,02 % et glycérol à 50 % pH 7,3

L'aliquotage n'est pas nécessaire pour le stockage à -20C

*** Les 20ul contiennent 0,1% de BSA.

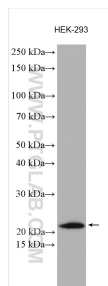
For technical support and original validation data for this product please contact:

T: 1 (888) 4PTGLAB (1-888-478-4522) (toll free
in USA), or 1(312) 455-8498 (outside USA)

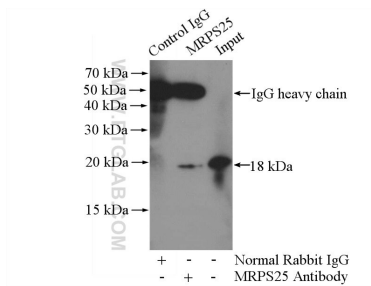
E: proteintech@ptglab.com
W: ptglab.com

This product is exclusively available under Proteintech Group brand and is not available to purchase from any other manufacturer.

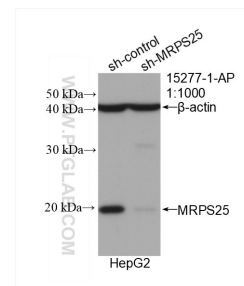
Données de validation sélectionnées



HEK-293 cells were subjected to SDS PAGE followed by western blot with 15277-1-AP (MRPS25 antibody) at dilution of 1:1000 incubated at room temperature for 1.5 hours.



IP Result of anti-MRPS25 (IP:15277-1-AP, 4 μ g; Detection:15277-1-AP 1:500) with HEK-293 cells lysate 1600 μ g.



WB result of MRPS25 antibody (15277-1-AP; 1:1000; incubated at room temperature for 1.5 hours) with sh-Control and sh-MRPS25 transfected HepG2 cells.