

À des fins de recherche uniquement

Anticorps Polyclonal de lapin anti-ARF5



Numéro de catalogue: 15281-1-AP

1 Publications

Informations de base

Numéro de catalogue:

15281-1-AP

Taille:

150ul, Concentration: 140 µg/ml by Nanodrop and 140 µg/ml by Bradford method using BSA as the standard;

Hôte:

Lapin

Isotype:

IgG

Immunogen Catalog Number:

AG7400

Numéro d'acquisition GenBank:

BC003043

Identification du gène (NCBI):

381

Nom complet:

ADP-ribosylation factor 5

MW calculé

21 kDa

MW observés:

21 kDa

Méthode de purification:

Purification par affinité contre l'antigène

Dilutions recommandées:

WB 1:500-1:1000

IP 0.5-4.0 ug for IP and 1:500-1:1000 for WB

IHC 1:50-1:500

IF 1:50-1:500

Applications

Applications testées:

IF, IHC, IP, WB, ELISA

Demandes citées:

WB

Spécificité de l'espèce:

Humain, rat, souris

Espèces citées:

Humain

Remarque-IHC: il est suggéré de démasquer l'antigène avec un tampon de TE buffer pH 9,0; (*) A défaut, 'le démasquage de l'antigène peut être 'effectué avec un tampon citrate pH 6,0.

Contrôles positifs:

WB : cellules MCF-7, cellules HeLa, cellules PC-12, cellules Raji, tissu cérébral de souris, tissu hépatique humain

IP : cellules MCF-7,

IHC : tissu de cancer du sein humain,

IF : cellules HeLa,

Informations générales

ADP-ribosylation factors (ARFs) are members of the ARF family of GTP-binding proteins of the Ras superfamily. ARFs bind and regulate GTP/GDP cycle by alternating between the active GTP-bound and inactive GDP-bound conformations. ARF family proteins are essential and ubiquitous in eukaryotes. Six highly conserved members of the family have been identified in mammalian cells. They function in vesicular traffic and actin remodelling and other bioprocesses in cells. ARF4 and ARF5 are class II ARFs. (PMID: 7759471, PMID: 16042562). This antibody can bind ARFs for the close sequences.

Publications notables

Autrice	Pubmed ID	Journal	Application
Feifeng Song	37458957	J Physiol Biochem	WB

Stockage

Stockage:

Stocker à -20°C. Stable pendant un an après l'expédition.

Tampon de stockage:

PBS avec azoture de sodium à 0,02 % et glycérol à 50 % pH 7,3

L'aliquotage n'est pas nécessaire pour le stockage à -20C

*** Les 20ul contiennent 0,1% de BSA.

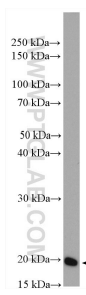
For technical support and original validation data for this product please contact:

T: 1 (888) 4PTGLAB (1-888-478-4522) (toll free in USA), or 1(312) 455-8498 (outside USA)

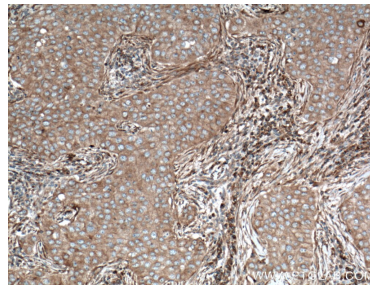
E: proteintech@ptglab.com
W: ptglab.com

This product is exclusively available under Proteintech Group brand and is not available to purchase from any other manufacturer.

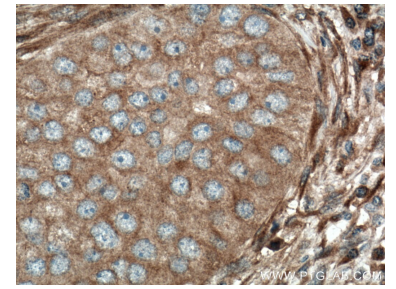
Données de validation sélectionnées



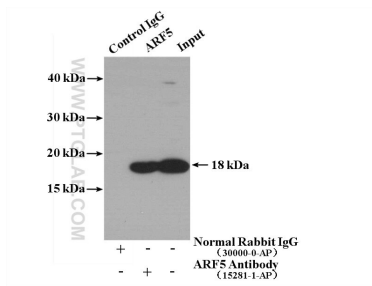
MCF-7 cells were subjected to SDS PAGE followed by western blot with 15281-1-AP (ARF5 antibody) at dilution of 1:600 incubated at room temperature for 1.5 hours.



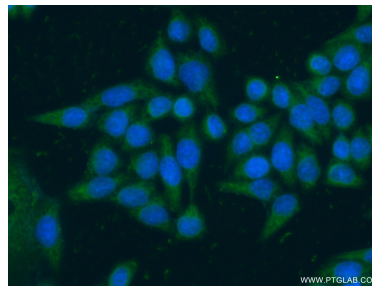
Immunohistochemical analysis of paraffin-embedded human breast cancer tissue slide using 15281-1-AP (ARF5 antibody) at dilution of 1:200 (under 10x lens. Heat mediated antigen retrieval with Tris-EDTA buffer (pH 9.0).



Immunohistochemical analysis of paraffin-embedded human breast cancer tissue slide using 15281-1-AP (ARF5 antibody) at dilution of 1:200 (under 40x lens. Heat mediated antigen retrieval with Tris-EDTA buffer (pH 9.0).



IP result of anti-ARF5 (IP:15281-1-AP, 4ug; Detection:15281-1-AP 1:500) with MCF-7 cells lysate 2840 ug.



Immunofluorescent analysis of (-20°C Ethanol) fixed HeLa cells using 15281-1-AP (ARF5 antibody) at dilution of 1:50 and Alexa Fluor 488-conjugated AffiniPure Goat Anti-Rabbit IgG(H+L).