

À des fins de recherche uniquement

Anticorps Polyclonal de lapin anti-HSP60



Numéro de catalogue: 15282-1-AP

Phare

97 Publications

Informations de base

Numéro de catalogue:

15282-1-AP

Numéro d'acquisition GenBank:

BC003030

Méthode de purification:

Purification par affinité contre l'antigène

Taille:

150ul, Concentration: 1000 µg/ml by Nanodrop;

Identification du gène (NCBI):

3329

Dilutions recommandées:

WB 1:2000-1:16000

Hôte:

Lapin

Nom complet: heat shock 60kDa protein 1 (chaperonin)

IP 0.5-4.0 ug for IP and 1:5000-1:50000 for WB

Isotype:

IgG

MW calculé

61 kDa

IHC 1:50-1:500

IF 1:50-1:500

Immunogen Catalog Number:

AG7401

MW observés:

60 kDa

Applications

Applications testées:

FC, IF, IHC, IP, WB, ELISA

Demandes citées:

CoIP, ELISA, IF, IHC, IP, WB

Spécificité de l'espèce:

Humain, rat, souris

Espèces citées:

bovin, Humain, porc, poulet, rat, riz, souris, fish

Remarque-IHC: il est suggéré de démasquer l'antigène avec un tampon de TE buffer pH 9,0; (*) À défaut, le démasquage de l'antigène peut être effectué avec un tampon citrate pH 6,0.

Contrôles positifs:

WB : cellules HEK-293, cellules HepG2, cellules NIH/3T3, cœur de rat, cœur de souris, HeLa

IP : cellules HEK-293,

IHC : tissu de cancer du poumon humain,

IF : cellules HeLa,

Informations générales

HSPD1, also known as HSP60, belongs to the chaperonin family and acts as a chaperone to enhance cell survival under physiological stresses. Hsp60 has been shown to be connected with many aspects of cell functions such as protein folding and assembling of polypeptide chains in mitochondria. Recently it has been reported that HSP60 is associated with apoptosis or inhibition of cancer cell growth. (21822415)

Publications notables

Autrice	Pubmed ID	Journal	Application
Beiwu Lan	36116558	Exp Cell Res	WB
Jianli Tang	36106732	mBio	WB,IF,IP
Panayotis Pachnis	36044570	Sci Adv	WB

Stockage

Stockage:

Stocker à -20°C. Stable pendant un an après l'expédition.

Tampon de stockage:

PBS avec azoture de sodium à 0,02 % et glycérol à 50 % pH 7,3

L'aliquotage n'est pas nécessaire pour le stockage à -20C

*** Les 20ul contiennent 0,1% de BSA.

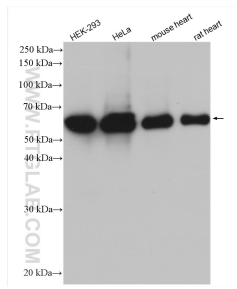
For technical support and original validation data for this product please contact:

T: 1 (888) 4PTGLAB (1-888-478-4522) (toll free in USA), or 1(312) 455-8498 (outside USA)

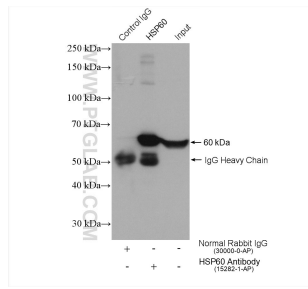
E: proteintech@ptglab.com
W: ptglab.com

This product is exclusively available under Proteintech Group brand and is not available to purchase from any other manufacturer.

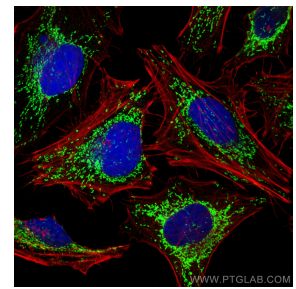
Données de validation sélectionnées



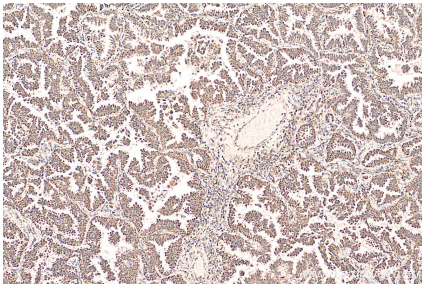
Various lysates were subjected to SDS PAGE followed by western blot with 15282-1-AP (HSP60 antibody) at dilution of 1:8000 incubated at room temperature for 1.5 hours.



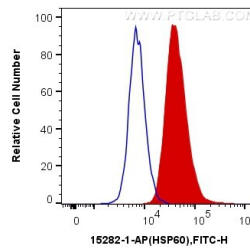
IP result of anti-HSP60(IP:15282-1-AP, 4ug; Detection:15282-1-AP 1:10000) with HEK-293 cells lysate 1800 ug.



Immunofluorescent analysis of (4% PFA) fixed HeLa cells using HSP60 antibody (15282-1-AP) at dilution of 1:200 and CoraLite®488-Conjugated AffiniPure Goat Anti-Rabbit IgG(H+L), (CL594-Phalloidin, red).



Immunohistochemical analysis of paraffin-embedded human lung cancer tissue slide using 15282-1-AP (HSP60 antibody) at dilution of 1:200 (under 10x lens). Heat mediated antigen retrieval with Tris-EDTA buffer (pH 9.0).



1X10⁶ HepG2 cells were intracellularly stained with 0.4 ug Anti-Human HSP60 (15282-1-AP) and CoraLite®488-Conjugated AffiniPure Goat Anti-Rabbit IgG(H+L) at dilution 1:1000 (red), or 0.4 ug x. Cells were fixed with 4% PFA and permeabilized with Flow Cytometry Perm Buffer (PF00011-C).