

À des fins de recherche uniquement

Anticorps Polyclonal de lapin anti-TXNL1



Numéro de catalogue: 15289-1-AP

3 Publications

Informations de base

Numéro de catalogue:

15289-1-AP

Taille:

150ul, Concentration: 550 µg/ml by Nanodrop and 420 µg/ml by Bradford method using BSA as the standard;

Hôte:

Lapin

Isotype:

IgG

Immunogen Catalog Number:

AG7481

Numéro d'acquisition GenBank:

BC001156

Identification du gène (NCBI):

9352

Nom complet:

thioredoxin-like 1

MW calculé

32 kDa

MW observés:

32 kDa

Méthode de purification:

Purification par affinité contre l'antigène

Dilutions recommandées:

WB 1:500-1:2000

IP 0.5-4.0 ug for IP and 1:200-1:1000 for WB

IHC 1:100-1:400

IF 1:50-1:500

Applications

Applications testées:

IF, IHC, IP, WB, ELISA

Demandes citées:

IHC, WB

Spécificité de l'espèce:

Humain, rat, souris

Espèces citées:

Humain

Remarque-IHC: il est suggéré de démasquer l'antigène avec un tampon de TE buffer pH 9,0; (*) À défaut, 'le démasquage de l'antigène peut être 'effectué avec un tampon citrate pH 6,0.

Contrôles positifs:

WB : cellules K-562, cellules HL-60

IP : cellules HL-60,

IHC : tissu cardiaque humain, tissu de cancer de la thyroïde humain

IF : cellules RAW 264.7,

Informations générales

TXNL1 (Thioredoxin-like protein 1) is also named as TRP32, TXL, TXNL and belongs to the thioredoxin family. It might be involved in the cellular response to sugar starvation stress. The predicted 289-amino acid, 32.3-kD protein has 2 distinct domains: an N-terminal domain, which is 43% identical to human TXN, and a C-terminal domain, which showed no homology to other proteins in the sequence databases (PMID:9473519). TXNL1 functions as an effector of oxidants or redox sensor that couples oxidative stress to endocytosis, by converting redox changes into a specific GDI:Rab5-mediated endocytic response (PMID:17987124).

Publications notables

Autrice	Pubmed ID	Journal	Application
Caiying Wang	30290847	Vet Res	WB
Pan Ni	25348020	Curr Cancer Drug Targets	WB
W Xu	24525731	Cell Death Dis	WB, IHC

Stockage

Stockage:

Stocker à -20°C. Stable pendant un an après l'expédition.

Tampon de stockage:

PBS avec azoture de sodium à 0,02 % et glycérol à 50 % pH 7,3

L'aliquotage n'est pas nécessaire pour le stockage à -20C

*** Les 20ul contiennent 0,1% de BSA.

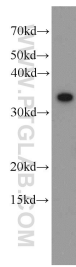
For technical support and original validation data for this product please contact:

T: 1 (888) 4PTGLAB (1-888-478-4522) (toll free in USA), or 1(312) 455-8498 (outside USA)

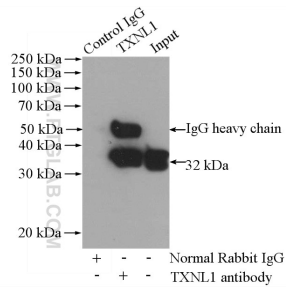
E: proteintech@ptglab.com
W: ptglab.com

This product is exclusively available under Proteintech Group brand and is not available to purchase from any other manufacturer.

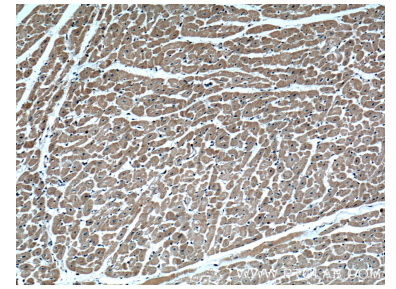
Données de validation sélectionnées



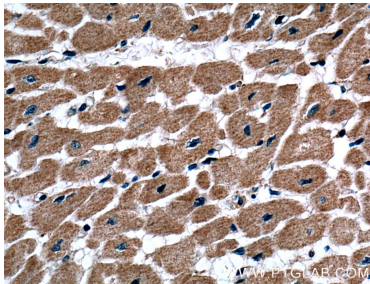
K-562 cells were subjected to SDS PAGE followed by western blot with 15289-1-AP (TXNL1 antibody) at dilution of 1:1000 incubated at room temperature for 1.5 hours.



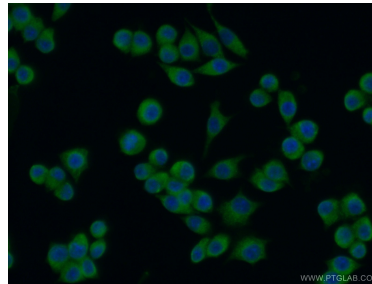
IP Result of anti-TXNL1 (IP:15289-1-AP, 4 μ g; Detection:15289-1-AP 1:300) with HL-60 cells lysate 960 μ g.



Immunohistochemical analysis of paraffin-embedded human heart tissue slide using 15289-1-AP (TXNL1 Antibody) at dilution of 1:200 (under 10x lens).



Immunohistochemical analysis of paraffin-embedded human heart tissue slide using 15289-1-AP (TXNL1 Antibody) at dilution of 1:200 (under 40x lens).



Immunofluorescent analysis of (4% PFA) fixed RAW 264.7 cells using 15289-1-AP (TXNL1 antibody) at dilution of 1:50 and Alexa Fluor 488-conjugated AffiniPure Goat Anti-Rabbit IgG(H+L).