

À des fins de recherche uniquement

# Anticorps Polyclonal de lapin anti-ARFGAP3



Numéro de catalogue: 15293-1-AP

Phare

3 Publications

## Informations de base

Numéro de catalogue:

15293-1-AP

Taille:

150ul, Concentration: 750 µg/ml by Nanodrop and 333 µg/ml by Bradford method using BSA as the standard;

Hôte:

Lapin

Isotype:

IgG

Immunogen Catalog Number:

AG7536

Numéro d'acquisition GenBank:

BC005122

Identification du gène (NCBI):

26286

Nom complet:

ADP-ribosylation factor GTPase activating protein 3

MW calculé

57 kDa

MW observés:

57-66 kDa

Méthode de purification:

Purification par affinité contre l'antigène

Dilutions recommandées:

WB 1:1000-1:4000

IP 0.5-4.0 ug for IP and 1:1000-1:4000 for WB

IHC 1:20-1:200

IF 1:10-1:100

## Applications

Applications testées:

IF, IHC, IP, WB, ELISA

Demandes citées:

IF, WB

Spécificité de l'espèce:

Humain, rat, souris

Espèces citées:

Humain, souris

**Remarque-IHC: il est suggéré de démasquer l'antigène avec un tampon de TE buffer pH 9,0; (\*) A défaut, 'le démasquage de l'antigène peut être effectué avec un tampon citrate pH 6,0.**

Contrôles positifs:

WB : cellules HepG2, cellules Jurkat, tissu cérébral de souris

IP : cellules HepG2,

IHC : tissu de cancer du sein humain,

IF : cellules A431, cellules HepG2

## Informations générales

ARFGAP3, also named as ADP-ribosylation factor GTPase-activating protein 3, is a 516 amino acid protein, which is widely expressed with highest expression in endocrine glands (pancreas, pituitary gland, salivary gland, and prostate). ARFGAP3 is a GTPase-activating protein (GAP) for ADP ribosylation factor 1 (ARF1). Hydrolysis of ARF1-bound GTP may lead to dissociation of coatamer from Golgi-derived membranes to allow fusion with target membranes. The calculated molecular weight of ARFGAP3 is 57 kDa, but modified ARFGAP3 is about 57-66 kDa.

## Publications notables

Autrice	Pubmed ID	Journal	Application
Xihua Yue	34493279	BMC Biol	WB
Xihua Yue	34876695	Commun Biol	WB
Suting Li	36476390	Cell Signal	IF

## Stockage

Stockage:

Stocker à -20°C. Stable pendant un an après l'expédition.

Tampon de stockage:

PBS avec azoture de sodium à 0,02 % et glycérol à 50 % pH 7,3

L'aliquotage n'est pas nécessaire pour le stockage à -20C

\*\*\* Les 20ul contiennent 0,1% de BSA.

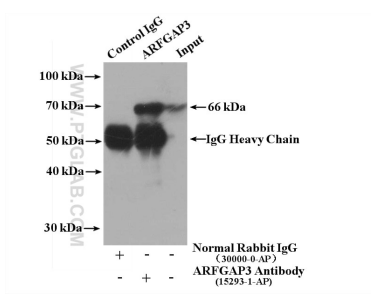
For technical support and original validation data for this product please contact:

T: 1 (888) 4PTGLAB (1-888-478-4522) (toll free in USA), or 1(312) 455-8498 (outside USA)

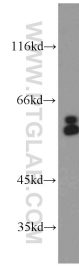
E: proteintech@ptglab.com  
W: ptglab.com

This product is exclusively available under Proteintech Group brand and is not available to purchase from any other manufacturer.

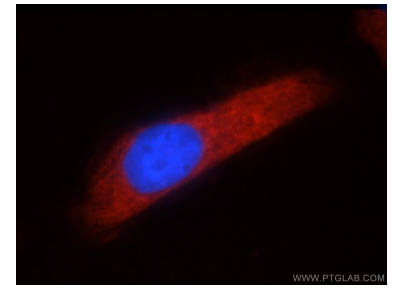
## Données de validation sélectionnées



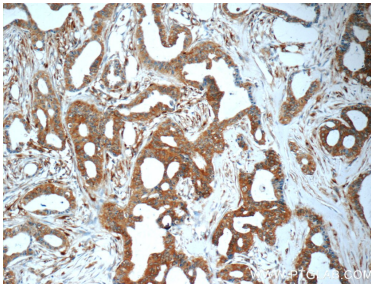
IP result of anti-ARFGAP3 (IP:15293-1-AP, 4ug; Detection:15293-1-AP 1:2000) with HepG2 cells lysate 3000 ug.



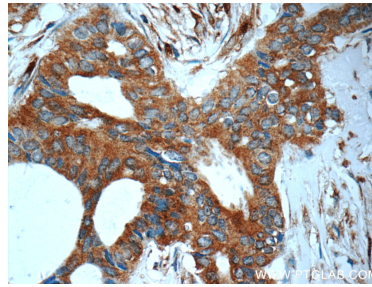
HepG2 cells were subjected to SDS PAGE followed by western blot with 15293-1-AP (ARFGAP3 antibody) at dilution of 1:2000 incubated at room temperature for 1.5 hours.



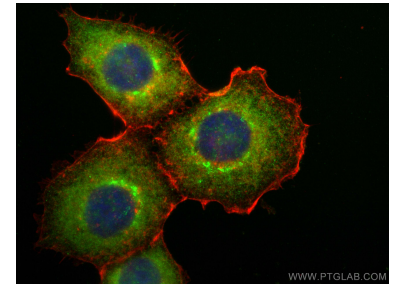
Immunofluorescent analysis of A431 cells using 15293-1-AP (ARFGAP3 antibody) at dilution of 1:25 and Rhodamine-Goat anti-Rabbit IgG.



Immunohistochemical analysis of paraffin-embedded human breast cancer tissue slide using 15293-1-AP (ARFGAP3 Antibody) at dilution of 1:50 (under 10x lens).



Immunohistochemical analysis of paraffin-embedded human breast cancer tissue slide using 15293-1-AP (ARFGAP3 Antibody) at dilution of 1:50 (under 40x lens).



Immunofluorescent analysis of (-20°C Methanol) fixed A431 cells using ARFGAP3 antibody (15293-1-AP) at dilution of 1:400 and CoraLite@488-Conjugated AffiniPure Goat Anti-Rabbit IgG(H+L), CoraLite@594 Beta Actin antibody (CL594-66009, Clone: 2D4H5, red).