

À des fins de recherche uniquement

Anticorps Polyclonal de lapin anti-ADRP/Perilipin 2



Numéro de catalogue: 15294-1-AP

Phare

95 Publications

Informations de base

Numéro de catalogue:

15294-1-AP

Numéro d'acquisition GenBank:

BC005127

Méthode de purification:

Purification par affinité contre l'antigène

Taille:

150ul, Concentration: 1000 µg/ml by Nanodrop;

Identification du gène (NCBI):

123

Dilutions recommandées:

WB 1:2000-1:16000

Hôte:

Lapin

Nom complet:

adipose differentiation-related protein

IHC 1:200-1:8000

IF 1:50-1:500

Isotype:

IgG

MW calculé

48 kDa

Immunogen Catalog Number:

AG7539

MW observés:

45-48 kDa

Applications

Applications testées:

IF, IHC, WB, ELISA

Demandes citées:

IF, IHC, WB

Spécificité de l'espèce:

Humain, rat, souris

Espèces citées:

bovin, canin, Humain, poisson-zèbre, porc, rat, singe, souris

Contrôles positifs:

WB : tissu hépatique de souris, cellules 3T3-L1, cellules K-562, cellules NIH/3T3, tissu hépatique de rat

IHC : tissu de cancer du foie humain, tissu de cancer de la prostate humaine, tissu de cancer du côlon humain, tissu de carcinome à cellules rénales humaine, tissu hépatique de souris, tissu hépatique humain

IF : cellules HepG2 traitées à l'acide oléique, cellules HeLa traitées à l'acide oléique

Remarque-IHC: il est suggéré de démasquer l'antigène avec un tampon de TE buffer pH 9,0; (*) A défaut, le démasquage de l'antigène peut être effectué avec un tampon citrate pH 6,0.

Informations générales

ADRP (adipocyte differentiation related protein) also known as ADFP, adipophilin, or perilipin-2, is a member of PAT family which is responsible for the transportation of lipids and the formation of lipid droplets. ADRP is localized on the surface of lipid droplets in a variety of tissues and cell lines. ADRP is not detected in undifferentiated cells but increases rapidly to high levels when adipocyte precursors differentiate into adipocytes. Anti-ADRP antibody is a reliable and sensitive marker for lipid droplet. Enhanced expression of ADRP is linked to diseases with abnormal lipid storage, including hepatic steatosis, atherosclerosis and diabetes. Immunohistochemistry of ADRP may facilitate histomorphological diagnosis of these diseases.

Publications notables

| Autrice | Pubmed ID | Journal | Application |
|-----------------|-----------|---------------|-------------|
| Karuna Irungbam | 31570772 | Lab Invest | WB,IHC,IF |
| Binbin Zhou | 36169888 | Mol Neurobiol | WB |
| Qi Xue Huang | 36175227 | J Dairy Sci | WB |

Stockage

Stockage:

Stocker à -20°C. Stable pendant un an après l'expédition.

Tampon de stockage:

PBS avec azoture de sodium à 0,02 % et glycérol à 50 % pH 7,3

L'aliquote n'est pas nécessaire pour le stockage à -20C

*** Les 20ul contiennent 0,1% de BSA.

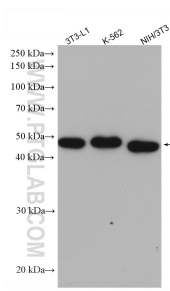
For technical support and original validation data for this product please contact:

T: 1 (888) 4PTGLAB (1-888-478-4522) (toll free in USA), or 1(312) 455-8498 (outside USA)

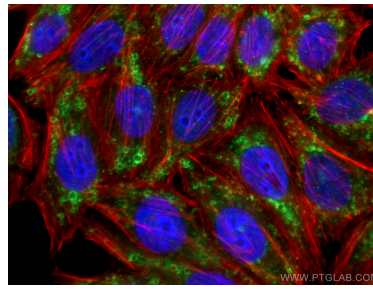
E: proteintech@ptglab.com
W: ptglab.com

This product is exclusively available under Proteintech Group brand and is not available to purchase from any other manufacturer.

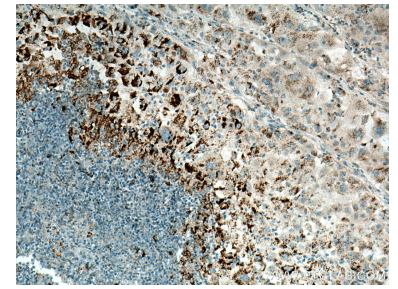
Données de validation sélectionnées



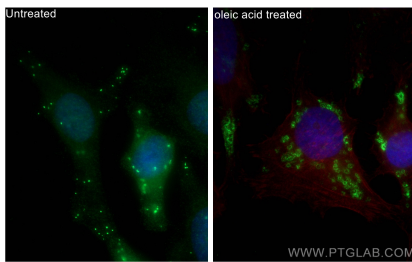
Various lysates were subjected to SDS PAGE followed by western blot with 15294-1-AP (ADRP/Perilipin 2 antibody) at dilution of 1:1000 incubated at room temperature for 1.5 hours.



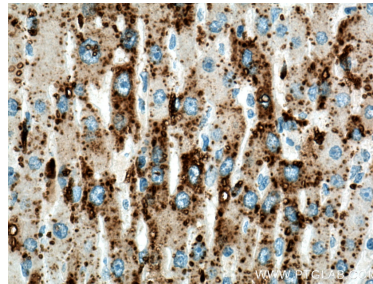
Immunofluorescent analysis of (-20°C Ethanol) fixed oleic acid treated HepG2 cells using 15294-1-AP (ADRP/Perilipin 2 antibody) at dilution of 1:200 and CoraLite488-Conjugated AffiniPure Goat Anti-Rabbit IgG(H+L). Red: CL594-phalloidin staining of F-actin.



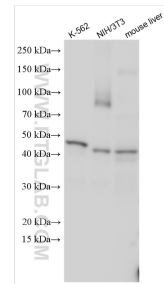
Immunohistochemical analysis of paraffin-embedded human liver cancer tissue slide using 15294-1-AP (ADRP/Perilipin 2 antibody) at dilution of 1:200 (under 10x lens). Heat mediated antigen retrieval with Tris-EDTA buffer (pH 9.0).



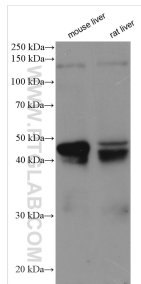
Immunofluorescent analysis of (-20°C Ethanol) fixed oleic acid treated HeLa cells using ADRP/Perilipin 2 antibody (15294-1-AP) at dilution of 1:4000 and CoraLite@488-Conjugated AffiniPure Goat Anti-Rabbit IgG(H+L), CL594-Phalloidine (red).



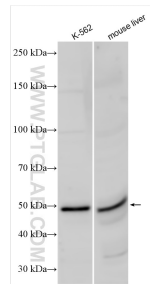
Immunohistochemical analysis of paraffin-embedded human liver cancer tissue slide using 15294-1-AP (ADRP/Perilipin 2 antibody) at dilution of 1:200 (under 40x lens). Heat mediated antigen retrieval with Tris-EDTA buffer (pH 9.0).



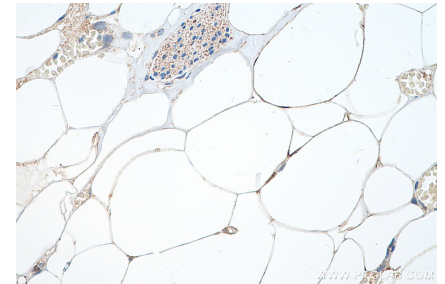
Various lysates were subjected to SDS PAGE followed by western blot with 15294-1-AP (ADRP/Perilipin 2 antibody) at dilution of 1:20000 incubated at room temperature for 1.5 hours.



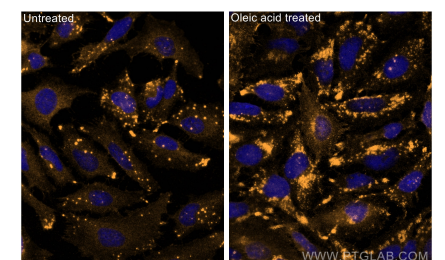
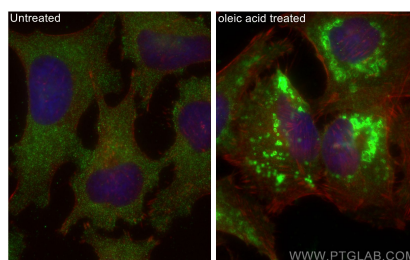
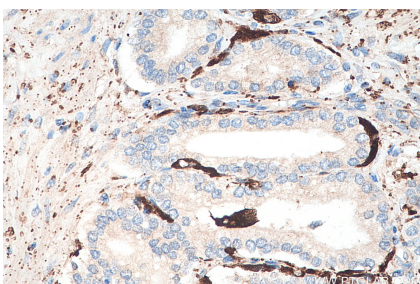
mouse liver tissue were subjected to SDS PAGE followed by western blot with 15294-1-AP (ADRP/Perilipin 2 antibody) at dilution of 1:8000 incubated at room temperature for 1.5 hours.



Various lysates were subjected to SDS PAGE followed by western blot with 15294-1-AP (ADRP/Perilipin 2 antibody) at dilution of 1:15000 incubated at room temperature for 1.5 hours.



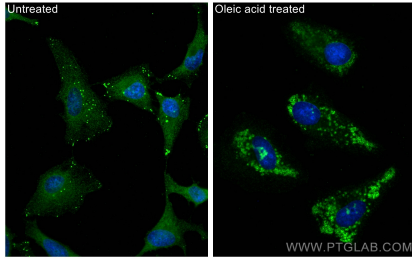
Immunohistochemical analysis of paraffin-embedded human prostate cancer tissue slide using 15294-1-AP (ADRP/Perilipin 2 antibody) at dilution of 1:16000 (under 40x lens). Heat mediated antigen retrieval with Tris-EDTA buffer (pH 9.0).



Immunohistochemical analysis of paraffin-embedded human prostate cancer tissue slide using 15294-1-AP (ADRP/Perilipin 2 antibody) at dilution of 1:16000 (under 40x lens). Heat mediated antigen retrieval with Tris-EDTA buffer (pH 9.0).

Immunofluorescent analysis of (-20°C Ethanol) fixed oleic acid treated HeLa cells using ADRP/Perilipin 2 antibody (15294-1-AP) at dilution of 1:400 and CoraLite®488-Conjugated AffiniPure Goat Anti-Rabbit IgG(H+L), CL594-Phalloidin (red).

Immunofluorescent analysis of (-20°C Ethanol) fixed oleic acid treated HeLa cells using ADRP/Perilipin 2 antibody (15294-1-AP) at dilution of 1:200 and Cy3-conjugated Affinipure Goat Anti-Rabbit IgG(H+L).



Immunofluorescent analysis of (-20°C Ethanol) fixed oleic acid treated HeLa cells using ADRP/Perilipin 2 antibody (15294-1-AP) at dilution of 1:200 and CoraLite®488-Conjugated AffiniPure Goat Anti-Rabbit IgG(H+L).