

À des fins de recherche uniquement

Anticorps Polyclonal de lapin anti-RPH3AL



Numéro de catalogue: 15297-1-AP

2 Publications

Informations de base

Numéro de catalogue:

15297-1-AP

Taille:

150ul, Concentration: 260 µg/ml by Nanodrop and 160 µg/ml by Bradford method using BSA as the standard;

Hôte:

Lapin

Isotype:

IgG

Immunogen Catalog Number:

AG7552

Numéro d'acquisition GenBank:

BC005153

Identification du gène (NCBI):

9501

Nom complet:

rabphilin 3A-like (without C2 domains)

MW calculé

34 kDa

MW observés:

38 kDa

Méthode de purification:

Purification par affinité contre l'antigène

Dilutions recommandées:

WB 1:500-1:2000

IP 0.5-4.0 ug for IP and 1:500-1:1000 for WB

Applications

Applications testées:

IP, WB, ELISA

Demandes citées:

WB

Spécificité de l'espèce:

Humain

Espèces citées:

Humain

Contrôles positifs:

WB : tissu hépatique humain, cellules LO2

IP : cellules HepG2,

Informations générales

Rabphilin-3A-like (RPH3AL), also known as Noc2, is a Rab effector protein with a molecular weight of 38 kDa. It is expressed abundantly in endocrine cells but at low levels in exocrine tissues, playing a direct regulatory role in calcium-ion-dependent exocytosis in both endocrine and exocrine cells, and also having a key role in INS secretion by pancreatic cells. RPH3AL functions as a potential RAB3B effector protein in epithelial cells, and RPH3AL gene is likely a tumor suppressor.

Publications notables

Autrice	Pubmed ID	Journal	Application
Jinn-Shiun Chen	21536019	Clin Chim Acta	WB
Kohichi Matsunaga	27927751	J Cell Sci	WB

Stockage

Stockage:

Stocker à -20°C. Stable pendant un an après l'expédition.

Tampon de stockage:

PBS avec azoture de sodium à 0,02 % et glycérol à 50 % pH 7,3

L'aliquotage n'est pas nécessaire pour le stockage à -20C

*** Les 20ul contiennent 0,1% de BSA.

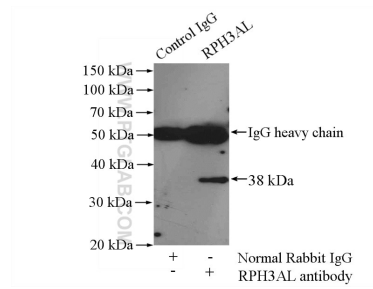
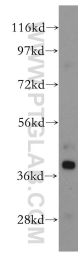
For technical support and original validation data for this product please contact:

T: 1 (888) 4PTGLAB (1-888-478-4522) (toll free in USA), or 1(312) 455-8498 (outside USA)

E: proteintech@ptglab.com
W: ptglab.com

This product is exclusively available under Proteintech Group brand and is not available to purchase from any other manufacturer.

Données de validation sélectionnées



human liver tissue were subjected to SDS PAGE followed by western blot with 15297-1-AP (RPH3AL antibody) at dilution of 1:500 incubated at room temperature for 1.5 hours.

IP Result of anti-RPH3AL (IP:15297-1-AP, 4ug; Detection:15297-1-AP 1:500) with HepG2 cells lysate 2400ug.