

À des fins de recherche uniquement

Anticorps Polyclonal de lapin anti-ALDH2



Numéro de catalogue: 15310-1-AP

Phare

41 Publications

Informations de base

Numéro de catalogue:

15310-1-AP

Taille:

150ul, Concentration: 500 µg/ml by Nanodrop;

Hôte:

Lapin

Isotype:

IgG

Immunogen Catalog Number:

AG7452

Numéro d'acquisition GenBank:

BC002967

Identification du gène (NCBI):

217

Nom complet:

aldehyde dehydrogenase 2 family (mitochondrial)

MW calculé

56 kDa

MW observés:

50-55 kDa

Méthode de purification:

Purification par affinité contre l'antigène

Dilutions recommandées:

WB 1:5000-1:50000

IP 0.5-4.0 µg for IP and 1:500-1:2000 for WB

IHC 1:50-1:500

IF 1:500-1:2000

Applications

Applications testées:

IF, IHC, IP, WB, ELISA

Demandes citées:

CoIP, IF, IHC, IP, WB

Spécificité de l'espèce:

Humain, rat, souris

Espèces citées:

Humain, poisson-zèbre, porc, rat, souris

Remarque-IHC: il est suggéré de démasquer l'antigène avec un tampon de TE buffer pH 9.0; (*) À défaut, 'le démasquage de l'antigène peut être effectué avec un tampon citrate pH 6.0.

Contrôles positifs:

WB : cellules K-562, cellules HEK-293, cellules HepG2, cellules HuH-7, tissu cardiaque humain, tissu hépatique de rat, tissu rénal de rat, tissu rénal de souris, tissu testiculaire de rat, tissu testiculaire de souris

IP : tissu pulmonaire de souris,

IHC : tissu hépatique humain,

IF : cellules A549,

Informations générales

Acetaldehyde dehydrogenase is the next enzyme after alcohol dehydrogenase in the major pathway of alcohol metabolism. It mediates NADP+-dependent oxidation of aldehydes into acids during detoxification of alcohol-derived acetaldehyde; lipid peroxidation; and metabolism of corticosteroids, biogenic amines and neurotransmitters. Genetic variation in ALDH2 is responsible for individual differences in responses to drinking alcohol. Thus, the absence of this enzyme is linked to alcohol intolerance and a reduced risk for alcoholism-related liver disease.

Publications notables

Autrice	Pubmed ID	Journal	Application
Yusuke Amanuma	26374466	Sci Rep	WB
Xiaojuan Chao	34486131	Alcohol Clin Exp Res	WB
Shanshan Zhong	30375985	J Clin Invest	WB,IP,IF

Stockage

Stockage:

Stocker à -20°C. Stable pendant un an après l'expédition.

Tampon de stockage:

PBS avec azoture de sodium à 0,02 % et glycérol à 50 % pH 7,3

L'aliquotage n'est pas nécessaire pour le stockage à -20C

*** Les 20ul contiennent 0,1% de BSA.

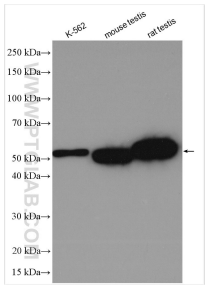
For technical support and original validation data for this product please contact:

T: 1 (888) 4PTGLAB (1-888-478-4522) (toll free in USA), or 1(312) 455-8498 (outside USA)

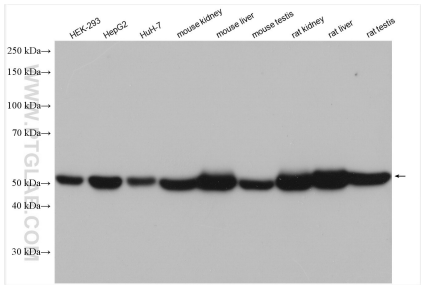
E: proteintech@ptglab.com
W: ptglab.com

This product is exclusively available under Proteintech Group brand and is not available to purchase from any other manufacturer.

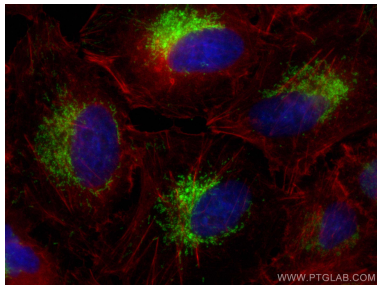
Données de validation sélectionnées



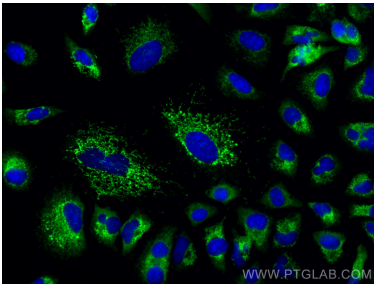
Various lysates were subjected to SDS PAGE followed by western blot with 15310-1-AP (ALDH2 antibody) at dilution of 1:10000 incubated at room temperature for 1.5 hours.



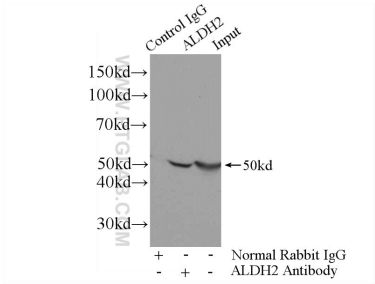
Various lysates were subjected to SDS PAGE followed by western blot with 15310-1-AP (ALDH2 antibody) at dilution of 1:8000 incubated at room temperature for 1.5 hours.



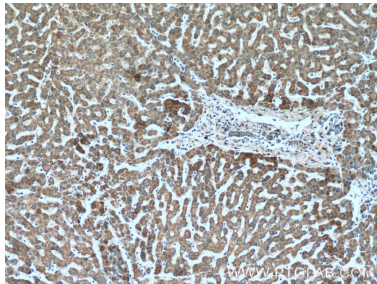
Immunofluorescent analysis of (4% PFA) fixed A549 cells using ALDH2 antibody (15310-1-AP) at dilution of 1:1000 and CoraLite®488-Conjugated AffiniPure Goat Anti-Rabbit IgG(H+L), CL594-Phalloidin (red).



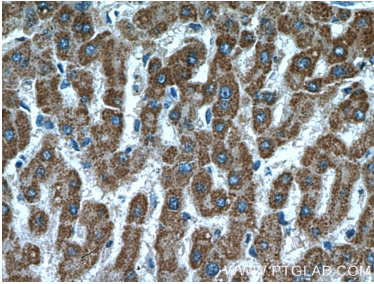
Immunofluorescent analysis of (-20°C Methanol) fixed A549 cells using ALDH2 antibody (15310-1-AP) at dilution of 1:400 and CoraLite®488-Conjugated AffiniPure Goat Anti-Rabbit IgG(H+L).



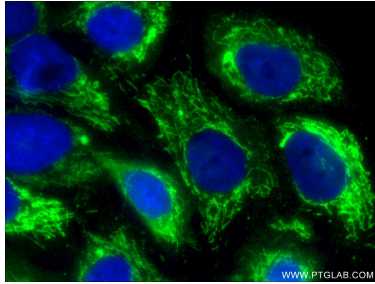
IP Result of anti-ALDH2 (IP:15310-1-AP, 4ug; Detection:15310-1-AP 1:1000) with mouse lung tissue lysate 2800ug.



Immunohistochemical analysis of paraffin-embedded human liver tissue slide using 15310-1-AP (ALDH2 Antibody) at dilution of 1:200 (under 10x lens).



Immunohistochemical analysis of paraffin-embedded human liver tissue slide using 15310-1-AP (ALDH2 Antibody) at dilution of 1:200 (under 40x lens).



Immunofluorescent analysis of (-20°C Ethanol) fixed A549 cells using 15310-1-AP (ALDH2 antibody) at dilution of 1:50 and Alexa Fluor 488-conjugated AffiniPure Goat Anti-Rabbit IgG(H+L).