

À des fins de recherche uniquement

Anticorps Polyclonal de lapin anti-POLR3D



Numéro de catalogue: 15339-1-AP

1 Publications

Informations de base

Numéro de catalogue:

15339-1-AP

Taille:

150ul, Concentration: 550 µg/ml by Nanodrop and 400 µg/ml by Bradford method using BSA as the standard;

Hôte:

Lapin

Isotype:

IgG

Immunogen Catalog Number:

AG7542

Numéro d'acquisition GenBank:

BC004484

Identification du gène (NCBI):

661

Nom complet:

polymerase (RNA) III (DNA directed) polypeptide D, 44kDa

MW calculé

44 kDa

MW observés:

44 kDa

Méthode de purification:

Purification par affinité contre l'antigène

Dilutions recommandées:

WB 1:1000-1:4000

IP 0.5-4.0 ug for IP and 1:200-1:1000 for WB

IF 1:50-1:500

Applications

Applications testées:

IF, IP, WB, ELISA

Demandes citées:

WB

Spécificité de l'espèce:

Humain, rat, souris

Espèces citées:

Humain

Contrôles positifs:

WB : tissu cérébral de souris, cellules HeLa, tissu cérébral de rat, tissu testiculaire de rat, tissu testiculaire de souris

IP : cellules HeLa,

IF : cellules HeLa,

Informations générales

DNA-dependent RNA polymerase catalyzes the transcription of DNA into RNA using the four ribonucleoside triphosphates as substrates. Polymerase (RNA) III (DNA directed) polypeptide D (POLR3D) plays a key role in sensing and limiting infection by intracellular bacteria and DNA viruses and acts as nuclear and cytosolic DNA sensor involved in innate immune response. POLR3D can sense non-self dsDNA that serves as template for transcription into dsRNA.

Publications notables

Autrice	Pubmed ID	Journal	Application
Richa Ahuja	28488757	FEBS J	WB

Stockage

Stockage:

Stocker à -20°C. Stable pendant un an après l'expédition.

Tampon de stockage:

PBS avec azoture de sodium à 0,02 % et glycérol à 50 % pH 7,3

L'aliquotage n'est pas nécessaire pour le stockage à -20C

*** Les 20ul contiennent 0,1% de BSA.

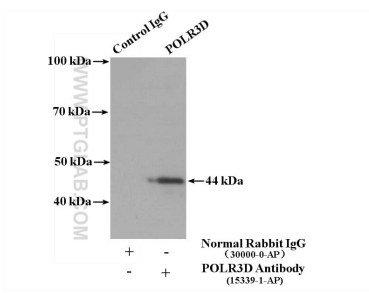
For technical support and original validation data for this product please contact:

T: 1 (888) 4PTGLAB (1-888-478-4522) (toll free in USA), or 1(312) 455-8498 (outside USA)

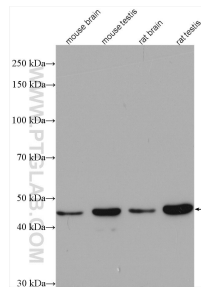
E: proteintech@ptglab.com
W: ptglab.com

This product is exclusively available under Proteintech Group brand and is not available to purchase from any other manufacturer.

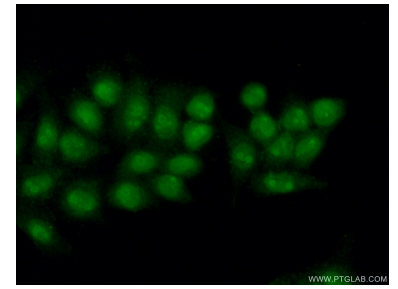
Données de validation sélectionnées



IP result of anti-POLR3D (IP:15339-1-AP, 4ug; Detection:15339-1-AP 1:300) with HeLa cells lysate 2600 ug.



Various lysates were subjected to SDS PAGE followed by western blot with 15339-1-AP (POLR3D antibody) at dilution of 1:2000 incubated at room temperature for 1.5 hours.



Immunofluorescent analysis of (10% Formaldehyde) fixed HeLa cells using 15339-1-AP (POLR3D antibody) at dilution of 1:50 and Alexa Fluor 488-conjugated AffiniPure Goat Anti-Rabbit IgG(H+L).