

À des fins de recherche uniquement

Anticorps Polyclonal de lapin anti-CKMT1A



Numéro de catalogue: 15346-1-AP

Phare

15 Publications

Informations de base

Numéro de catalogue:

15346-1-AP

Taille:

150ul, Concentration: 600 µg/ml by Nanodrop and 433 µg/ml by Bradford method using BSA as the standard;

Hôte:

Lapin

Isotype:

IgG

Immunogen Catalog Number:

AG7583

Numéro d'acquisition GenBank:

BC001926

Identification du gène (NCBI):

548596

Nom complet:

creatine kinase, mitochondrial 1A

MW calculé

47 kDa

MW observés:

40-50 kDa

Méthode de purification:

Purification par affinité contre l'antigène

Dilutions recommandées:

WB 1:500-1:3000

IP 0.5-4.0 ug for IP and 1:500-1:2000 for WB

IHC 1:50-1:500

Applications

Applications testées:

IHC, IP, WB, ELISA

Demandes citées:

FC, IF, IHC, WB

Spécificité de l'espèce:

Humain, rat, souris

Espèces citées:

Humain, porc, rat, souris

Remarque-IHC: il est suggéré de démasquer l'antigène avec un tampon de TE buffer pH 9,0; (*) A défaut, 'le démasquage de l'antigène peut être 'effectué avec un tampon citrate pH 6,0.

Contrôles positifs:

WB : tissu cardiaque de rat, cellules A549, cellules HEK-293, tissu cardiaque de souris, tissu de côlon humain, tissu testiculaire de souris, tissu testiculaire humain

IP : tissu cardiaque de souris,

IHC : tissu de cancer du sein humain, tissu de cancer du côlon humain

Informations générales

CKMT1A (Creatine kinase U-type, mitochondrial) is also named as CKMT and belongs to the ATP:guanido phosphotransferase family. CKMT1A is a nearly identical copy of the CKMT1B gene. Both genes encode an identical CKMT1 protein (PMID:17098888). It reversibly catalyzes the transfer of phosphate between ATP and various phosphogens. It has 2 isoforms produced by alternative splicing with the molecular weight of 47 kDa and 50 kDa.

Publications notables

Autrice	Pubmed ID	Journal	Application
Paul Ikgan Sia	31634394	Invest Ophthalmol Vis Sci	WB,IHC,FC
Tianwei Chen	36453019	Mol Oncol	WB
Glyn Chidlow	36467607	Front Cell Neurosci	IHC

Stockage

Stockage:

Stocker à -20°C. Stable pendant un an après l'expédition.

Tampon de stockage:

PBS avec azoture de sodium à 0,02 % et glycérol à 50 % pH 7,3

L'aliquotage n'est pas nécessaire pour le stockage à -20C

*** Les 20ul contiennent 0,1% de BSA.

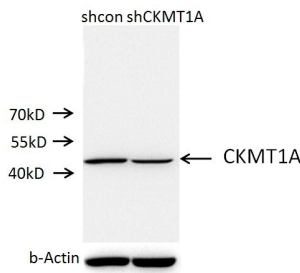
For technical support and original validation data for this product please contact:

T: 1 (888) 4PTGLAB (1-888-478-4522) (toll free in USA), or 1(312) 455-8498 (outside USA)

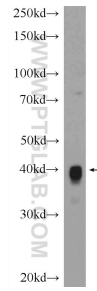
E: proteintech@ptglab.com
W: ptglab.com

This product is exclusively available under Proteintech Group brand and is not available to purchase from any other manufacturer.

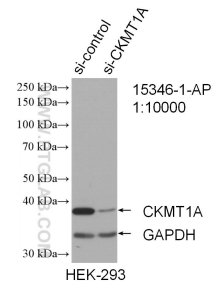
Données de validation sélectionnées



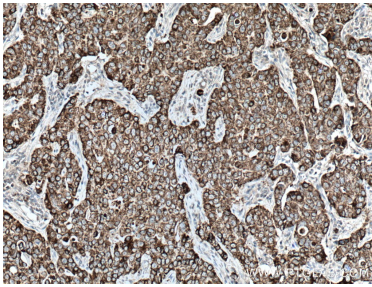
A549 cells (shcontrol and shRNA of CKMT1A) were subjected to SDS PAGE followed by western blot with 15346-1-AP (CKMT1A antibody) at dilution of 1:30.



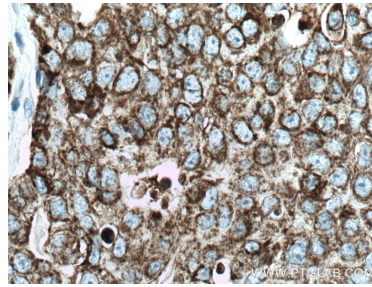
rat heart tissue were subjected to SDS PAGE followed by western blot with 15346-1-AP (CKMT1A Antibody) at dilution of 1:1500 incubated at room temperature for 1.5 hours.



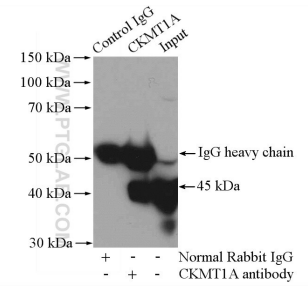
WB result of CKMT1A antibody (15346-1-AP; 1:10000; incubated at room temperature for 1.5 hours) with sh-Control and sh-CKMT1A transfected HEK-293 cells.



Immunohistochemical analysis of paraffin-embedded human breast cancer tissue slide using 15346-1-AP (CKMT1A antibody) at dilution of 1:200 (under 10x lens. Heat mediated antigen retrieval with Tris-EDTA buffer (pH 9.0).



Immunohistochemical analysis of paraffin-embedded human breast cancer tissue slide using 15346-1-AP (CKMT1A antibody) at dilution of 1:200 (under 40x lens. Heat mediated antigen retrieval with Tris-EDTA buffer (pH 9.0).



IP Result of anti-CKMT1A (IP:15346-1-AP, 4ug; Detection:15346-1-AP 1:1000) with mouse heart tissue lysate 3200ug.