

À des fins de recherche uniquement

Anticorps Polyclonal de lapin anti-NDP



Numéro de catalogue: 15380-1-AP

Informations de base

Numéro de catalogue:

15380-1-AP

Taille:

150ul , Concentration: 300 µg/ml by Bradford method using BSA as the standard;

Hôte:

Lapin

Isotype:

IgG

Immunogen Catalog Number:

AG4066

Numéro d'acquisition GenBank:

BC029901

Identification du gène (NCBI):

4693

Nom complet:

Norrie disease (pseudoglioma)

MW calculé

15 kDa

MW observés:

50-60 kDa

Méthode de purification:

Purification par affinité contre l'antigène

Dilutions recommandées:

WB 1:500-1:1000

Applications

Applications testées:

WB, ELISA

Spécificité de l'espèce:

Humain, souris

Contrôles positifs:

WB : tissu testiculaire de souris, tissu oculaire de souris

Informations générales

NDP, also named as EVR2, ND and Norrin, is a secreted regulatory protein that remains tightly associated with the extracellular matrix. Mutations in the NDP gene are associated with the Norrie disease. Signaling induced by the protein NDP regulates vascular development of vertebrate retina and controls important blood vessels in the ear. It binds with high affinity to Frizzled 4, and Frizzled 4 knockout mice exhibit abnormal vascular development of the retina. This antibody detects 11-15 kDa (monomer) and 48 kDa (polymers, refer: 25692504).

Stockage

Stockage:

Stocker à -20°C. Stable pendant un an après l'expédition.

Tampon de stockage:

PBS avec azoture de sodium à 0,02 % et glycérol à 50 % pH 7,3

L'aliquotage n'est pas nécessaire pour le stockage à -20C

***** Les 20ul contiennent 0,1% de BSA.**

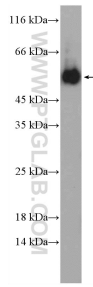
For technical support and original validation data for this product please contact:

T: 1 (888) 4PTGLAB (1-888-478-4522) (toll free in USA), or 1(312) 455-8498 (outside USA)

E: proteintech@ptglab.com
W: ptglab.com

This product is exclusively available under Proteintech Group brand and is not available to purchase from any other manufacturer.

Données de validation sélectionnées



mouse testis tissue were subjected to SDS PAGE followed by western blot with 15380-1-AP (NDP antibody) at dilution of 1:500 incubated at room temperature for 1.5 hours.