

À des fins de recherche uniquement

# Anticorps Polyclonal de lapin anti-CEL



Numéro de catalogue: 15384-1-AP

Phare

4 Publications

## Informations de base

Numéro de catalogue:

15384-1-AP

Taille:

150ul, Concentration: 500 µg/ml by Nanodrop and 233 µg/ml by Bradford method using BSA as the standard;

Hôte:

Lapin

Isotype:

IgG

Immunogen Catalog Number:

AG5262

Numéro d'acquisition GenBank:

BC042510

Identification du gène (NCBI):

1056

Nom complet:

carboxyl ester lipase (bile salt-stimulated lipase)

MW calculé

79 kDa

MW observés:

67 kDa

Méthode de purification:

Purification par affinité contre l'antigène

Dilutions recommandées:

WB 1:500-1:3000

IHC 1:50-1:500

IF 1:50-1:500

## Applications

Applications testées:

IF, IHC, WB, ELISA

Demandes citées:

IF, IHC, WB

Spécificité de l'espèce:

Humain, rat, souris

Espèces citées:

Humain, souris

**Remarque-IHC: il est suggéré de démasquer l'antigène avec un tampon de TE buffer pH 9,0; (\*) À défaut, 'le démasquage de l'antigène peut être 'effectué avec un tampon citrate pH 6,0.**

Contrôles positifs:

WB : tissu hépatique humain, cellules HeLa, tissu cardiaque de souris, tissu hépatique de souris

IHC : tissu de cancer du pancréas humain,

IF : tissu de cancer du pancréas humain, cellules HeLa

## Informations générales

Bile salt-activated lipase, previously named cholesterol esterase or bile salt-stimulated (or dependent) lipase, is a 74 kDa lipolytic enzyme capable of hydrolyzing cholesteryl esters, tri-, di-, and mono-acylglycerols, phospholipids, lysophospholipids, and ceramide(PMID:12454261). The same enzyme is present as a major protein in milk and as a minor constituent in liver, activated macrophages, and endothelial cells(PMID:11733511). Defects in CEL are a cause of maturity-onset diabetes of the young type 8 with exocrine dysfunction (MODY8)(PMID:16369531). The full length protein has 11 glycosylation sites. It has 2 isoforms produced by alternative splicing.

## Publications notables

Autrice	Pubmed ID	Journal	Application
Minghe Zhou	34643375	ACS Biomater Sci Eng	WB,IF
Matthew J Kolar	27509211	Biochemistry	WB
Xiao-Tong Mao	35398595	Cell Mol Gastroenterol Hepatol	WB,IHC

## Stockage

Stockage:

Stocker à -20°C. Stable pendant un an après l'expédition.

Tampon de stockage:

PBS avec azoture de sodium à 0,02 % et glycérol à 50 % pH 7,3

L'aliquotage n'est pas nécessaire pour le stockage à -20C

\*\*\* Les 20ul contiennent 0,1% de BSA.

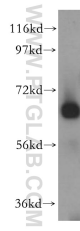
For technical support and original validation data for this product please contact:

T: 1 (888) 4PTGLAB (1-888-478-4522) (toll free in USA), or 1(312) 455-8498 (outside USA)

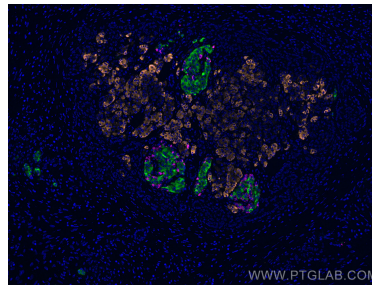
E: proteintech@ptglab.com  
W: ptglab.com

This product is exclusively available under Proteintech Group brand and is not available to purchase from any other manufacturer.

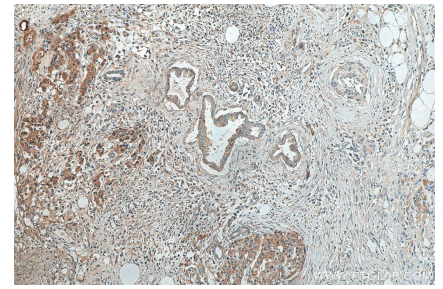
## Données de validation sélectionnées



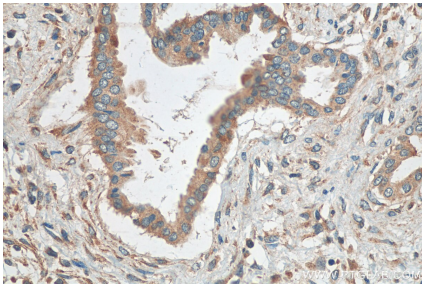
human liver tissue were subjected to SDS PAGE followed by western blot with 15384-1-AP (CEL antibody) at dilution of 1:500 incubated at room temperature for 1.5 hours.



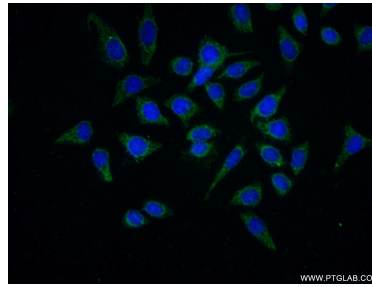
Immunofluorescent analysis of (4% PFA) fixed human pancreas cancer tissue using CEL antibody (15384-1-AP) at dilution of 1:200 and TRITC-Goat anti-Rabbit IgG, CoraLite® Plus 647 Glucagon antibody (CL647-15954, Magenta), CoraLite®488 INS antibody (CL488-66198, Clone: 4B6A7, green).



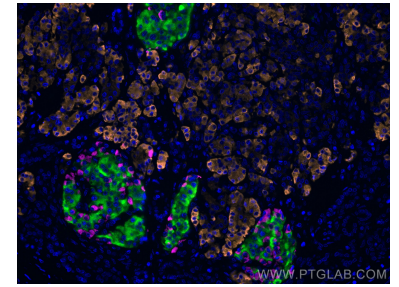
Immunohistochemical analysis of paraffin-embedded human pancreas cancer tissue slide using 15384-1-AP (CEL antibody) at dilution of 1:200 (under 10x lens). Heat mediated antigen retrieval with Tris-EDTA buffer (pH 9.0).



Immunohistochemical analysis of paraffin-embedded human pancreas cancer tissue slide using 15384-1-AP (CEL antibody) at dilution of 1:200 (under 40x lens). Heat mediated antigen retrieval with Tris-EDTA buffer (pH 9.0).



Immunofluorescent analysis of (-20°C Ethanol) fixed HeLa cells using 15384-1-AP (CEL antibody) at dilution of 1:25 and Alexa Fluor 488-conjugated AffiniPure Goat Anti-Rabbit IgG(H+L).



Immunofluorescent analysis of (4% PFA) fixed human pancreas cancer tissue using CEL antibody (15384-1-AP) at dilution of 1:200 and TRITC-Goat anti-Rabbit IgG, CoraLite® Plus 647 Glucagon antibody (CL647-15954, Magenta), CoraLite®488 INS antibody (CL488-66198, Clone: 4B6A7, green).