

À des fins de recherche uniquement

Anticorps Polyclonal de lapin anti-Connexin-43



Numéro de catalogue: 15386-1-AP

33 Publications

Informations de base

Numéro de catalogue:

15386-1-AP

Taille:

150ul, Concentration: 333 µg/ml by Bradford method using BSA as the standard;

Hôte:

Lapin

Isotype:

IgG

Immunogen Catalog Number:

AG6698

Numéro d'acquisition GenBank:

BC026329

Identification du gène (NCBI):

2697

Nom complet:

gap junction protein, alpha 1, 43kDa

MW calculé

43 kDa

MW observés:

43-47 kDa

Méthode de purification:

Purification par affinité contre l'antigène

Dilutions recommandées:

WB 1:500-1:2000

IP 0.5-4.0 µg for IP and 1:500-1:1000 for WB

IHC 1:50-1:200

IF 1:50-1:500

Applications

Applications testées:

FC, IF, IHC, IP, WB, ELISA

Demandes citées:

CoIP, IF, IHC, IP, WB

Spécificité de l'espèce:

Humain, rat, souris

Espèces citées:

bovin, Humain, rat, souris

Remarque-IHC: il est suggéré de démasquer l'antigène avec un tampon de TE buffer pH 9,0; (*) A défaut, 'le démasquage de l'antigène peut être 'effectué avec un tampon citrate pH 6,0.

Contrôles positifs:

WB : cellules HeLa,

IP : tissu cardiaque de souris,

IHC : tissu cardiaque de souris, tissu cardiaque humain

IF : cellules HeLa, tissu cardiaque de souris

Informations générales

Connexin-43 (Cx43, also known as gap junction alpha-1), a member of connexin family, plays essential roles in gap junction communication that facilitates direct communication among adjacent cells (PMID: 12270943). Usually, six connexin proteins oligomerize into a hemi-channel or connexon during intercellular channel formation (PMID: 12270943). Mutations of Cx43 may cause a series of diseases such as oculodentodigital dysplasia (ODDD), syndactyly 3 (SDTY3), hypoplastic left heart syndrome 1 (HLHS1) and so on (PMID: 18161618, 1472936, 1147490).

Publications notables

Autrice	Pubmed ID	Journal	Application
Xueling He	28969971	Prog Biophys Mol Biol	WB
E O Adegoke	30267989	Ecotoxicol Environ Saf	IF
Hsiang-Chun Lee	28935953	Sci Rep	WB,IP

Stockage

Stockage:

Stocker à -20°C. Stable pendant un an après l'expédition.

Tampon de stockage:

PBS avec azoture de sodium à 0,02 % et glycérol à 50 % pH 7,3

L'aliquotage n'est pas nécessaire pour le stockage à -20C

*** Les 20ul contiennent 0,1% de BSA.

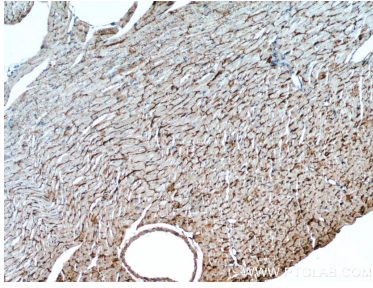
For technical support and original validation data for this product please contact:

T: 1 (888) 4PTGLAB (1-888-478-4522) (toll free in USA), or 1(312) 455-8498 (outside USA)

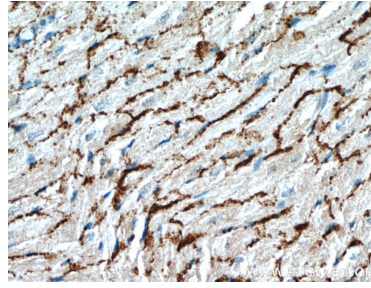
E: proteintech@ptglab.com
W: ptglab.com

This product is exclusively available under Proteintech Group brand and is not available to purchase from any other manufacturer.

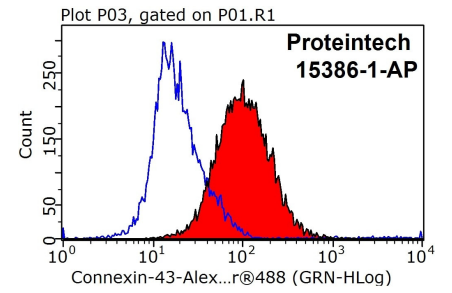
Données de validation sélectionnées



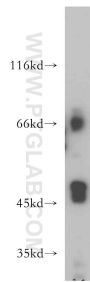
Immunohistochemical analysis of paraffin-embedded mouse heart using 15386-1-AP (GJA1 antibody) at dilution of 1:100 (under 10x lens).



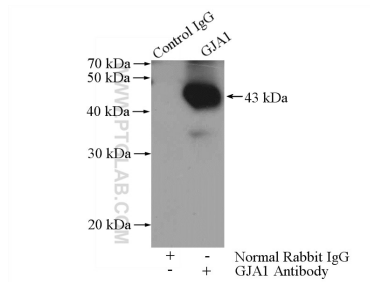
Immunohistochemical analysis of paraffin-embedded mouse heart using 15386-1-AP (GJA1 antibody) at dilution of 1:100 (under 40x lens).



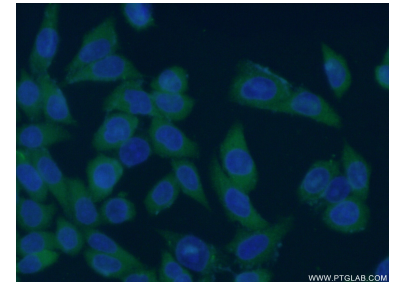
1X10⁶ Jurkat cells were stained with 0.5ug Connexin-43 antibody (15386-1-AP, red) and control antibody (blue). Fixed with 90% MeOH blocked with 3% BSA (30 min). Alexa Fluor 488-conjugated AffiniPure Goat Anti-Rabbit IgG(H+L) with dilution 1:1000.



HeLa cells were subjected to SDS PAGE followed by western blot with 15386-1-AP (GJA1 antibody) at dilution of 1:500 incubated at room temperature for 1.5 hours.



IP Result of anti-Connexin-43 (IP:15386-1-AP, 4ug; Detection:15386-1-AP 1:500) with mouse heart tissue lysate 3200ug.



Immunofluorescent analysis of (-20°C Ethanol) fixed HeLa cells using 15386-1-AP (Connexin-43 antibody) at dilution of 1:50 and Alexa Fluor 488-conjugated AffiniPure Goat Anti-Rabbit IgG(H+L).