

À des fins de recherche uniquement

Anticorps Polyclonal de lapin anti-RPL6



Numéro de catalogue: 15387-1-AP

8 Publications

Informations de base

Numéro de catalogue:

15387-1-AP

Taille:

150ul, Concentration: 600 µg/ml by Nanodrop and 333 µg/ml by Bradford method using BSA as the standard;

Hôte:

Lapin

Isotype:

IgG

Immunogen Catalog Number:

AG6840

Numéro d'acquisition GenBank:

BC004138

Identification du gène (NCBI):

6128

Nom complet:

ribosomal protein L6

MW calculé

33 kDa

MW observés:

34 kDa

Méthode de purification:

Purification par affinité contre l'antigène

Dilutions recommandées:

WB 1:2000-1:10000

IHC 1:50-1:500

IF 1:50-1:500

Applications

Applications testées:

IF, IHC, WB, ELISA

Demandes citées:

FC, IF, IHC, WB

Spécificité de l'espèce:

Humain, rat, souris

Espèces citées:

Humain, rat, souris

Remarque-IHC: il est suggéré de démasquer l'antigène avec un tampon de TE buffer pH 9,0; (*) À défaut, 'le démasquage de l'antigène peut être 'effectué avec un tampon citrate pH 6,0.

Contrôles positifs:

WB : cellules HEK-293T, cellules HeLa, cellules HepG2, cellules Jurkat

IHC : tissu hépatique humain,

IF : cellules HepG2,

Informations générales

Ribosomes are large multiple protein complexes which is composed of more than 80 components and provide a protein-synthesizing machinery for all living cells. Ribosomal protein like 6 (RPL6, also called Taxreb107 for Tax responsive element binding protein 107), one of the ribosomal components, can bind with the Tax responsive element of human T cell leukemia virus (HTLV)-I in addition to be assembled to ribosomes [PMID:12031506]. Overexpressed in gastric cancer could promote cell growth and cell cycle progression at least through upregulating cyclin E expression [PMID:20171175].

Publications notables

Autrice	Pubmed ID	Journal	Application
Xuxiu Tao	36156329	Cancer Sci	WB,IHC,IF
Kai Ma	35637200	Cell Discov	IF
Sipeng Li	34265469	Mol Cell Proteomics	WB

Stockage

Stockage:

Stocker à -20°C. Stable pendant un an après l'expédition.

Tampon de stockage:

PBS avec azoture de sodium à 0,02 % et glycérol à 50 % pH 7,3

L'aliquotage n'est pas nécessaire pour le stockage à -20C

*** Les 20ul contiennent 0,1% de BSA.

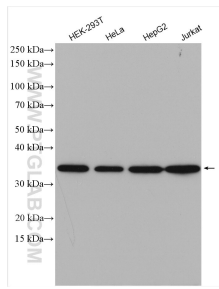
For technical support and original validation data for this product please contact:

T: 1 (888) 4PTGLAB (1-888-478-4522) (toll free in USA), or 1(312) 455-8498 (outside USA)

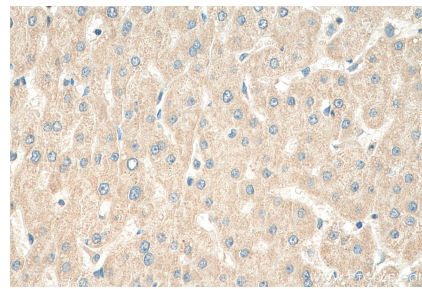
E: proteintech@ptglab.com
W: ptglab.com

This product is exclusively available under Proteintech Group brand and is not available to purchase from any other manufacturer.

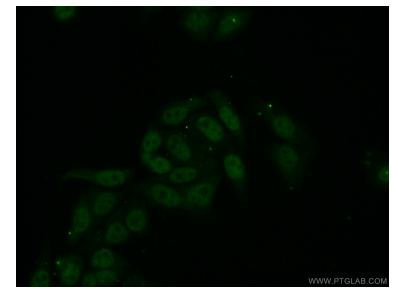
Données de validation sélectionnées



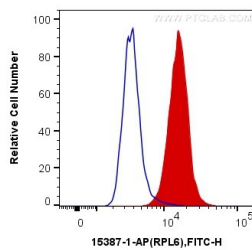
Various lysates were subjected to SDS PAGE followed by western blot with 15387-1-AP (RPL6 antibody) at dilution of 1:5000 incubated at room temperature for 1.5 hours.



Immunohistochemical analysis of paraffin-embedded human liver tissue slide using 15387-1-AP (RPL6 antibody) at dilution of 1:200 (under 40x lens). Heat mediated antigen retrieval with Tris-EDTA buffer (pH 9.0).



Immunofluorescent analysis of (10% Formaldehyde) fixed HepG2 cells using 15387-1-AP (RPL6 antibody) at dilution of 1:50 and Alexa Fluor 488-conjugated AffiniPure Goat Anti-Rabbit IgG(H+L).



1X10⁶ HepG2 cells were intracellularly stained with 0.2 ug Anti-Human RPL6 (15387-1-AP) and CoraLite®488-Conjugated AffiniPure Goat Anti-Rabbit IgG(H+L) at dilution 1:1000 (red), or 0.2 ug Control Antibody. Cells were fixed with 4% PFA and permeabilized with Flow Cytometry Perm Buffer (PF00011-C).