

À des fins de recherche uniquement

# Anticorps Polyclonal de lapin anti-SATB1



Numéro de catalogue: 15400-1-AP

Phare

6 Publications

## Informations de base

Numéro de catalogue:

15400-1-AP

Taille:

150ul, Concentration: 600 µg/ml by Nanodrop and 367 µg/ml by Bradford method using BSA as the standard;

Hôte:

Lapin

Isotype:

IgG

Immunogen Catalog Number:

AG7615

Numéro d'acquisition GenBank:

BC001744

Identification du gène (NCBI):

6304

Nom complet:

SATB homeobox 1

MW calculé

86 kDa

MW observés:

86-100 kDa

Méthode de purification:

Purification par affinité contre l'antigène

Dilutions recommandées:

WB 1:1000-1:8000

IP 0.5-4.0 ug for IP and 1:500-1:1000 for WB

## Applications

Applications testées:

IP, WB, ELISA

Demandes citées:

IP, WB

Spécificité de l'espèce:

Humain, rat, souris

Espèces citées:

Humain, rat, souris

Contrôles positifs:

WB : tissu cérébral humain, cellules HEK-293, tissu cérébral de rat, tissu cérébral de souris, tissu splénique de souris

IP : cellules HEK-293,

## Informations générales

Epigenetic modifications and dynamic changes in chromatin organization by organizer proteins have recently been shown to play an instrumental role in regulating cancer-promoting genes. Special AT-rich binding protein (SATB1) is a unique type of global regulator that integrates higher-order chromatin organization -withregulation of gene expression. [PMID:23076250,22998183,23121661] SATB1 is a T cell-enriched transcription factor and a chromatin organizer essential for controlling genes that participate in T-cell development and activation. It regulates gene expression by periodically anchoring matrix attachment regions to the nuclear matrix and directly recruiting chromatin-modifying factors. Depending on its posttranslational modifications, SATB1 activates or represses multiple genes. Its expression is regulated by interleukin-4 (IL4) during T helper-2(Th2) cell differentiation [PMID: 20522714]. The calculated molecular weight of SATB1 is 86 kDa, but modified SATB1 is about 100 kDa (PMID: 22879953).

## Publications notables

Autrice	Pubmed ID	Journal	Application
Sikai Zhan	36274077	Mol Neurobiol	WB
Dongni Zhou	33390772	Int J Med Sci	WB
Jiale Cai	35483515	Pharmacol Res	WB

## Stockage

Stockage:

Stocker à -20°C. Stable pendant un an après l'expédition.

Tampon de stockage:

PBS avec azoture de sodium à 0,02 % et glycérol à 50 % pH 7,3

L'aliquotage n'est pas nécessaire pour le stockage à -20C

\*\*\* Les 20ul contiennent 0,1% de BSA.

For technical support and original validation data for this product please contact:

T: 1 (888) 4PTGLAB (1-888-478-4522) (toll free in USA), or 1(312) 455-8498 (outside USA)

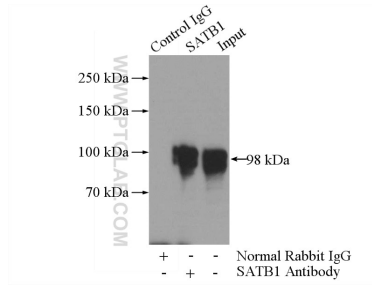
E: proteintech@ptglab.com  
W: ptglab.com

This product is exclusively available under Proteintech Group brand and is not available to purchase from any other manufacturer.

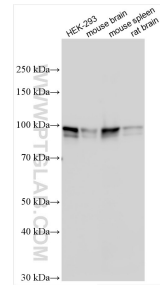
## Données de validation sélectionnées



human brain tissue were subjected to SDS PAGE followed by western blot with 15400-1-AP (SATB1 antibody) at dilution of 1:4000 incubated at room temperature for 1.5 hours.



IP Result of anti-SATB1 (IP:15400-1-AP, 4ug; Detection:15400-1-AP 1:500) with HEK-293 cells lysate 2000ug.



HEK-293 cells were subjected to SDS PAGE followed by western blot with 15400-1-AP (SATB1 antibody) at dilution of 1:40000 incubated at room temperature for 1.5 hours.