

À des fins de recherche uniquement

Anticorps Polyclonal de lapin anti-ACLY



Numéro de catalogue: 15421-1-AP

Phare

47 Publications

Informations de base

Numéro de catalogue:

15421-1-AP

Taille:

150ul, Concentration: 450 µg/ml by Nanodrop;

Hôte:

Lapin

Isotype:

IgG

Immunogen Catalog Number:

AG7709

Numéro d'acquisition GenBank:

BC006195

Identification du gène (NCBI):

47

Nom complet:

ATP citrate lyase

MW calculé

121 kDa

MW observés:

120 kDa

Méthode de purification:

Purification par affinité contre l'antigène

Dilutions recommandées:

WB 1:1000-1:4000

IP 0.5-4.0 µg for IP and 1:500-1:2000 for WB

IHC 1:50-1:500

IF 1:10-1:100

Applications

Applications testées:

FC, IF, IHC, IP, WB, ELISA

Demandes citées:

CoIP, IF, IHC, IP, WB

Spécificité de l'espèce:

Humain, rat, souris

Espèces citées:

Humain, rat, souris

Contrôles positifs:

WB : cellules L02, cellules A549, cellules HeLa, cellules Jurkat, cellules K-562, cellules MCF-7, tissu hépatique de rat, tissu hépatique de souris

IP : cellules K-562,

IHC : tissu de cancer de la prostate humain,

IF : cellules HepG2,

Remarque-IHC: il est suggéré de démasquer l'antigène avec un tampon de TE buffer pH 9,0; (*) À défaut, le démasquage de l'antigène peut être effectué avec un tampon citrate pH 6,0.

Informations générales

ACLY(ATP-citrate synthase) is also named as ACL. It is the primary enzyme responsible for the synthesis of cytosolic acetyl-CoA. ACLY serves as not only a target in oxygenated cells for suppression of lipid synthesis and histone acetylation, but also as a susceptible target in hypoxic cells to restore inhibition of glycolysis. In nonsmall cell lung carcinoma and hepatocellular carcinoma, ACLY is overexpressed compared with normal parenchyma suggesting that ACLY may represent a common target among highly malignant tumors(PMID:19795461). This protein has 2 isoforms produced by alternative splicing.

Publications notables

Autrice	Pubmed ID	Journal	Application
Sophie Trefely	31767181	Mol Metab	WB
Xiaojing Liu	30245009	Cell	WB
G Li	27641336	Oncogene	WB

Stockage

Stockage:

Stocker à -20°C. Stable pendant un an après l'expédition.

Tampon de stockage:

PBS avec azoture de sodium à 0,02 % et glycérol à 50 % pH 7,3

L'aliquotage n'est pas nécessaire pour le stockage à -20C

*** Les 20ul contiennent 0,1% de BSA.

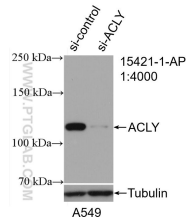
For technical support and original validation data for this product please contact:

T: 1 (888) 4PTGLAB (1-888-478-4522) (toll free in USA), or 1(312) 455-8498 (outside USA)

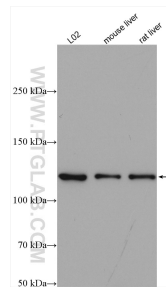
E: proteintech@ptglab.com
W: ptglab.com

This product is exclusively available under Proteintech Group brand and is not available to purchase from any other manufacturer.

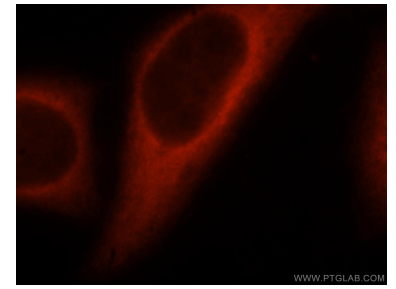
Données de validation sélectionnées



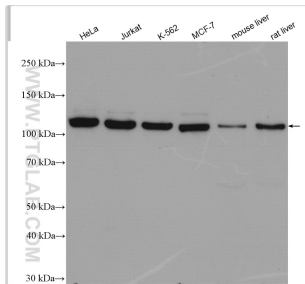
WB result of ACLY antibody (15421-1-AP; 1:4000; incubated at room temperature for 1.5 hours) with sh-Control and sh-ACLY transfected A549 cells.



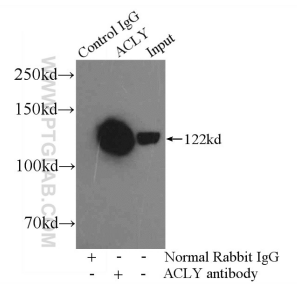
Various lysates were subjected to SDS PAGE followed by western blot with 15421-1-AP (ATP citrate lyase antibody) at dilution of 1:2000 incubated at room temperature for 1.5 hours.



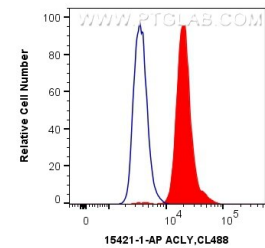
Immunofluorescent analysis of HepG2 cells, using ACLY antibody 15421-1-AP at 1:25 dilution and Rhodamine-labeled goat anti-rabbit IgG (red).



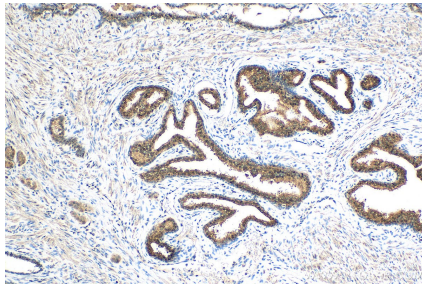
Various lysates were subjected to SDS PAGE followed by western blot with 15421-1-AP (ACLY antibody) at dilution of 1:4000 incubated at room temperature for 1.5 hours.



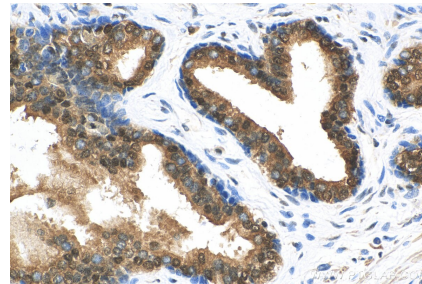
IP Result of anti-ATP citrate lyase (IP:15421-1-AP, 4ug; Detection:15421-1-AP 1:1000) with K-562 cells lysate 3200ug.



1×10^6 HepG2 cells were intracellularly stained with 0.4 ug Anti-Human ACLY (15421-1-AP) and CoraLite®488-Conjugated AffiniPure Goat Anti-Rabbit IgG(H+L) at dilution 1:1000 (red), or 0.4 ug Control Antibody. Cells were fixed with 4% PFA and permeabilized with Flow Cytometry Perm Buffer (PF00011-C).



Immunohistochemical analysis of paraffin-embedded human prostate cancer tissue slide using 15421-1-AP (ACLY antibody) at dilution of 1:200 (under 10x lens). Heat mediated antigen retrieval with Tris-EDTA buffer (pH 9.0).



Immunohistochemical analysis of paraffin-embedded human prostate cancer tissue slide using 15421-1-AP (ACLY antibody) at dilution of 1:200 (under 40x lens). Heat mediated antigen retrieval with Tris-EDTA buffer (pH 9.0).