

À des fins de recherche uniquement

Anticorps Polyclonal de lapin anti-CD300LG



Numéro de catalogue: 15426-1-AP

Informations de base

Numéro de catalogue: 15426-1-AP	Numéro d'acquisition GenBank: BC025395	Méthode de purification: Purification par affinité contre l'antigène
Taille: 150ul, Concentration: 750 µg/ml by Nanodrop and 313 µg/ml by Bradford method using BSA as the standard;	Identification du gène (NCBI): 146894	Dilutions recommandées: WB 1:500-1:2000 IF 1:50-1:500
Hôte: Lapin	Nom complet: CD300 molecule-like family member	
Isotype: IgG	MW calculé: 36 kDa	
Immunogen Catalog Number: AG8075	MW observés: 36 kDa	

Applications

Applications testées: IF, WB, ELISA	Contrôles positifs: WB : tissu rénal humain, cellules HepG2
Spécificité de l'espèce: Humain	IF : cellules HEK-293,

Informations générales

CD300LG, also known as CLM9 (CMRF35-like molecule 9), is a member of the CD300 protein family. Members of this family are cell surface glycoproteins with a single IgV-like extracellular domain, and are involved in the regulation of immune response. CD300LG is a receptor which may mediate L-selectin-dependent lymphocyte rollings and may play an important role in inflammation.

Stockage

Stockage:
Stocker à -20°C. Stable pendant un an après l'expédition.
Tampon de stockage:
PBS avec azoture de sodium à 0,02 % et glycérol à 50 % pH 7,3
L'aliquotage n'est pas nécessaire pour le stockage à -20C

*** Les 20ul contiennent 0,1% de BSA.

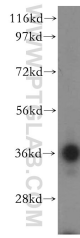
For technical support and original validation data for this product please contact:

T: 1 (888) 4PTGLAB (1-888-478-4522) (toll free in USA), or 1(312) 455-8498 (outside USA)

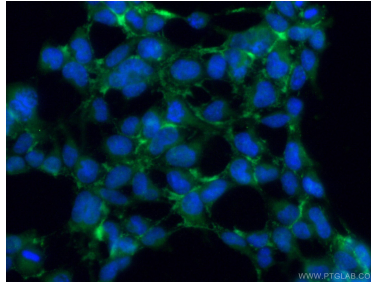
E: proteintech@ptglab.com
W: ptglab.com

This product is exclusively available under Proteintech Group brand and is not available to purchase from any other manufacturer.

Données de validation sélectionnées



human kidney tissue were subjected to SDS PAGE followed by western blot with 15426-1-AP (CD300LG antibody) at dilution of 1:500 incubated at room temperature for 1.5 hours.



Immunofluorescent analysis of (-20°C Ethanol) fixed HEK-293 cells using 15426-1-AP (CD300LG antibody) at dilution of 1:50 and Alexa Fluor 488-conjugated AffiniPure Goat Anti-Rabbit IgG(H+L).