

À des fins de recherche uniquement

Anticorps Polyclonal de lapin anti-LONP1



Numéro de catalogue: 15440-1-AP

Phare

73 Publications

Informations de base

Numéro de catalogue:

15440-1-AP

Taille:

150ul, Concentration: 500 µg/ml by Nanodrop;

Hôte:

Lapin

Isotype:

IgG

Immunogen Catalog Number:

AG7196

Numéro d'acquisition GenBank:

BC000235

Identification du gène (NCBI):

9361

Nom complet:

lon peptidase 1, mitochondrial

MW calculé

106 kDa

MW observés:

100 kDa

Méthode de purification:

Purification par affinité contre l'antigène

Dilutions recommandées:

WB 1:1000-1:6000

IP 0.5-4.0 ug for IP and 1:500-1:2000 for WB

IHC 1:50-1:500

IF 1:50-1:500

Applications

Applications testées:

IF, IHC, IP, WB, ELISA

Demandes citées:

CoIP, IF, IHC, IP, WB

Spécificité de l'espèce:

Humain, rat, souris

Espèces citées:

Humain, rat, singe, souris

Remarque-IHC: il est suggéré de démasquer l'antigène avec un tampon de TE buffer pH 9.0; (*) À défaut, le démasquage de l'antigène peut être effectué avec un tampon citrate pH 6.0.

Contrôles positifs:

WB : cellules HeLa, cellules Jurkat, tissu cardiaque de rat, tissu cardiaque de souris, tissu cardiaque humain, tissu cérébral de rat, tissu cérébral de souris, tissu pulmonaire de rat

IP : tissu cardiaque de souris,

IHC : tissu de cancer du poumon humain,

IF : cellules HepG2,

Informations générales

LONP1(Lon protease homolog, mitochondrial) is also named as LONP, LONHS, HLON, LON, PRSS15, PIM1, MGC1498 and belongs to the peptidase S16 family. It seems to play a major role in the elimination of oxidatively modified proteins in the mitochondrial matrix(PMID:18021745). LONP1, also a nuclearly encoded and mitochondrially located stress-responsive protease, is involved in heme-mediated ALAS-1 turnover(PMID:21659532). It recognizes specific surface determinants or folds, initiates proteolysis at solvent-accessible sites, and generates unfolded polypeptides that are then progressively degraded(PMID:15870080). LONP1 has some isoforms with the MW of 106 kDa, 100 kDa and 86 kDa.

Publications notables

Autrice	Pubmed ID	Journal	Application
Ruosi Yao	33061303	Drug Des Devel Ther	WB
Ya-Ling Yang	32961796	Int J Mol Sci	WB
Reiko Iida	30310528	Oxid Med Cell Longev	WB

Stockage

Stockage:

Stocker à -20°C. Stable pendant un an après l'expédition.

Tampon de stockage:

PBS avec azoture de sodium à 0,02 % et glycérol à 50 % pH 7,3

L'aliquotage n'est pas nécessaire pour le stockage à -20C

*** Les 20ul contiennent 0,1% de BSA.

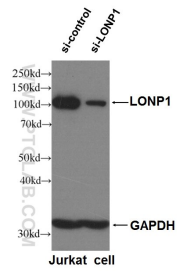
For technical support and original validation data for this product please contact:

T: 1 (888) 4PTGLAB (1-888-478-4522) (toll free in USA), or 1(312) 455-8498 (outside USA)

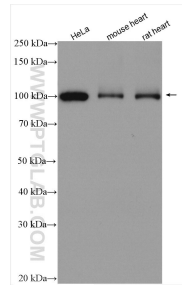
E: proteintech@ptglab.com
W: ptglab.com

This product is exclusively available under Proteintech Group brand and is not available to purchase from any other manufacturer.

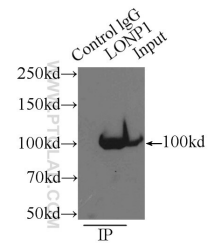
Données de validation sélectionnées



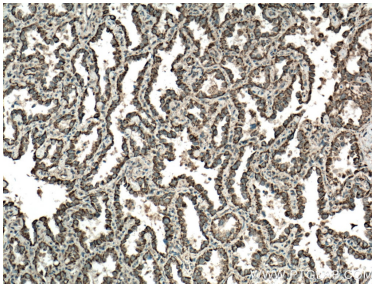
WB result of LONP1 antibody (15440-1-AP, 1:6000) with si-Control and si-LONP1 transfected Jurkat cells.



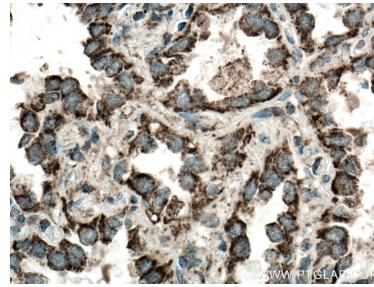
Various lysates were subjected to SDS PAGE followed by western blot with 15440-1-AP (LONP1 antibody) at dilution of 1:3000 incubated at room temperature for 1.5 hours.



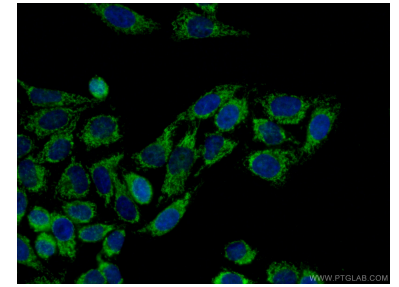
IP Result of anti-LONP1 (IP:15440-1-AP, 3ug; Detection:15440-1-AP 1:1000) with mouse heart tissue lysate 9500ug.



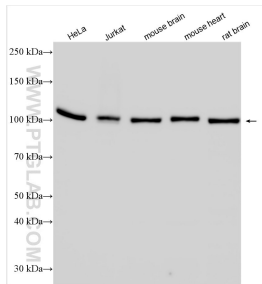
Immunohistochemical analysis of paraffin-embedded human lung cancer tissue slide using 15440-1-AP (LONP1 antibody) at dilution of 1:200 (under 10x lens. Heat mediated antigen retrieval with Tris-EDTA buffer (pH 9.0).



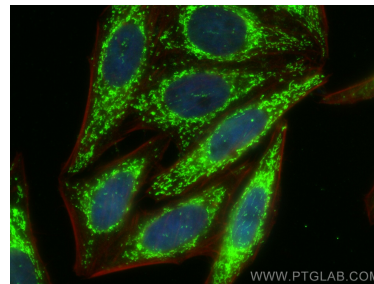
Immunohistochemical analysis of paraffin-embedded human lung cancer tissue slide using 15440-1-AP (LONP1 antibody) at dilution of 1:200 (under 40x lens. Heat mediated antigen retrieval with Tris-EDTA buffer (pH 9.0).



Immunofluorescent analysis of (4% PFA) fixed HepG2 cells using 15440-1-AP (LONP1 antibody) at dilution of 1:50 and CoraLite488-Conjugated AffiniPure Goat Anti-Rabbit IgG(H+L).



Various lysates were subjected to SDS PAGE followed by western blot with 15440-1-AP (LONP1 antibody) at dilution of 1:6000 incubated at room temperature for 1.5 hours.



Immunofluorescent analysis of (4% PFA) fixed HepG2 cells using LONP1 antibody (15440-1-AP) at dilution of 1:200 and CoraLite@488-Conjugated AffiniPure Goat Anti-Rabbit IgG(H+L), CL594-Phalloidin (red).