

À des fins de recherche uniquement

Anticorps Polyclonal de lapin anti-MARK2



Numéro de catalogue: 15492-1-AP

Phare

11 Publications

Informations de base

Numéro de catalogue:

15492-1-AP

Taille:

150ul, Concentration: 450 µg/ml by Nanodrop;

Hôte:

Lapin

Isotype:

IgG

Immunogen Catalog Number:

AG7884

Numéro d'acquisition GenBank:

BC008771

Identification du gène (NCBI):

2011

Nom complet:

MAP/microtubule affinity-regulating kinase 2

MW calculé

88 kDa

MW observés:

77-90 kDa

Méthode de purification:

Purification par affinité contre l'antigène

Dilutions recommandées:

WB 1:500-1:2000

IP 0.5-4.0 µg for IP and 1:500-1:2000 for WB

IHC 1:200-1:800

Applications

Applications testées:

IHC, IP, WB, ELISA

Demandes citées:

IF, IP, WB

Spécificité de l'espèce:

Humain, rat, souris

Espèces citées:

Humain, rat, souris

Contrôles positifs:

WB : tissu cérébral de souris, tissu cérébral de rat

IP : tissu cérébral de rat,

IHC : tissu de cancer de la prostate humain, tissu cérébral humain, tissu testiculaire de souris

Remarque-IHC: il est suggéré de démasquer l'antigène avec un tampon de TE buffer pH 9,0; (*) À défaut, le démasquage de l'antigène peut être effectué avec un tampon citrate pH 6,0.

Informations générales

MARK2 is also named as EMK1(ELKL motif kinase 1), Par1b and belongs to the CAMK Ser/Thr protein kinase family. Par1b/MARK2 plays a critical role in neuronal polarity in the process of axon specification from multiple candidate neurites using primary cultures of mammalian hippocampal neurons(PMID:20194617). It has 16 isoforms produced by alternative promoter usage and alternative splicing with the molecular mass of 77-90kDa and can exist as a dimer(PMID:16803889).

Publications notables

Autrice	Pubmed ID	Journal	Application
Tsz-Yin Chan	34504101	Nat Commun	IP
Lingling Wang	33094326	Endocrinology	WB
Ying Gao	27815338	FASEB J	WB

Stockage

Stockage:

Stocker à -20°C. Stable pendant un an après l'expédition.

Tampon de stockage:

PBS avec azoture de sodium à 0,02 % et glycérol à 50 % pH 7,3

L'aliquotage n'est pas nécessaire pour le stockage à -20C

*** Les 20ul contiennent 0,1% de BSA.

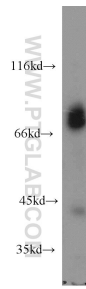
For technical support and original validation data for this product please contact:

T: 1 (888) 4PTGLAB (1-888-478-4522) (toll free in USA), or 1(312) 455-8498 (outside USA)

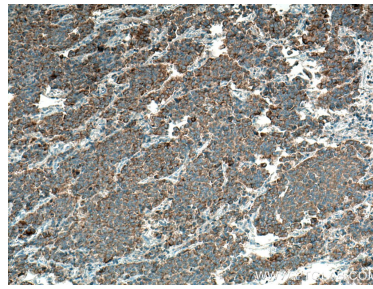
E: proteintech@ptglab.com
W: ptglab.com

This product is exclusively available under Proteintech Group brand and is not available to purchase from any other manufacturer.

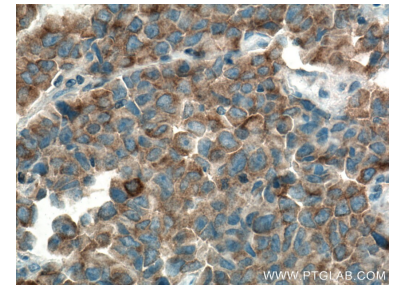
Données de validation sélectionnées



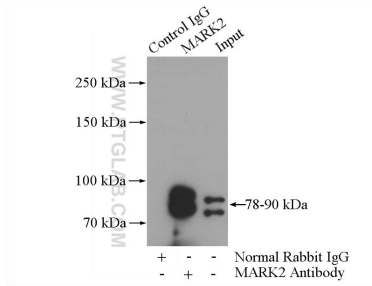
mouse brain tissue were subjected to SDS PAGE followed by western blot with 15492-1-AP (MARK2 antibody) at dilution of 1:1000 incubated at room temperature for 1.5 hours.



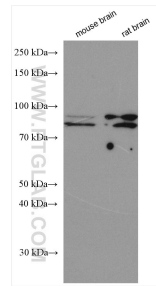
Immunohistochemical analysis of paraffin-embedded human prostate cancer tissue slide using 15492-1-AP (MARK2 antibody) at dilution of 1:600 (under 10x lens). Heat mediated antigen retrieval with Tris-EDTA buffer (pH 9.0).



Immunohistochemical analysis of paraffin-embedded human prostate cancer tissue slide using 15492-1-AP (MARK2 antibody) at dilution of 1:600 (under 40x lens). Heat mediated antigen retrieval with Tris-EDTA buffer (pH 9.0).



IP Result of anti-MARK2 (IP:15492-1-AP, 4ug; Detection:15492-1-AP 1:1000) with rat brain tissue lysate 4000ug.



Various lysates were subjected to SDS PAGE followed by western blot with 15492-1-AP (MARK2 antibody) at dilution of 1:4000 incubated at room temperature for 1.5 hours.