

À des fins de recherche uniquement

Anticorps Polyclonal de lapin anti-Pancreatic Polypeptide



Numéro de catalogue: 15493-1-AP

1 Publications

Informations de base

Numéro de catalogue:

15493-1-AP

Taille:

150ul, Concentration: 500 µg/ml by Nanodrop;

Hôte:

Lapin

Isotype:

IgG

Immunogen Catalog Number:

AG7886

Numéro d'acquisition GenBank:

BC032225

Identification du gène (NCBI):

5539

Nom complet:

pancreatic polypeptide

MW calculé

10 kDa

Méthode de purification:

Purification par affinité contre l'antigène

Dilutions recommandées:

IHC 1:1000-1:4000

IF 1:50-1:500

Applications

Applications testées:

FC, IF, IHC, ELISA

Demandes citées:

IHC

Spécificité de l'espèce:

Humain, rat, souris

Espèces citées:

souris

Remarque-IHC: il est suggéré de démasquer l'antigène avec un tampon de TE buffer pH 9,0; (*) À défaut, le démasquage de l'antigène peut être effectué avec un tampon citrate pH 6,0.

Contrôles positifs:

IHC : tissu pancréatique de souris,

IF : tissu pancréatique de rat, cellules HepG2

Informations générales

Publications notables

Autrice	Pubmed ID	Journal	Application
M Honarpisheh	36685665	Transpl Int	IHC

Stockage

Stockage:

Stocker à -20°C. Stable pendant un an après l'expédition.

Tampon de stockage:

PBS avec azote de sodium à 0,02 % et glycérol à 50 % pH 7,3

L'aliquotage n'est pas nécessaire pour le stockage à -20C

*** Les 20ul contiennent 0,1% de BSA.

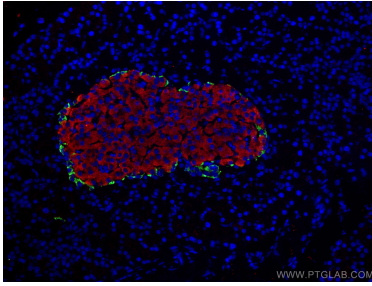
For technical support and original validation data for this product please contact:

T: 1 (888) 4PTGLAB (1-888-478-4522) (toll free in USA), or 1(312) 455-8498 (outside USA)

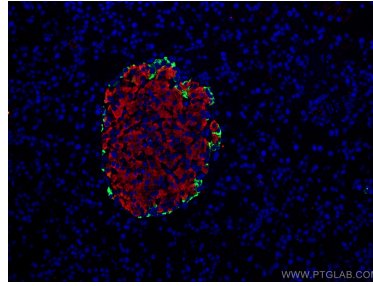
E: proteintech@ptglab.com
W: ptglab.com

This product is exclusively available under Proteintech Group brand and is not available to purchase from any other manufacturer.

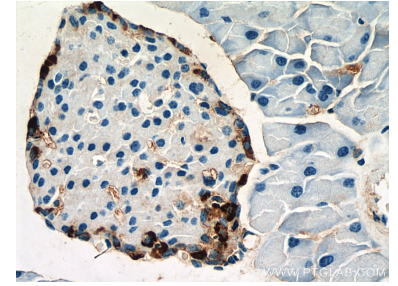
Données de validation sélectionnées



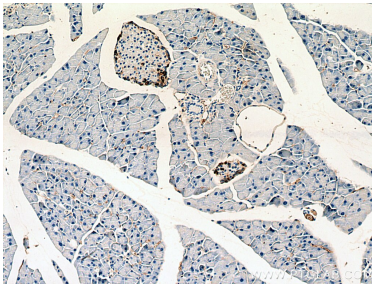
Immunofluorescent analysis of (4% PFA) fixed rat pancreas tissue using Pancreatic Polypeptide antibody (15493-1-AP) at dilution of 1:200 and CoraLite®488-Conjugated AffiniPure Goat Anti-Rabbit IgG(H+L), Pancreatic Polypeptide antibody (15493-1-AP, green) stained on PP cells in rat pancreas islet. Glucagon antibody (67286-1-Ig, Clone: 2A8G1, red) stained on a cells in rat pancreas islet.



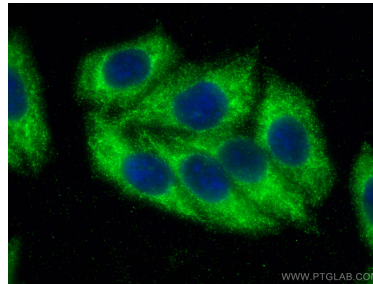
Immunofluorescent analysis of (4% PFA) fixed rat pancreas tissue using Pancreatic Polypeptide antibody (15493-1-AP) at dilution of 1:200 and CoraLite®488-Conjugated AffiniPure Goat Anti-Rabbit IgG(H+L), Pancreatic Polypeptide antibody (15493-1-AP) (green) stained on PP cells in rat pancreas islet. Glucagon antibody (67286-1-Ig, Clone: 2A8G1, red) stained on a cells in rat pancreas islet.



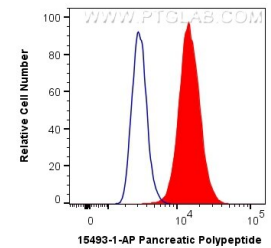
Immunohistochemical analysis of paraffin-embedded mouse pancreas tissue slide using 15493-1-AP (Pancreatic Polypeptide antibody) at dilution of 1:2000 (under 40x Lens). Heat mediated antigen retrieval with Tris-EDTA buffer (pH 9.0).



Immunohistochemical analysis of paraffin-embedded mouse pancreas tissue slide using 15493-1-AP (Pancreatic Polypeptide antibody) at dilution of 1:2000 (under 10x lens). Heat mediated antigen retrieval with Tris-EDTA buffer (pH 9.0).



Immunofluorescent analysis of (-20°C Ethanol) fixed HepG2 cells using Pancreatic Polypeptide antibody (15493-1-AP) at dilution of 1:200 and CoraLite®488-Conjugated AffiniPure Goat Anti-Rabbit IgG(H+L).



1X10⁶ HepG2 cells were intracellularly stained with 0.4 ug Anti-Human Pancreatic Polypeptide (15493-1-AP) and CoraLite®488-Conjugated AffiniPure Goat Anti-Rabbit IgG(H+L) at dilution 1:1000 (red), or 0.4 ug Control Antibody. Cells were fixed with 4% PFA and permeabilized with Flow Cytometry Perm Buffer (PF00011-C).