

À des fins de recherche uniquement

Anticorps Polyclonal de lapin anti-DISC1-long-specific



Numéro de catalogue: 15500-1-AP

1 Publications

Informations de base

Numéro de catalogue:

15500-1-AP

Taille:

150ul, Concentration: 600 µg/ml by Nanodrop and 400 µg/ml by Bradford method using BSA as the standard;

Hôte:

Lapin

Isotype:

IgG

Numéro d'acquisition GenBank:

NM_018662

Identification du gène (NCBI):

27185

Nom complet:

disrupted in schizophrenia 1

MW calculé

95 kDa

Méthode de purification:

Purification par affinité contre l'antigène

Dilutions recommandées:

IHC 1:20-1:200

IF 1:20-1:200

Applications

Applications testées:

IF, IHC, ELISA

Demandes citées:

WB

Spécificité de l'espèce:

Humain, souris

Espèces citées:

souris

Contrôles positifs:

IHC : tissu cérébral humain,

IF : cellules MDCK,

Remarque-IHC: il est suggéré de démasquer l'antigène avec un tampon de TE buffer pH 9.0; (*) À défaut, 'le démasquage de l'antigène peut être 'effectué avec un tampon citrate pH 6,0.

Informations générales

DISC1, also named as KIAA0457, is identified as the sole gene whose ORF is truncated and cosegregates with major mental illnesses in a Scottish family. DISC1 may be implicated in psychiatric conditions in other populations than the unique Scottish family. It is involved in the regulation of multiple aspects of embryonic and adult neurogenesis. DISC1 is required for neural progenitor proliferation in the ventral/subventral zone during embryonic brain development and in the adult dentate gyrus of the hippocampus. It plays a role, together with PCNT, in the microtubule network formation. In WB, DISC1 has some MW such as 34kd(PMID:18620078);75-85kd and 95-100kd(PMID:15657124). DISC1 isoforms have distinct developmental patterns of expression. This antibody is against C-terminal of DISC1, binding full length protein specifically.

Publications notables

Autrice	Pubmed ID	Journal	Application
Anna Sancho-Balsells	32477064	Front Cell Neurosci	WB

Stockage

Stockage:

Stocker à -20°C. Stable pendant un an après l'expédition.

Tampon de stockage:

PBS avec azoture de sodium à 0,02 % et glycérol à 50 % pH 7,3

L'aliquotage n'est pas nécessaire pour le stockage à -20C

*** Les 20ul contiennent 0,1% de BSA.

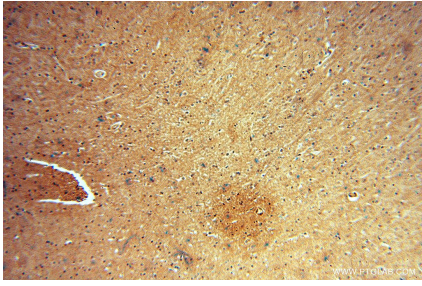
For technical support and original validation data for this product please contact:

T: 1 (888) 4PTGLAB (1-888-478-4522) (toll free in USA), or 1(312) 455-8498 (outside USA)

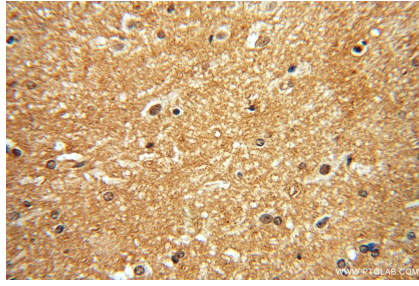
E: proteintech@ptglab.com
W: ptglab.com

This product is exclusively available under Proteintech Group brand and is not available to purchase from any other manufacturer.

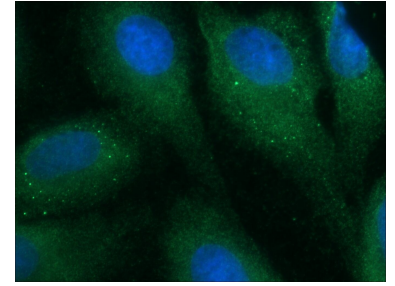
Données de validation sélectionnées



Immunohistochemical analysis of paraffin-embedded human brain using 15500-1-AP (DISC1-long-specific antibody) at dilution of 1:50 (under 10x lens).



Immunohistochemical analysis of paraffin-embedded human brain using 15500-1-AP (DISC1-long-specific antibody) at dilution of 1:50 (under 40x lens).



Immunofluorescent analysis of MDCK cells using 15500-1-AP (DISC1-long-specific antibody) at dilution of 1:50 and Alexa Fluor 488-conjugated AffiniPure Goat Anti-Rabbit IgG(H+L).