

À des fins de recherche uniquement

Anticorps Polyclonal de lapin anti-transgelin/SM22-specific



Numéro de catalogue: 15502-1-AP

3 Publications

Informations de base

Numéro de catalogue:

15502-1-AP

Numéro d'acquisition GenBank:

NM_003186

Méthode de purification:

Purification par affinité contre l'antigène

Taille:

150ul, Concentration: 280 µg/ml by Nanodrop and 167 µg/ml by Bradford method using BSA as the standard;

Identification du gène (NCBI):

6876

Dilutions recommandées:

WB 1:300-1:600
IHC 1:100-1:4000

Hôte:

Lapin

MW calculé

22 kDa

Isotype:

IgG

MW observés:

22-25 kDa

Applications

Applications testées:

IHC, WB, ELISA

Contrôles positifs:

WB : tissu de côlon de souris,

Demandes citées:

WB

IHC : tissu cardiaque humain, tissu de côlon humain

Spécificité de l'espèce:

Humain, rat, souris

Espèces citées:

Humain, souris

Remarque-IHC: il est suggéré de démasquer l'antigène avec un tampon de TE buffer pH 9,0; (*) À défaut, le démasquage de l'antigène peut être effectué avec un tampon citrate pH 6,0.

Informations générales

The transgelin family is a group of proteins that belong to 22 kDa actin-related corpin superfamily. Of all three isoforms, transgelin 1 is the best characterized. Transgelin 1, also known as SM22alpha, is a specific marker for differentiated smooth muscle cells. Transgelin 2, also known as SM22 beta, is expressed by both smooth muscle and non-smooth muscle cells in a temporally and spatially regulated pattern. Transgelin 3, also known as NP25, is only found in highly differentiated neuronal cells. This antibody is specific to transgelin 1. It does not cross-react with transgelin 2 or 3.

Publications notables

Autrice	Pubmed ID	Journal	Application
Weitie Wang	33510768	Front Genet	WB
Fang He	35178409	Front Med (Lausanne)	WB
B. Paul Herring	28039430	Physiol Genomics	WB

Stockage

Stockage:

Stocker à -20°C. Stable pendant un an après l'expédition.

Tampon de stockage:

PBS avec azoture de sodium à 0,02 % et glycérol à 50 % pH 7,3

L'aliquotage n'est pas nécessaire pour le stockage à -20C

*** Les 20ul contiennent 0,1% de BSA.

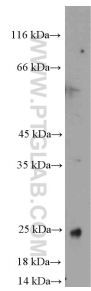
For technical support and original validation data for this product please contact:

T: 1 (888) 4PTGLAB (1-888-478-4522) (toll free in USA), or 1(312) 455-8498 (outside USA)

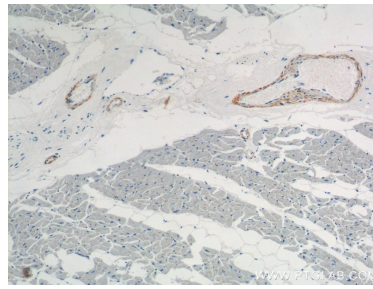
E: proteintech@ptglab.com
W: ptglab.com

This product is exclusively available under Proteintech Group brand and is not available to purchase from any other manufacturer.

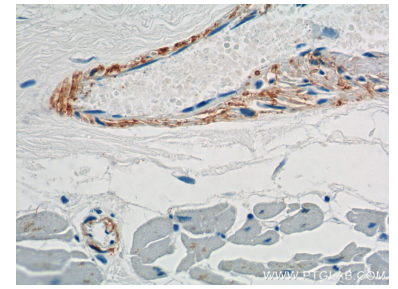
Données de validation sélectionnées



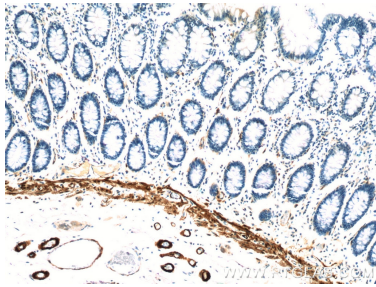
mouse colon tissue were subjected to SDS PAGE followed by western blot with 15502-1-AP (transgelin/SM22-specific antibody at dilution of 1:600 incubated at room temperature for 1.5 hours.



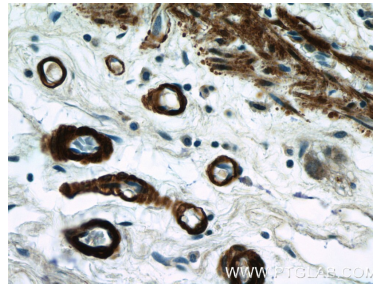
Immunohistochemical analysis of paraffin-embedded human heart tissue slide using 15502-1-AP (transgelin/SM22-specific antibody at dilution of 1:2000 (under 10x lens).



Immunohistochemical analysis of paraffin-embedded human heart tissue slide using 15502-1-AP (transgelin/SM22-specific antibody at dilution of 1:2000 (under 40x lens).



Immunohistochemical analysis of paraffin-embedded human colon tissue slide using 15502-1-AP (transgelin/SM22-specific antibody at dilution of 1:200 (under 10x lens).



Immunohistochemical analysis of paraffin-embedded human colon tissue slide using 15502-1-AP (transgelin/SM22-specific antibody at dilution of 1:200 (under 40x lens).