

À des fins de recherche uniquement

Anticorps Polyclonal de lapin anti-KISS1R-Specific



Numéro de catalogue: 15505-1-AP

4 Publications

Informations de base

Numéro de catalogue:

15505-1-AP

Taille:

150ul, Concentration: 500 µg/ml by Nanodrop;

Hôte:

Lapin

Isotype:

IgG

Numéro d'acquisition GenBank:

NM_032551

Identification du gène (NCBI):

84634

Nom complet:

KISS1 receptor

MW calculé

43 kDa

MW observés:

75 kDa, 43-45 kDa

Méthode de purification:

Purification par affinité contre l'antigène

Dilutions recommandées:

WB 1:500-1:3000

IHC 1:50-1:500

IF 1:10-1:100

Applications

Applications testées:

FC, IF, IHC, WB, ELISA

Demandes citées:

IF, WB

Spécificité de l'espèce:

Humain, souris

Espèces citées:

bovin, Humain

Contrôles positifs:

WB : tissu de cervelet de souris, cellules MCF-7, cellules SH-SY5Y

IHC : tissu de cervelet de souris,

IF : cellules MCF-7, cellules HeLa, cellules HepG2

Remarque-IHC: il est suggéré de démasquer l'antigène avec un tampon de TE buffer pH 9,0; (*) À défaut, le démasquage de l'antigène peut être effectué avec un tampon citrate pH 6,0.

Informations générales

KISS1R is the receptor for metastin (kisspeptin-54, 13, 14, 10), C-terminally amidated peptides of KISS-1. KISS-1 is a metastasis suppressor protein that suppresses metastases in malignant melanomas and in some other carcinomas without affecting tumorigenicity. The metastasis suppressor properties may be mediated in part by cell cycle arrest and induction of apoptosis in malignant cells. The receptor is also probably involved in the regulation and fine-tuning of trophoblast invasion generated by the trophoblast itself. Analysis of the transduction pathways activated by the receptor identifies coupling to phospholipase C and intracellular calcium release through pertussis toxin-insensitive G(q) proteins.

Publications notables

Autrice	Pubmed ID	Journal	Application
Yanwei Li	31621904	J Cell Physiol	
Tianwei Chen	36453019	Mol Oncol	WB
Jianhua Sun	29206176	Int J Mol Sci	WB

Stockage

Stockage:

Stocker à -20°C. Stable pendant un an après l'expédition.

Tampon de stockage:

PBS avec azoture de sodium à 0,02 % et glycérol à 50 % pH 7,3

L'aliquotage n'est pas nécessaire pour le stockage à -20C

*** Les 20ul contiennent 0,1% de BSA.

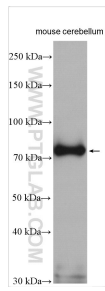
For technical support and original validation data for this product please contact:

T: 1 (888) 4PTGLAB (1-888-478-4522) (toll free in USA), or 1(312) 455-8498 (outside USA)

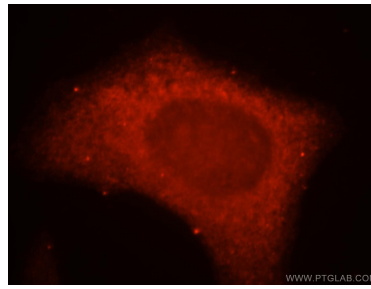
E: proteintech@ptglab.com
W: ptglab.com

This product is exclusively available under Proteintech Group brand and is not available to purchase from any other manufacturer.

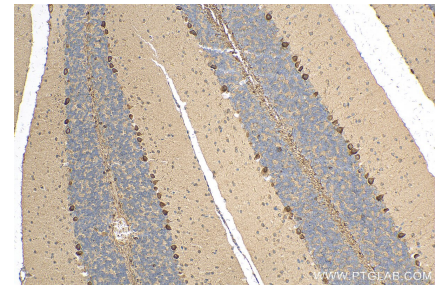
Données de validation sélectionnées



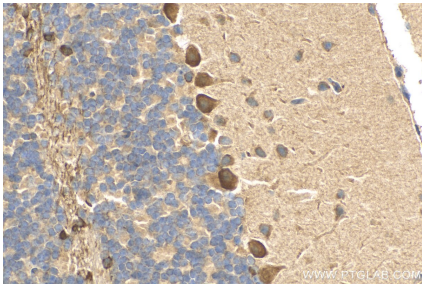
mouse cerebellum tissue were subjected to SDS PAGE followed by western blot with 15505-1-AP (KISS1R-Specific antibody) at dilution of 1:1500 incubated at room temperature for 1.5 hours.



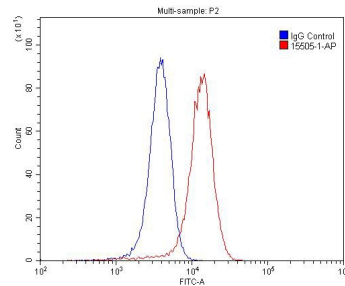
Immunofluorescent analysis of MCF-7 cells, using KISS1R antibody 15505-1-AP at 1:25 dilution and Rhodamine-labeled goat anti-rabbit IgG (red).



Immunohistochemical analysis of paraffin-embedded mouse cerebellum tissue slide using 15505-1-AP (KISS1R-Specific antibody) at dilution of 1:200 (under 10x lens). Heat mediated antigen retrieval with Tris-EDTA buffer (pH 9.0).



Immunohistochemical analysis of paraffin-embedded mouse cerebellum tissue slide using 15505-1-AP (KISS1R-Specific antibody) at dilution of 1:200 (under 40x lens). Heat mediated antigen retrieval with Tris-EDTA buffer (pH 9.0).



1X10⁶ SH-SY5Y cells were stained with 0.2ug KISS1R-Specific antibody (15505-1-AP, red) and control antibody (blue). Fixed with 4% PFA blocked with 3% BSA (30 min). Alexa Fluor 488-conjugated AffiniPure Goat Anti-Rabbit IgG(H+L) with dilution 1:1500.