

À des fins de recherche uniquement

# Anticorps Polyclonal de lapin anti-Transgelin-2-specific



Numéro de catalogue: 15508-1-AP

Phare

6 Publications

## Informations de base

Numéro de catalogue:

15508-1-AP

Numéro d'acquisition GenBank:

NM\_003564

Méthode de purification:

Purification par affinité contre l'antigène

Taille:

150ul, Concentration: 400 µg/ml by Nanodrop and 260 µg/ml by Bradford method using BSA as the standard;

Identification du gène (NCBI):

8407

Dilutions recommandées:

WB 1:500-1:1000  
IP 0.5-4.0 ug for IP and 1:500-1:1000 for WB  
IHC 1:20-1:200  
IF 1:10-1:100

Hôte:

Lapin

MW calculé

22 kDa

Isotype:

IgG

MW observés:

22 kDa

## Applications

Applications testées:

FC, IF, IHC, IP, WB, ELISA

Contrôles positifs:

WB : cellules HeLa, cellules HEK-293

Demandes citées:

IF, IHC, IP, WB

IP : cellules L02,

Spécificité de l'espèce:

Humain

IHC : tissu rénal humain, tissu hépatique humain

Espèces citées:

Humain

IF : cellules HepG2,

**Remarque-IHC: il est suggéré de démasquer l'antigène avec un tampon de TE buffer pH 9,0; (\*) À défaut, le démasquage de l'antigène peut être effectué avec un tampon citrate pH 6,0.**

## Informations générales

The transgelin family is a group of proteins that belong to 22 kDa actin-related corpin superfamily. Of all three isoforms, transgelin 1 is the best characterized. Transgelin 1, also known as SM22 alpha, is a specific marker for differentiated smooth muscle cells. Transgelin 2, also known as SM22 beta, is expressed by both smooth muscle and non-smooth muscle cells in a temporally and spatially regulated pattern. Transgelin 3, also known as NP25, is only found in highly differentiated neuronal cells. This antibody can bind transgelin 2 specifically, but not transgelin 1 or 3.

## Publications notables

Autrice	Pubmed ID	Journal	Application
Yan-Yan Du	26414725	J Gastroenterol Hepatol	WB, IHC
Yonglian Huang	34530821	Cancer Cell Int	WB
Xiao Yuan Y	23056327	PLoS One	WB, IF

## Stockage

Stockage:

Stocker à -20°C. Stable pendant un an après l'expédition.

Tampon de stockage:

PBS avec azoture de sodium à 0,02 % et glycérol à 50 % pH 7,3

L'aliquotage n'est pas nécessaire pour le stockage à -20C

\*\*\* Les 20ul contiennent 0,1% de BSA.

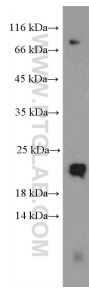
For technical support and original validation data for this product please contact:

T: 1 (888) 4PTGLAB (1-888-478-4522) (toll free in USA), or 1(312) 455-8498 (outside USA)

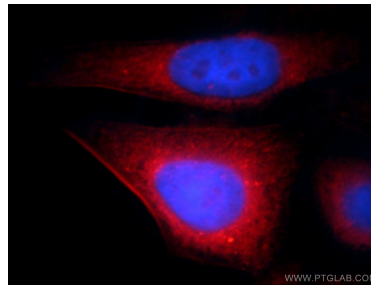
E: proteintech@ptglab.com  
W: ptglab.com

This product is exclusively available under Proteintech Group brand and is not available to purchase from any other manufacturer.

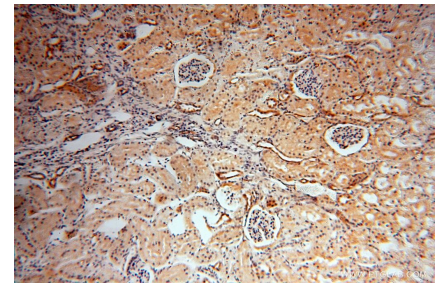
## Données de validation sélectionnées



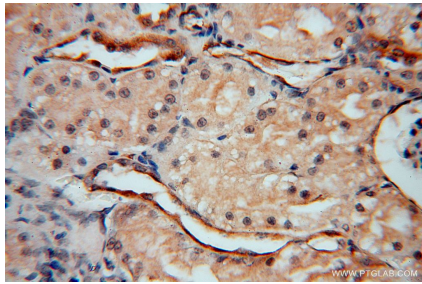
HeLa cells were subjected to SDS PAGE followed by western blot with 15508-1-AP (Transgelin-2-specific antibody) at dilution of 1:600 incubated at room temperature for 1.5 hours.



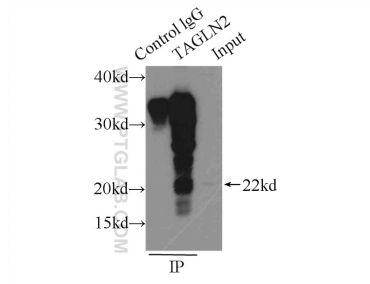
Immunofluorescent analysis of HepG2 cells using 15508-1-AP (Transgelin-2-specific antibody) at dilution of 1:25 and Rhodamine-Goat anti-Rabbit IgG.



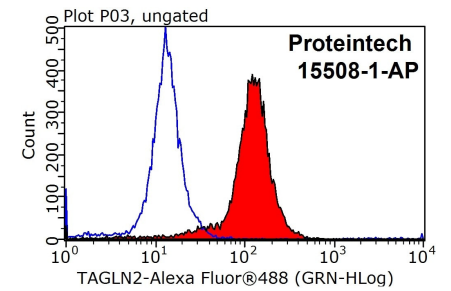
Immunohistochemical analysis of paraffin-embedded human kidney using 15508-1-AP (Transgelin-2-specific antibody) at dilution of 1:50 (under 10x lens).



Immunohistochemical analysis of paraffin-embedded human kidney using 15508-1-AP (Transgelin-2-specific antibody) at dilution of 1:50 (under 40x lens).



IP Result of anti-Transgelin-2-specific (IP:15508-1-AP, 3ug; Detection:15508-1-AP 1:500) with L02 cells lysate 1000ug.



1X10<sup>6</sup> HepG2 cells were stained with 0.2ug Transgelin-2-specific antibody (15508-1-AP, red) and control antibody (blue). Fixed with 90% MeOH blocked with 3% BSA (30 min). Alexa Fluor 488-conjugated AffiniPure Goat Anti-Rabbit IgG(H+L) with dilution 1:1000.