

À des fins de recherche uniquement

Anticorps Polyclonal de lapin anti-Cardiac Troponin T



Numéro de catalogue: 15513-1-AP

36 Publications

Informations de base

Numéro de catalogue:

15513-1-AP

Taille:

150ul, Concentration: 700 µg/ml by Nanodrop;

Hôte:

Lapin

Isotype:

IgG

Immunogen Catalog Number:

AG7716

Numéro d'acquisition GenBank:

BC002653

Identification du gène (NCBI):

7139

Nom complet:

troponin T type 2 (cardiac)

MW calculé

36 kDa

MW observés:

34-40 kDa

Méthode de purification:

Purification par affinité contre l'antigène

Dilutions recommandées:

WB 1:500-1:2000

IHC 1:50-1:500

IF 1:50-1:500

Applications

Applications testées:

IF, IHC, WB, ELISA

Demandes citées:

FC, IF, IHC, WB

Spécificité de l'espèce:

Humain, rat, souris

Espèces citées:

Humain, rat, souris

Contrôles positifs:

WB : tissu cardiaque de souris, tissu cardiaque de rat, tissu cardiaque humain, tissu de muscle squelettique de souris

IHC : tissu cardiaque de souris, tissu de muscle squelettique de souris

IF : tissu cardiaque de souris,

Remarque-IHC: il est suggéré de démasquer l'antigène avec un tampon de TE buffer pH 9,0; (*) À défaut, le démasquage de l'antigène peut être effectué avec un tampon citrate pH 6,0.

Informations générales

Publications notables

Autrice	Pubmed ID	Journal	Application
Jie Shen	36085540	Hum Cell	WB,IF
XiaoLin Sun	32963547	Stem Cells Int	FC,IF
Xueyi Weng	36266658	J Nanobiotechnology	IF

Stockage

Stockage:

Stocker à -20°C. Stable pendant un an après l'expédition.

Tampon de stockage:

PBS avec azoture de sodium à 0,02 % et glycérol à 50 % pH 7,3

L'aliquotage n'est pas nécessaire pour le stockage à -20C

*** Les 20ul contiennent 0,1% de BSA.

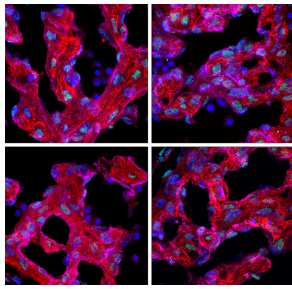
For technical support and original validation data for this product please contact:

T: 1 (888) 4PTGLAB (1-888-478-4522) (toll free in USA), or 1(312) 455-8498 (outside USA)

E: proteintech@ptglab.com
W: ptglab.com

This product is exclusively available under Proteintech Group brand and is not available to purchase from any other manufacturer.

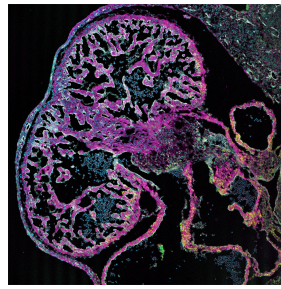
Données de validation sélectionnées



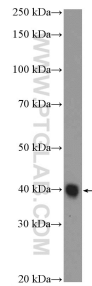
Frozen tissue section of embryonic mouse heart (E12.5) was stained for cardiac troponin-T/cTnT (red, Cat. No 15513-1-AP), CD31/PECAM-1 (magenta), and Arl13B (green, Cat. No 66739-1-Ig) with DAPI as a counterstain for visualizing the nucleus (blue). cTnT stains cardiomyocytes and was visualized with an Alexa Fluor 555 secondary antibody. CD31 stains endocardial/endothelial cells and was visualized with an Alexa Fluor 647 secondary



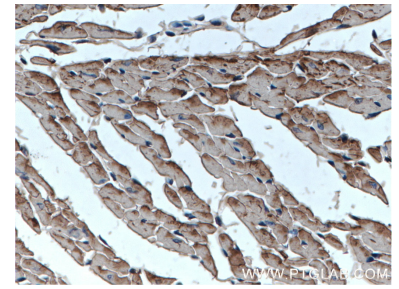
Immunohistochemical analysis of paraffin-embedded mouse heart tissue slide using 15513-1-AP (Cardiac Troponin T antibody) at dilution of 1:200 (under 10x lens). Heat mediated antigen retrieval with Tris-EDTA buffer (pH 9.0).



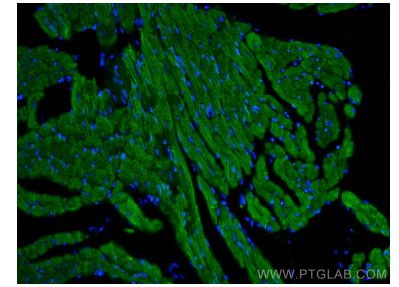
Frozen tissue section of embryonic mouse heart (E12.5) was stained for cardiac troponin-T/cTnT (magenta, Cat. No 15513-1-AP), CD31/PECAM-1 (white), and Arl13B (yellow, Cat. No 66739-1-Ig) with DAPI as a counterstain for visualizing the nucleus (cyan). cTnT stains cardiomyocytes and was visualized with an Alexa Fluor 555 secondary antibody and pseudocolored to magenta. CD31 stains endocardial/endothelial cells and was visualized with an Alexa Fluor 647 secondary



mouse heart tissue were subjected to SDS PAGE followed by western blot with 15513-1-AP (Cardiac Troponin T antibody) at dilution of 1:1000 incubated at room temperature for 1.5 hours.



Immunohistochemical analysis of paraffin-embedded mouse heart tissue slide using 15513-1-AP (Cardiac Troponin T antibody) at dilution of 1:200 (under 40x lens). Heat mediated antigen retrieval with Tris-EDTA buffer (pH 9.0).



Immunofluorescent analysis of (4% PFA) fixed mouse heart tissue using Cardiac Troponin T antibody (15513-1-AP) at dilution of 1:200 and CoraLite@488-Conjugated AffiniPure Goat Anti-Rabbit IgG(H+L).