

À des fins de recherche uniquement

Anticorps Polyclonal de lapin anti-Beta Galactosidase



Numéro de catalogue: 15518-1-AP

26 Publications

Informations de base

Numéro de catalogue: 15518-1-AP	Numéro d'acquisition GenBank: BC007493	Méthode de purification: Purification par affinité contre l'antigène
Taille: 150ul , Concentration: 450 µg/ml by Nanodrop;	Identification du gène (NCBI): 2720	Dilutions recommandées: WB 1:500-1:1000 IHC 1:20-1:200 IF 1:50-1:500
Hôte: Lapin	Nom complet: galactosidase, beta 1	
Isotype: IgG	MW calculé 76 kDa	
Immunogen Catalog Number: AG7792	MW observés: 67 kDa	

Applications

Applications testées:

IF, IHC, WB, ELISA

Demandes citées:

IF, IHC, IP, WB

Spécificité de l'espèce:

Humain, souris

Espèces citées:

bovin, Humain, rat, souris

Contrôles positifs:

WB : cellules SH-SY5Y,

IHC : tissu de gliome humain, tissu de cancer du foie humain

IF : cellules HeLa,

Remarque-IHC: il est suggéré de démasquer l'antigène avec un tampon de TE buffer pH 9,0; (*) À défaut, le démasquage de l'antigène peut être effectué avec un tampon citrate pH 6,0.

Informations générales

GLB1(Beta-galactosidase) is also named as ELNR1 or Lactase. It cleaves beta-linked terminal galactosyl residues from gangliosides, glycoproteins, and glycosaminoglycans. This protein is identical to the elastin-binding protein (EBP), a major component of the nonintegrin cell surface receptor complex expressed in fibroblasts, smooth muscle cells, chondroblasts, leukocytes, and certain cancer cell types. Defects in GLB1 are the cause of GM1-gangliosidosis type 1 (GM1G1), GM1-gangliosidosis type 2 (GM1G2), GM1-gangliosidosis type 3 (GM1G3) and mucopolysaccharidosis type 4B (MPS4B). GLB1 is synthesized as an 85-kDa precursor that is C-terminally processed into a 64-66 kDa mature form and the released ~20-kDa proteolytic fragment was thought to be degraded (PMID: 10744681). GLB1 has 3 isoforms with MW of 76 kDa, 73 kDa and 61 kDa.

Publications notables

Autrice	Pubmed ID	Journal	Application
Chao Cheng	36121292	Appl Immunohistochem Mol Morphol	WB,IHC
Wenyou Zhang	36144658	Molecules	IF
Jian Tian	33144900	Pain Res Manag	IHC

Stockage

Stockage:

Stocker à -20°C. Stable pendant un an après l'expédition.

Tampon de stockage:

PBS avec azoture de sodium à 0,02 % et glycérol à 50 % pH 7,3

L'aliquote n'est pas nécessaire pour le stockage à -20C

*** Les 20ul contiennent 0,1% de BSA.

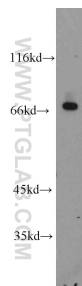
For technical support and original validation data for this product please contact:

T: 1 (888) 4PTGLAB (1-888-478-4522) (toll free in USA), or 1(312) 455-8498 (outside USA)

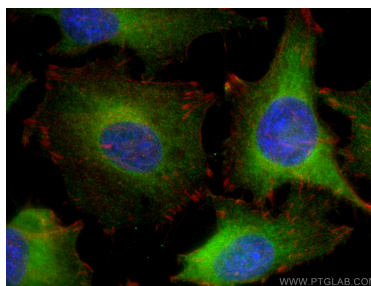
E: proteintech@ptglab.com
W: ptglab.com

This product is exclusively available under Proteintech Group brand and is not available to purchase from any other manufacturer.

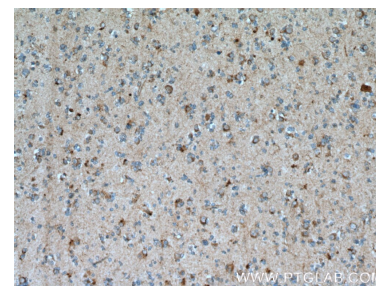
Données de validation sélectionnées



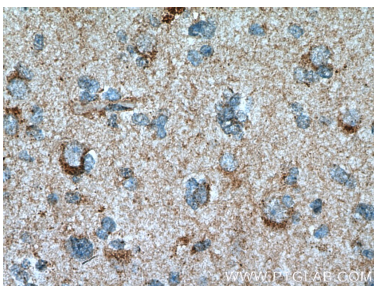
SH-SY5Y cells were subjected to SDS PAGE followed by western blot with 15518-1-AP (GLB1 antibody) at dilution of 1:400 incubated at room temperature for 1.5 hours.



Immunofluorescent analysis of (-20°C Ethanol) fixed HeLa cells using Beta Galactosidase antibody (15518-1-AP) at dilution of 1:200 and CoraLite@488-Conjugated AffiniPure Goat Anti-Rabbit IgG(H+L), CL594-Phalloidin (red).



Immunohistochemical analysis of paraffin-embedded human gliomas tissue slide using 15518-1-AP (Beta galactosidase Antibody) at dilution of 1:50 (under 10x lens). Heat mediated antigen retrieval with Tris-EDTA buffer (pH 9.0).



Immunohistochemical analysis of paraffin-embedded human gliomas tissue slide using 15518-1-AP (Beta galactosidase Antibody) at dilution of 1:50 (under 40x lens). Heat mediated antigen retrieval with Tris-EDTA buffer (pH 9.0).