

À des fins de recherche uniquement

Anticorps Polyclonal de lapin anti-MSH2



Numéro de catalogue: 15520-1-AP

Phare

23 Publications

Informations de base

Numéro de catalogue:
15520-1-AP

Taille:
150ul, Concentration: 400 µg/ml by Nanodrop and 233 µg/ml by Bradford method using BSA as the standard;

Hôte:
Lapin

Isotype:
IgG

Immunogen Catalog Number:
AG7835

Numéro d'acquisition GenBank:
BC021566

Identification du gène (NCBI):
4436
Nom complet:
mutS homolog 2, colon cancer, nonpolyposis type 1 (E. coli)

MW calculé:
105 kDa

MW observés:
100 kDa-105 kDa

Méthode de purification:
Purification par affinité contre l'antigène

Dilutions recommandées:
WB 1:500-1:2000
IP 0.5-4.0 ug for IP and 1:500-1:1000 for WB
IHC 1:50-1:500
IF 1:50-1:500

Applications

Applications testées:
FC, IF, IHC, IP, WB, ELISA

Demandes citées:
IF, IHC, WB

Spécificité de l'espèce:
Humain

Espèces citées:
Humain, souris

Remarque-IHC: il est suggéré de démasquer l'antigène avec un tampon de TE buffer pH 9,0; (*) A défaut, le démasquage de l'antigène peut être effectué avec un tampon citrate pH 6,0.

Contrôles positifs:

WB : cellules HeLa, cellules Caco-2, cellules SW480

IP : cellules HeLa,

IHC : tissu de cancer de l'estomac humain, tissu amygdalien humain

IF : cellules HeLa,

Informations générales

MSH2, named for its homologous to the E.coli MutS gene, takes part in DNA mismatch repair(MMR) to maintain the stability of DNA. MSH2 contains a helix-turn-helix domain, which responds for binding to DNA. Also, MSH2 has a direct role in mutation avoidance and micro-satellite stability in cell.

Publications notables

Autrice	Pubmed ID	Journal	Application
Bin Zhang	32964498	Neurochem Res	IHC
Xuting Ran	35664732	Front Oncol	IHC
Jun Zhu	32396667	J Surg Oncol	IHC

Stockage

Stockage:
Stocker à -20°C. Stable pendant un an après l'expédition.

Tampon de stockage:
PBS avec azoture de sodium à 0,02 % et glycérol à 50 % pH 7,3
L'aliquotage n'est pas nécessaire pour le stockage à -20C

*** Les 20ul contiennent 0,1% de BSA.

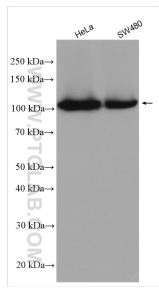
For technical support and original validation data for this product please contact:

T: 1 (888) 4PTGLAB (1-888-478-4522) (toll free in USA), or 1(312) 455-8498 (outside USA)

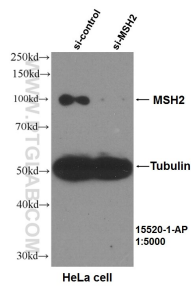
E: proteintech@ptglab.com
W: ptglab.com

This product is exclusively available under Proteintech Group brand and is not available to purchase from any other manufacturer.

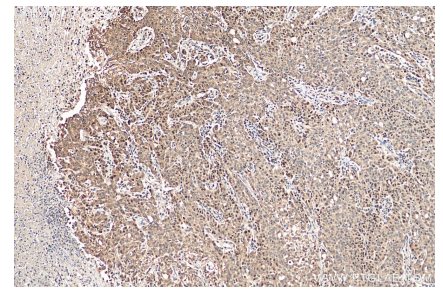
Données de validation sélectionnées



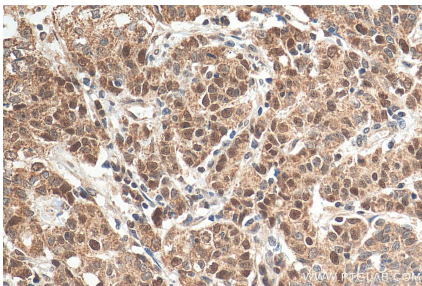
Various lysates were subjected to SDS PAGE followed by western blot with 15520-1-AP (MSH2 antibody) at dilution of 1:1000 incubated at room temperature for 1.5 hours.



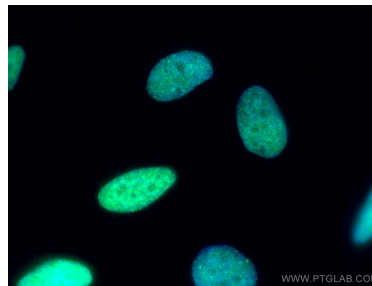
WB results of MSH2 (15520-1-AP, 1:5000) antibody with si-Control and si-MSH2 transfected HeLa cells..



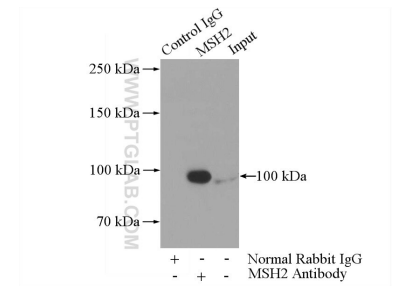
Immunohistochemical analysis of paraffin-embedded human stomach cancer tissue slide using 15520-1-AP (MSH2 antibody) at dilution of 1:200 (under 10x lens). Heat mediated antigen retrieval with Tris-EDTA buffer (pH 9.0).



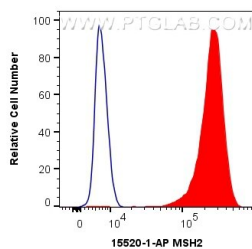
Immunohistochemical analysis of paraffin-embedded human stomach cancer tissue slide using 15520-1-AP (MSH2 antibody) at dilution of 1:200 (under 40x lens). Heat mediated antigen retrieval with Tris-EDTA buffer (pH 9.0).



Immunofluorescent analysis of (4% PFA) fixed HeLa cells using MSH2 antibody (15520-1-AP) at dilution of 1:100 and CoraLite®488-Conjugated AffiniPure Goat Anti-Rabbit IgG(H+L).



IP Result of anti-MSH2 (IP:15520-1-AP, 5ug; Detection:15520-1-AP 1:500) with HeLa cells lysate 2000ug.



1X10⁶ HeLa cells were intracellularly stained with 0.4 ug Anti-Human MSH2 (15520-1-AP) and CoraLite®488-Conjugated AffiniPure Goat Anti-Rabbit IgG(H+L) at dilution 1:1000 (red), or 0.4 ug Isotype Control. Cells were fixed and permeabilized with Transcription Factor Staining Buffer Kit (PF00011).