

À des fins de recherche uniquement

Anticorps Polyclonal de lapin anti-CABC1



Numéro de catalogue: 15528-1-AP

1 Publications

Informations de base

Numéro de catalogue:
15528-1-AP

Taille:
150ul, Concentration: 300 µg/ml by Nanodrop and 200 µg/ml by Bradford method using BSA as the standard;

Hôte:
Lapin

Isotype:
IgG

Immunogen Catalog Number:
AG7612

Numéro d'acquisition GenBank:
BC005171

Identification du gène (NCBI):
56997

Nom complet:
chaperone, ABC1 activity of bc1 complex homolog (S. pombe)

MW calculé

72 kDa

MW observés:

60 kDa

Méthode de purification:
Purification par affinité contre l'antigène

Dilutions recommandées:
WB 1:1000-1:4000
IF 1:50-1:500

Applications

Applications testées:
IF, WB, ELISA

Demandes citées:
WB

Spécificité de l'espèce:
Humain, rat, souris

Espèces citées:
souris

Contrôles positifs:

WB : cellules HeLa, cellules U-251, tissu cardiaque de souris, tissu cardiaque humain, tissu de muscle squelettique humain

IF : cellules HepG2,

Informations générales

CABC1 (Chaperone, ABC1 activity of bc1 complex homolog) is induced by the tumor suppressor p53 and is similar to the yeast ABC1, which is involved in an electron-transferring membrane protein complex in the respiratory chain. The CABC1 product was located in mitochondria, and may play an important role in mediating p53-inducible apoptosis. Four isoforms of CABC1 exist due to alternative splicing events.

Publications notables

Autrice	Pubmed ID	Journal	Application
Agustín Hidalgo-Gutiérrez	30482867	EMBO Mol Med	WB

Stockage

Stockage:

Stocker à -20°C. Stable pendant un an après l'expédition.

Tampon de stockage:

PBS avec azote de sodium à 0,02 % et glycérol à 50 % pH 7,3

L'aliquotage n'est pas nécessaire pour le stockage à -20C

*** Les 20ul contiennent 0,1% de BSA.

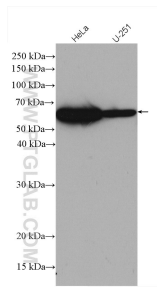
For technical support and original validation data for this product please contact:

T: 1 (888) 4PTGLAB (1-888-478-4522) (toll free in USA), or 1(312) 455-8498 (outside USA)

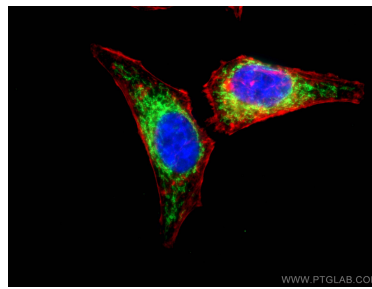
E: proteintech@ptglab.com
W: ptglab.com

This product is exclusively available under Proteintech Group brand and is not available to purchase from any other manufacturer.

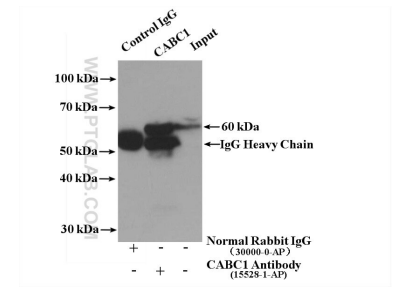
Données de validation sélectionnées



Various lysates were subjected to SDS PAGE followed by western blot with 15528-1-AP (CABC1 antibody) at dilution of 1:2000 incubated at room temperature for 1.5 hours.



Immunofluorescent analysis of (4% PFA) fixed HepG2 cells using 15528-1-AP (CABC1 antibody), at dilution of 1:100 and CoraLite®488-Conjugated AffiniPure Goat Anti-Rabbit IgG(H+L). Red: CL555-phalloidin staining of F-actin.



IP result of anti-CABC1 (IP:15528-1-AP, 4ug; Detection:15528-1-AP 1:300) with mouse heart tissue lysate 3700 ug.