

À des fins de recherche uniquement

# Anticorps Polyclonal de lapin anti-MTX1



Numéro de catalogue: 15529-1-AP

Phare

3 Publications

## Informations de base

Numéro de catalogue:

15529-1-AP

Taille:

150ul, Concentration: 600 µg/ml by Nanodrop and 353 µg/ml by Bradford method using BSA as the standard;

Hôte:

Lapin

Isotype:

IgG

Immunogen Catalog Number:

AG7685

Numéro d'acquisition GenBank:

BC001906

Identification du gène (NCBI):

4580

Nom complet:

metaxin 1

MW calculé

51 kDa

MW observés:

35 kDa

Méthode de purification:

Purification par affinité contre l'antigène

Dilutions recommandées:

WB 1:500-1:1000

IP 0.5-4.0 ug for IP and 1:500-1:1000 for WB

## Applications

Applications testées:

IP, WB, ELISA

Demandes citées:

IP, WB

Spécificité de l'espèce:

Humain

Espèces citées:

Humain, souris

Contrôles positifs:

WB : cellules HepG2, cellules A549, cellules HeLa, cellules Jurkat

IP : cellules MCF-7,

## Informations générales

METAXINs are proteins located in the outer membrane of the mammalian mitochondrion. METAXIN 1 was characterized firstly and was found to play a role in the import of mitochondrial precursor proteins. It may also play a role in the assembly of b-barrel proteins into the outer membrane METAXIN1 was reported to be essential for survival of the postimplantation mouse embryo. METAXIN 1 has multiple transcripts. Several isoforms of METAXIN 1 exist due to the alternative splicing, with the predicted MW of 51, 48 and 36 kDa, respectively. Metaxin 1 interacts with metaxin 2, a novel related protein associated with the mammalian mitochondrial outer membrane and form complex in the mitochondrion outer membrane.

## Publications notables

Autrice	Pubmed ID	Journal	Application
Li Chen	35313046	Hepatology	WB
Li Li	34421355	Int J Biol Sci	WB,IP
Stephen M Coscia	36744380	J Cell Sci	WB

## Stockage

Stockage:

Stocker à -20°C. Stable pendant un an après l'expédition.

Tampon de stockage:

PBS avec azoture de sodium à 0,02 % et glycérol à 50 % pH 7,3

L'aliquotage n'est pas nécessaire pour le stockage à -20C

\*\*\* Les 20ul contiennent 0,1% de BSA.

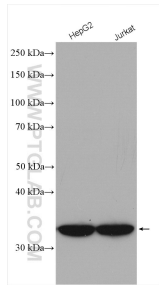
For technical support and original validation data for this product please contact:

T: 1 (888) 4PTGLAB (1-888-478-4522) (toll free in USA), or 1(312) 455-8498 (outside USA)

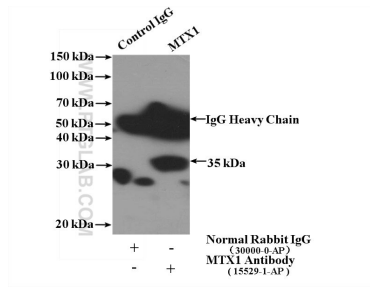
E: proteintech@ptglab.com  
W: ptglab.com

This product is exclusively available under Proteintech Group brand and is not available to purchase from any other manufacturer.

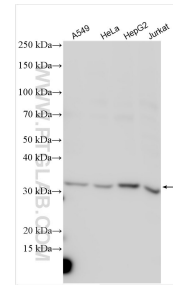
## Données de validation sélectionnées



Various lysates were subjected to SDS PAGE followed by western blot with 15529-1-AP (MTX1 antibody) at dilution of 1:600 incubated at room temperature for 1.5 hours.



IP Result of anti-MTX1 (IP:15529-1-AP, 4ug; Detection:15529-1-AP 1:700) with MCF-7 cells lysate 1280ug.



Various lysates were subjected to SDS PAGE followed by western blot with 15529-1-AP (MTX1 antibody) at dilution of 1:800 incubated at room temperature for 1.5 hours.