

À des fins de recherche uniquement

Anticorps Polyclonal de lapin anti-CSTF1



Numéro de catalogue: 15537-1-AP

Informations de base

Numéro de catalogue:
15537-1-AP

Taille:
150ul, Concentration: 350 µg/ml by
Nanodrop and 267 µg/ml by Bradford
method using BSA as the standard;

Hôte:
Lapin

Isotype:
IgG

Immunogen Catalog Number:
AG7874

Numéro d'acquisition GenBank:
BC007425

Identification du gène (NCBI):
1477

Nom complet:
cleavage stimulation factor, 3' pre-
RNA, subunit 1, 50kDa

MW calculé:
48 kDa

MW observés:
50 kDa

Méthode de purification:
Purification par affinité contre
l'antigène

Dilutions recommandées:
WB 1:1000-1:4000
IP 0.5-4.0 ug for IP and 1:500-1:1000
for WB
IF 1:50-1:500

Applications

Applications testées:
IF, IP, WB, ELISA

Spécificité de l'espèce:
Humain

Contrôles positifs:

WB : cellules HeLa, cellules A549, cellules HEK-293T

IP : cellules HeLa,

IF : cellules HeLa,

Informations générales

Cleavage stimulation factor (CstF), a heterotrimeric protein with subunits of 77, 64, and 50 kD (CstF-77, -64, and -50), is a polyadenylation factor that helps to specify the site of processing. CstF recognizes the G+U-rich element, a sequence located downstream of the cleavage site. CstF-50 unit interacts with the COOH-terminal domain of the RNAP II largest subunit (CTD).

Stockage

Stockage:

Stocker à -20°C. Stable pendant un an après l'expédition.

Tampon de stockage:

PBS avec azoture de sodium à 0,02 % et glycérol à 50 % pH 7,3

L'aliquotage n'est pas nécessaire pour le stockage à -20C

*** Les 20ul contiennent 0,1% de BSA.

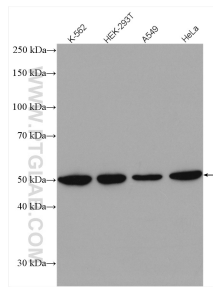
For technical support and original validation data for this product please contact:

T: 1 (888) 4PTGLAB (1-888-478-4522) (toll free
in USA), or 1(312) 455-8498 (outside USA)

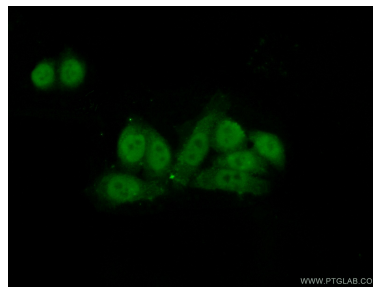
E: proteintech@ptglab.com
W: ptglab.com

This product is exclusively available under Proteintech Group brand and is not available to purchase from any other manufacturer.

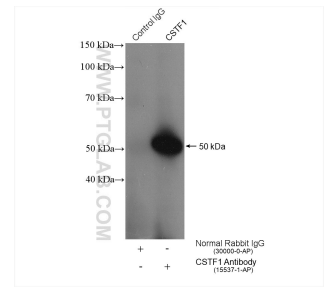
Données de validation sélectionnées



Various lysates were subjected to SDS PAGE followed by western blot with 15537-1-AP (CSTF1 antibody) at dilution of 1:2000 incubated at room temperature for 1.5 hours.



Immunofluorescent analysis of (10% Formaldehyde) fixed HeLa cells using 15537-1-AP (CSTF1 antibody) at dilution of 1:50 and Alexa Fluor 488-conjugated AffiniPure Goat Anti-Rabbit IgG(H+L).



IP result of anti-CSTF1 (IP:15537-1-AP, 4ug; Detection:15537-1-AP 1:500) with HeLa cells lysate 680 ug.