

À des fins de recherche uniquement

Anticorps Polyclonal de lapin anti-MRPL11



Numéro de catalogue: 15543-1-AP

10 Publications

Informations de base

Numéro de catalogue:

15543-1-AP

Taille:

150ul, Concentration: 400 µg/ml by Nanodrop and 293 µg/ml by Bradford method using BSA as the standard;

Hôte:

Lapin

Isotype:

IgG

Immunogen Catalog Number:

AG7899

Numéro d'acquisition GenBank:

BC005002

Identification du gène (NCBI):

65003

Nom complet:

mitochondrial ribosomal protein L11

MW calculé

21 kDa

MW observés:

21 kDa

Méthode de purification:

Purification par affinité contre l'antigène

Dilutions recommandées:

WB 1:1000-1:6000

IP 0.5-4.0 ug for IP and 1:500-1:2000 for WB

IHC 1:20-1:200

IF 1:50-1:500

Applications

Applications testées:

FC, IF, IHC, IP, WB, ELISA

Demandes citées:

CoIP, WB

Spécificité de l'espèce:

Humain, rat, souris

Espèces citées:

Humain, souris

Remarque-IHC: il est suggéré de démasquer l'antigène avec un tampon de TE buffer pH 9,0; (*) A défaut, le démasquage de l'antigène peut être effectué avec un tampon citrate pH 6,0.

Contrôles positifs:

WB : cellules BxPC-3, cellules K-562

IP : tissu hépatique de souris,

IHC : tissu hépatique humain,

IF : cellules HepG2,

Informations générales

MRPL11 is one of the protein components of mitochondrial ribosomes encoded by the nuclear genome, which is essential for oxidative phosphorylation.

Publications notables

| Autrice | Pubmed ID | Journal | Application |
|-----------------------|-----------|---------------|-------------|
| Uwe Richter | 30262910 | Nat Commun | WB |
| Uwe Richter | 26504172 | J Cell Biol | WB |
| Christopher B Jackson | 30358850 | Hum Mol Genet | WB |

Stockage

Stockage:

Stocker à -20°C. Stable pendant un an après l'expédition.

Tampon de stockage:

PBS avec azoture de sodium à 0,02 % et glycérol à 50 % pH 7,3

L'aliquotage n'est pas nécessaire pour le stockage à -20C

*** Les 20ul contiennent 0,1% de BSA.

For technical support and original validation data for this product please contact:

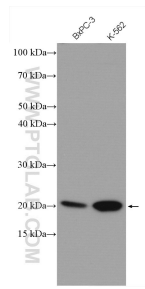
T: 1 (888) 4PTGLAB (1-888-478-4522) (toll free in USA), or 1(312) 455-8498 (outside USA)

E: proteintech@ptglab.com

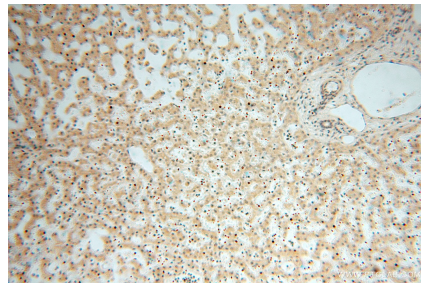
W: ptglab.com

This product is exclusively available under Proteintech Group brand and is not available to purchase from any other manufacturer.

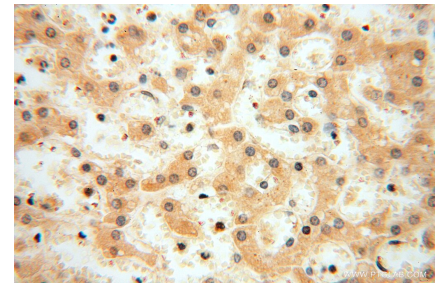
Données de validation sélectionnées



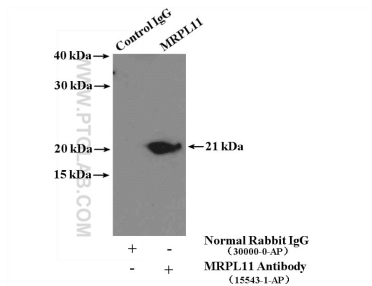
Various lysates were subjected to SDS PAGE followed by western blot with 15543-1-AP (MRPL11 antibody) at dilution of 1:3000 incubated at room temperature for 1.5 hours.



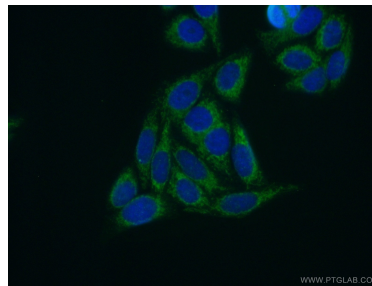
Immunohistochemical analysis of paraffin-embedded human liver using 15543-1-AP (MRPL11 antibody) at dilution of 1:50 (under 10x lens).



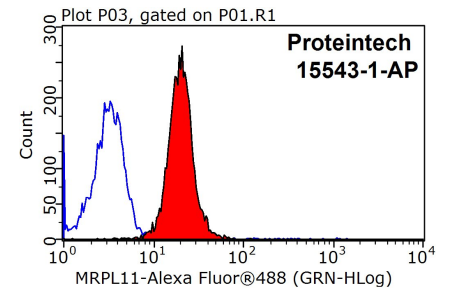
Immunohistochemical analysis of paraffin-embedded human liver using 15543-1-AP (MRPL11 antibody) at dilution of 1:50 (under 40x lens).



IP Result of anti-MRPL11 (IP:15543-1-AP, 4ug; Detection:15543-1-AP 1:1000) with mouse liver tissue lysate 4000ug.



Immunofluorescent analysis of (10% Formaldehyde) fixed HepG2 cells using 15543-1-AP (MRPL11 antibody) at dilution of 1:50 and Alexa Fluor 488-conjugated AffiniPure Goat Anti-Rabbit IgG(H+L).



1x10⁶ HepG2 cells were stained with 0.2ug MRPL11 antibody (15543-1-AP, red) and control antibody (blue). Fixed with 90% MeOH blocked with 3% BSA (30 min). Alexa Fluor 488-conjugated AffiniPure Goat Anti-Rabbit IgG(H+L) with dilution 1:1500.