

À des fins de recherche uniquement

Anticorps Polyclonal de lapin anti-ALDH1B1



Numéro de catalogue: 15560-1-AP

10 Publications

Informations de base

Numéro de catalogue:

15560-1-AP

Taille:

150ul, Concentration: 700 µg/ml by Nanodrop and 333 µg/ml by Bradford method using BSA as the standard;

Hôte:

Lapin

Isotype:

IgG

Immunogen Catalog Number:

AG7144

Numéro d'acquisition GenBank:

BC001619

Identification du gène (NCBI):

219

Nom complet:

aldehyde dehydrogenase 1 family, member B1

MW calculé

57 kDa

MW observés:

55 kDa

Méthode de purification:

Purification par affinité contre l'antigène

Dilutions recommandées:

WB 1:1000-1:6000

IP 0.5-4.0 ug for IP and 1:500-1:1000 for WB

IHC 1:20-1:200

IF 1:20-1:200

Applications

Applications testées:

IF, IHC, IP, WB, ELISA

Demandes citées:

IHC, WB

Spécificité de l'espèce:

Humain, rat, souris

Espèces citées:

Humain, rat, souris

Remarque-IHC: il est suggéré de démasquer l'antigène avec un tampon de TE buffer pH 9,0; (*) A défaut, 'le démasquage de l'antigène peut être 'effectué avec un tampon citrate pH 6,0.

Contrôles positifs:

WB : cellules HepG2, cellules K-562, tissu cérébral de souris

IP : tissu cérébral de souris,

IHC : tissu testiculaire humain,

IF : cellules HepG2,

Informations générales

Aldehyde dehydrogenases (ALDHs) belong to a superfamily of NAD(P)⁺-dependent enzymes, which catalyze the oxidation of endogenous and exogenous aldehydes to their corresponding acids. ALDH1B1 is a mitochondrial ALDH that it is dramatically upregulated in human colonic adenocarcinoma, making it a potential biomarker for human colon cancer.(PMID:21216231). ALDH1B1 is a homotetramer expressed in various adult and fetal human tissues including liver, testis, kidney, skeletal muscle, heart, placenta, brain and lung(PMID:18611112).

Publications notables

Autrice	Pubmed ID	Journal	Application
Carlos J Diaz Osterman	31478830	Elife	WB
Agustín Hidalgo-Gutiérrez	34680574	Biomedicines	WB
Akane Kasai	35318866	Am J Physiol Regul Integr Comp Physiol	WB

Stockage

Stockage:

Stocker à -20°C. Stable pendant un an après l'expédition.

Tampon de stockage:

PBS avec azoture de sodium à 0,02 % et glycérol à 50 % pH 7,3

L'aliquotage n'est pas nécessaire pour le stockage à -20C

*** Les 20ul contiennent 0,1% de BSA.

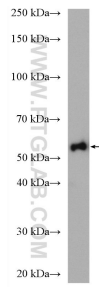
For technical support and original validation data for this product please contact:

T: 1 (888) 4PTGLAB (1-888-478-4522) (toll free in USA), or 1(312) 455-8498 (outside USA)

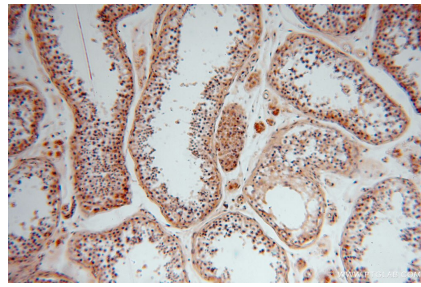
E: proteintech@ptglab.com
W: ptglab.com

This product is exclusively available under Proteintech Group brand and is not available to purchase from any other manufacturer.

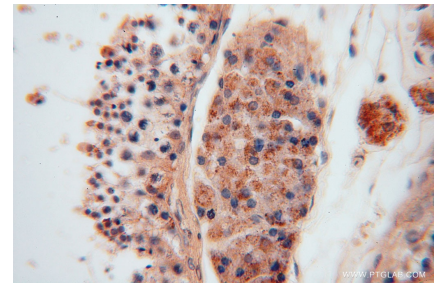
Données de validation sélectionnées



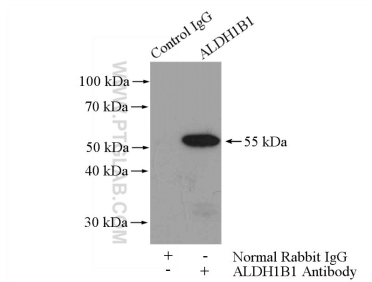
HepG2 cells were subjected to SDS PAGE followed by western blot with 15560-1-AP (ALDH1B1 antibody) at dilution of 1:4000 incubated at room temperature for 1.5 hours.



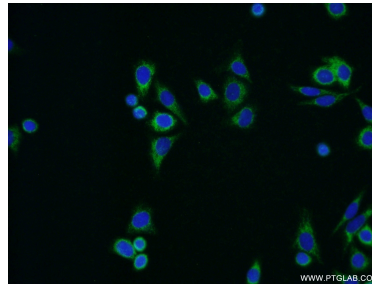
Immunohistochemical analysis of paraffin-embedded human testis using 15560-1-AP (ALDH1B1 antibody) at dilution of 1:100 (under 10x lens).



Immunohistochemical analysis of paraffin-embedded human testis using 15560-1-AP (ALDH1B1 antibody) at dilution of 1:100 (under 40x lens).



IP Result of anti-ALDH1B1 (IP:15560-1-AP, 4ug; Detection:15560-1-AP 1:500) with mouse brain tissue lysate 4000ug.



Immunofluorescent analysis of HepG2 cells using 15560-1-AP (ALDH1B1 antibody) at dilution of 1:50 and Alexa Fluor 488-conjugated AffiniPure Goat Anti-Rabbit IgG(H+L).