

À des fins de recherche uniquement

# Anticorps Polyclonal de lapin anti-ALDH3A1



Numéro de catalogue: 15578-1-AP

Phare

19 Publications

## Informations de base

Numéro de catalogue:

15578-1-AP

Taille:

150ul, Concentration: 650 µg/ml by Nanodrop;

Hôte:

Lapin

Isotype:

IgG

Immunogen Catalog Number:

AG7977

Numéro d'acquisition GenBank:

BC004370

Identification du gène (NCBI):

218

Nom complet:

aldehyde dehydrogenase 3 family, memberA1

MW calculé

50 kDa

MW observés:

48 kDa

Méthode de purification:

Purification par affinité contre l'antigène

Dilutions recommandées:

WB 1:20000-1:100000

IP 0.5-4.0 ug for IP and 1:1000-1:6000 for WB

IF 1:50-1:500

## Applications

Applications testées:

FC, IF, IP, WB, ELISA

Demandes citées:

FC, IF, IHC, WB

Spécificité de l'espèce:

Humain, rat, souris

Espèces citées:

Humain, Lapin, rat, souris

Contrôles positifs:

WB : cellules A549,

IP : cellules A549,

IF : cellules HEK-293T,

## Informations générales

ALDH3A1 (Aldehyde dehydrogenase, dimeric NADP-prefering), also named as ALDH3, is a member of the ALDH superfamily, which consists of NAD(P)+-dependent enzymes that catalyse the oxidation of a wide variety of endogenously produced and exogenous aldehydes to their corresponding acids. It is expressed at high concentrations in the mammalian cornea and it is believed that it protects this vital tissue and the rest of the eye against UV light-induced damage. (PMID:12943535). It can exist as a dimer (PMID:16919242).

## Publications notables

Autrice	Pubmed ID	Journal	Application
Jing Ma	25190659	Invest Ophthalmol Vis Sci	WB, IHC
Beau J Fenner	31632999	Eye Vis (Lond)	FC
Yu-Show Fu	35625862	Biomedicines	IHC

## Stockage

Stockage:

Stocker à -20°C. Stable pendant un an après l'expédition.

Tampon de stockage:

PBS avec azoture de sodium à 0,02 % et glycérol à 50 % pH 7,3

L'aliquotage n'est pas nécessaire pour le stockage à -20C

\*\*\* Les 20ul contiennent 0,1% de BSA.

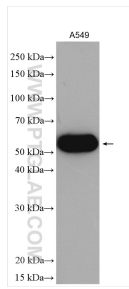
For technical support and original validation data for this product please contact:

T: 1 (888) 4PTGLAB (1-888-478-4522) (toll free in USA), or 1(312) 455-8498 (outside USA)

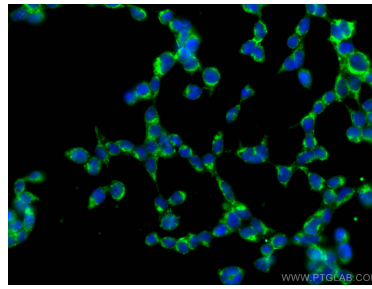
E: proteintech@ptglab.com  
W: ptglab.com

This product is exclusively available under Proteintech Group brand and is not available to purchase from any other manufacturer.

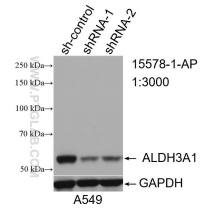
## Données de validation sélectionnées



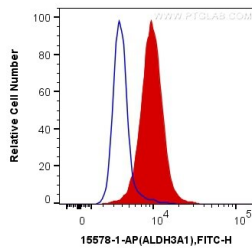
A549 cells were subjected to SDS PAGE followed by western blot with 15578-1-AP (ALDH3A1 antibody) at dilution of 1:50000 incubated at room temperature for 1.5 hours.



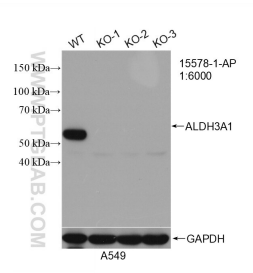
Immunofluorescent analysis of (-20°C Ethanol) fixed HEK-293T cells using ALDH3A1 antibody (15578-1-AP) at dilution of 1:200 and CoraLite®488-Conjugated AffiniPure Goat Anti-Rabbit IgG(H+L).



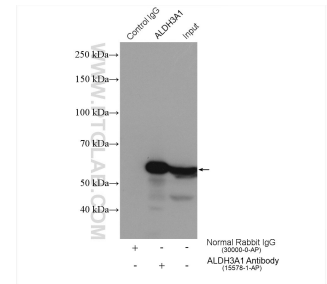
WB result of ALDH3A1 antibody (15578-1-AP; 1:3000; incubated at room temperature for 1.5 hours) with sh-Control and sh-ALDH3A1 transfected A549 cells.



1X10<sup>6</sup> HEK-293 cells were intracellularly stained with 0.25 ug Anti-Human ALDH3A1 (15578-1-AP) and CoraLite®488-Conjugated AffiniPure Goat Anti-Rabbit IgG(H+L) at dilution 1:1000 (red), or 0.25 ug Control Antibody. Cells were fixed with 4% PFA and permeabilized with Flow Cytometry Perm Buffer (PF00011-C).



WB result of ALDH3A1 antibody (15578-1-AP; 1:6000; room temperature for 1.5 hours) with wild-type and ALDH3A1 knockout A549 cells.



IP result of anti-ALDH3A1 (IP:15578-1-AP, 4ug; Detection:15578-1-AP 1:3000) with A549 cells lysate 1480 ug.