

À des fins de recherche uniquement

Anticorps Polyclonal de lapin anti-SELS



Numéro de catalogue: 15591-1-AP

Phare

21 Publications

Informations de base

Numéro de catalogue:

15591-1-AP

Taille:

150ul, Concentration: 600 µg/ml by Nanodrop and 333 µg/ml by Bradford method using BSA as the standard;

Hôte:

Lapin

Isotype:

IgG

Immunogen Catalog Number:

AG7928

Numéro d'acquisition GenBank:

BC005840

Identification du gène (NCBI):

55829

Nom complet:

selenoprotein S

MW calculé

21 kDa

MW observés:

21 kDa

Méthode de purification:

Purification par affinité contre l'antigène

Dilutions recommandées:

WB 1:500-1:2000

IP 0.5-4.0 ug for IP and 1:500-1:1000 for WB

Applications

Applications testées:

IP, WB, ELISA

Demandes citées:

IF, IHC, WB

Spécificité de l'espèce:

Humain, rat, souris

Espèces citées:

Humain, porc, rat, souris

Contrôles positifs:

WB : tissu cérébral de rat, cellules HeLa

IP : cellules HepG2,

Informations générales

SELS, also named as VIMP and SEPS1, plays an important role in the production of inflammatory cytokines and its expression is activated by endoplasmic reticulum (ER) stress. It probably acts by serving as a linker between DERL1 and VCP.

Publications notables

Autrice	Pubmed ID	Journal	Application
Yan Liu	34679693	Antioxidants (Basel)	WB
Zixin Min	30247797	J Cell Mol Med	IHC, WB
Zinan Wang	34715363	Int J Biochem Cell Biol	WB

Stockage

Stockage:

Stocker à -20°C. Stable pendant un an après l'expédition.

Tampon de stockage:

PBS avec azoture de sodium à 0,02 % et glycérol à 50 % pH 7,3

L'aliquotage n'est pas nécessaire pour le stockage à -20C

*** Les 20ul contiennent 0,1% de BSA.

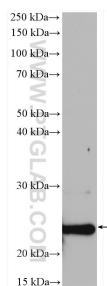
For technical support and original validation data for this product please contact:

T: 1 (888) 4PTGLAB (1-888-478-4522) (toll free in USA), or 1(312) 455-8498 (outside USA)

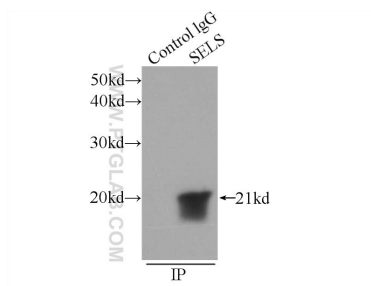
E: proteintech@ptglab.com
W: ptglab.com

This product is exclusively available under Proteintech Group brand and is not available to purchase from any other manufacturer.

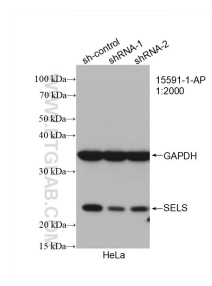
Données de validation sélectionnées



rat brain tissue were subjected to SDS PAGE followed by western blot with 15591-1-AP (SELS antibody) at dilution of 1:1000 incubated at room temperature for 1.5 hours.



IP Result of anti-SELS (IP:15591-1-AP, 3ug; Detection:15591-1-AP 1:500) with HepG2 cells lysate 600ug.



WB result of SELS antibody (15591-1-AP; 1:2000; incubated at room temperature for 1.5 hours) with sh-Control and sh-SELS transfected HeLa cells.