

À des fins de recherche uniquement

Anticorps Polyclonal de lapin anti-RNASEH1



Numéro de catalogue: 15606-1-AP

Phare

39 Publications

Informations de base

Numéro de catalogue:

15606-1-AP

Taille:

150ul, Concentration: 500 µg/ml by Nanodrop;

Hôte:

Lapin

Isotype:

IgG

Immunogen Catalog Number:

AG7990

Numéro d'acquisition GenBank:

BC002973

Identification du gène (NCBI):

246243

Nom complet:

ribonuclease H1

MW calculé

32 kDa

MW observés:

32 kDa

Méthode de purification:

Purification par affinité contre l'antigène

Dilutions recommandées:

WB 1:1000-1:5000

IP 0.5-4.0 ug for IP and 1:500-1:1000 for WB

IF 1:50-1:500

Applications

Applications testées:

IF, IP, WB, ELISA

Demandes citées:

IF, WB

Spécificité de l'espèce:

Humain, rat, souris

Espèces citées:

Humain, souris

Contrôles positifs:

WB : cellules HeLa, cellules U2OS

IP : cellules HeLa,

IF : cellules HeLa,

Informations générales

Ribonucleases H are enzymes that cleave the RNA of RNA/DNA hybrids that form during replication and repair and which could lead to DNA instability if they were not processed. Eukaryotic RNases H are larger and more complex than their prokaryotic counterparts [PMID:12667461]. Eukaryotic RNase H1 has acquired a Hybrid Binding Domain that confers processivity and affinity for the substrate. Because of its essential role and its similarities in structure and enzymatic mechanism to the RNase H of HIV reverse transcriptase, RNASEH1 has been implicated in mitochondrial DNA replication during mouse development [PMID:19228196].

Publications notables

Autrice	Pubmed ID	Journal	Application
Negin Khosraviani	36178790	STAR Protoc	WB
Sonia Jimeno	34535666	Nat Commun	IF
Yanli Liu	36114190	Nat Commun	IF

Stockage

Stockage:

Stocker à -20°C. Stable pendant un an après l'expédition.

Tampon de stockage:

PBS avec azoture de sodium à 0,02 % et glycérol à 50 % pH 7,3

L'aliquotage n'est pas nécessaire pour le stockage à -20C

*** Les 20ul contiennent 0,1% de BSA.

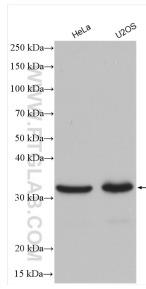
For technical support and original validation data for this product please contact:

T: 1 (888) 4PTGLAB (1-888-478-4522) (toll free in USA), or 1(312) 455-8498 (outside USA)

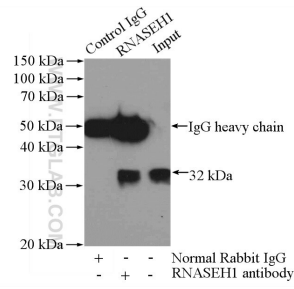
E: proteintech@ptglab.com
W: ptglab.com

This product is exclusively available under Proteintech Group brand and is not available to purchase from any other manufacturer.

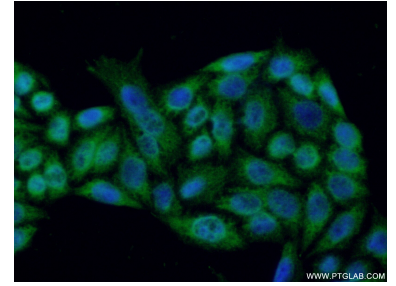
Données de validation sélectionnées



Various lysates were subjected to SDS PAGE followed by western blot with 15606-1-AP (RNASEH1 antibody) at dilution of 1:2500 incubated at room temperature for 1.5 hours.



IP Result of anti-RNASEH1 (IP:15606-1-AP, 3ug; Detection:15606-1-AP 1:500) with HeLa cells lysate 1200ug.



Immunofluorescent analysis of (-20°C Ethanol) fixed HeLa cells using 15606-1-AP (RNASEH1 antibody) at dilution of 1:50 and Alexa Fluor 488-conjugated AffiniPure Goat Anti-Rabbit IgG(H+L).