

À des fins de recherche uniquement

Anticorps Polyclonal de lapin anti-Fibronectin



Numéro de catalogue: 15613-1-AP

Phare

485 Publications

Informations de base

Numéro de catalogue:

15613-1-AP

Taille:

150ul, Concentration: 500 µg/ml by Nanodrop;

Hôte:

Lapin

Isotype:

IgG

Immunogen Catalog Number:

AG8004

Numéro d'acquisition GenBank:

BC005858

Identification du gène (NCBI):

2335

Nom complet:

fibronectin 1

MW calculé

2386 aa, 263 kDa

MW observés:

250-275 kDa

Méthode de purification:

Purification par affinité contre l'antigène

Dilutions recommandées:

WB 1:2000-1:20000

IP 0.5-4.0 ug for IP and 1:200-1:1000 for WB

IF 1:50-1:500

Applications

Applications testées:

FC, IF, IP, WB, ELISA

Demandes citées:

ELISA, FC, IF, WB

Spécificité de l'espèce:

Humain, rat, souris

Espèces citées:

Humain, porc, rat, souris, Hamster, embryons de médaka

Contrôles positifs:

WB : plasma humain, cellules MDA-MB-453s, cellules NIH/3T3

IP : cellules NIH/3T3,

IF : cellules NIH/3T3,

Informations générales

Fibronectin 1 (FN1) is a high molecular weight glycoprotein which exists in both a soluble form in plasma (plasma FN1) and other body fluids and an insoluble form in the extracellular matrix (cellular FN1). Plasma FN1 (dimeric form) is secreted by hepatocytes. Cellular FN (dimeric or cross-linked multimeric forms), made by fibroblasts, epithelial and other cell types, is deposited as fibrils in the extracellular matrix. FN1 binds to cell surfaces through integrins and to various compounds including collagen, fibrin and heparin. It is involved in cell adhesion and migration processes including embryogenesis, wound healing, hemostasis, host defense, and metastasis. (PMID: 7276612; 12244123; 12847088)

Publications notables

Autrice	Pubmed ID	Journal	Application
Dong Zeng	32979359	Life Sci	WB
Bing Sun	27684953	PLoS One	WB
Chen Chen	36212944	Evid Based Complement Alternat Med	IF

Stockage

Stockage:

Stocker à -20°C. Stable pendant un an après l'expédition.

Tampon de stockage:

PBS avec azoture de sodium à 0,02 % et glycérol à 50 % pH 7,3

L'aliquotage n'est pas nécessaire pour le stockage à -20C

*** Les 20ul contiennent 0,1% de BSA.

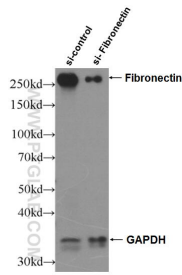
For technical support and original validation data for this product please contact:

T: 1 (888) 4PTGLAB (1-888-478-4522) (toll free in USA), or 1(312) 455-8498 (outside USA)

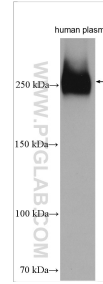
E: proteintech@ptglab.com
W: ptglab.com

This product is exclusively available under Proteintech Group brand and is not available to purchase from any other manufacturer.

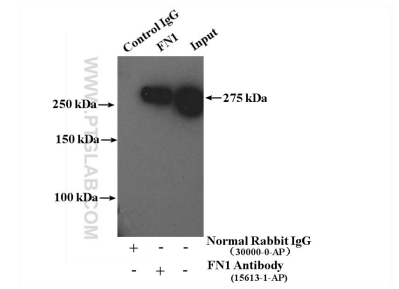
Données de validation sélectionnées



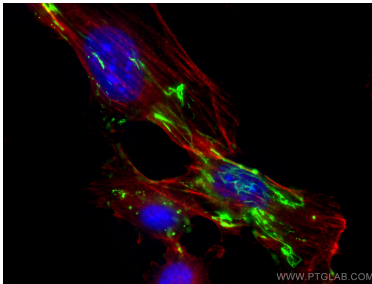
WB result of Fibronectin antibody (15613-1-AP; 1:2000; incubated at room temperature for 1.5 hours) with sh-Control and sh-Fibronectin transfected NIH/3T3 cells.



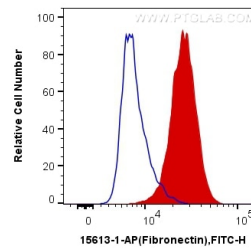
human plasma were subjected to SDS PAGE followed by western blot with 15613-1-AP (Fibronectin antibody) at dilution of 1:20000 incubated at room temperature for 1.5 hours.



IP Result of anti-Fibronectin (IP:15613-1-AP, 4ug; Detection:15613-1-AP 1:300) with NIH/3T3 cells lysate 4000ug.



Immunofluorescent analysis of (-20°C Ethanol) fixed NIH/3T3 cells using Fibronectin antibody (15613-1-AP) at dilution of 1:200 and CoraLite®488-Conjugated AffiniPure Goat Anti-Rabbit IgG(H+L), CL594-Phalloidin (red).



1X10⁶ NIH/3T3 cells were intracellularly stained with 0.4 ug Anti-Human Fibronectin (15613-1-AP) and CoraLite®488-Conjugated AffiniPure Goat Anti-Rabbit IgG(H+L) at dilution 1:1000 (red), or 0.4 ug Control Antibody. Cells were fixed with 4% PFA and permeabilized with Flow Cytometry Perm Buffer (PF00011-C).