

À des fins de recherche uniquement

Anticorps Polyclonal de lapin anti-PRC1



Numéro de catalogue: 15617-1-AP

Phare

15 Publications

Informations de base

Numéro de catalogue:
15617-1-AP

Taille:
150ul, Concentration: 450 µg/ml by Nanodrop and 320 µg/ml by Bradford method using BSA as the standard;

Hôte:
Lapin

Isotype:
IgG

Immunogen Catalog Number:
AG8028

Numéro d'acquisition GenBank:
BC003138

Identification du gène (NCBI):
9055

Nom complet:
protein regulator of cytokinesis 1

MW calculé
72 kDa

MW observés:
66 kDa

Méthode de purification:
Purification par affinité contre l'antigène

Dilutions recommandées:
WB 1:1000-1:8000
IP 0.5-4.0 ug for IP and 1:200-1:1000 for WB
IHC 1:50-1:500
IF 1:200-1:800

Applications

Applications testées:
IF, IHC, IP, WB, ELISA

Demandes citées:
IF, IHC, WB

Spécificité de l'espèce:
Humain

Espèces citées:
Humain, souris

Remarque-IHC: il est suggéré de démasquer l'antigène avec un tampon de TE buffer pH 9,0; (*) A défaut, le démasquage de l'antigène peut être effectué avec un tampon citrate pH 6,0.

Contrôles positifs:

WB : cellules MCF-7, cellules C6, cellules HEK-293, cellules HeLa, cellules K-562, cellules Raji, cellules SH-SY5Y

IP : cellules HEK-293,

IHC : tissu de cancer du sein humain,

IF : cellules HepG2,

Informations générales

PRC1 (protein regulator of cytokinesis 1) is a microtubule-bundling protein that is involved in cytokinesis. Depletion of PRC1 leads to failed cytokinesis. PRC1 is located in the nucleus during interphase, and becomes associated with mitotic spindles in a highly dynamic manner during mitosis, and localizes to the cell mid-body during cytokinesis. PRC1 is a substrate of CDK1 and it was assumed that CDK1 phosphorylation blocks its activity during metaphase. Three isoforms of PRC1 exist due to the alternative splicing, with predictive molecular weight of 71.6 kDa, 70.2 kDa and 66.2 kDa, respectively. The dual bands between 66-72 kDa detected by this antibody may represent different forms of PRC1.

Publications notables

Autrice	Pubmed ID	Journal	Application
Jing Li	34531368	Nat Commun	WB, IHC
Mansour Aboelenain	34636397	Development	WB
Tianyu Wu	36395215	Science	IF

Stockage

Stockage:

Stocker à -20°C. Stable pendant un an après l'expédition.

Tampon de stockage:

PBS avec azoture de sodium à 0,02 % et glycérol à 50 % pH 7,3

L'aliquotage n'est pas nécessaire pour le stockage à -20C

*** Les 20ul contiennent 0,1% de BSA.

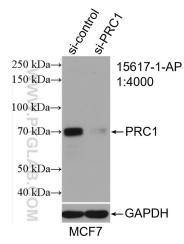
For technical support and original validation data for this product please contact:

T: 1 (888) 4PTGLAB (1-888-478-4522) (toll free in USA), or 1(312) 455-8498 (outside USA)

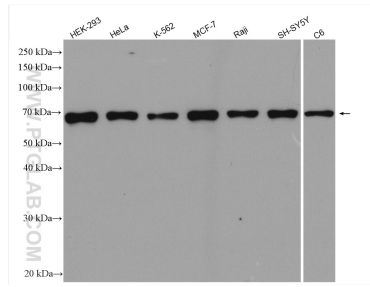
E: proteintech@ptglab.com
W: ptglab.com

This product is exclusively available under Proteintech Group brand and is not available to purchase from any other manufacturer.

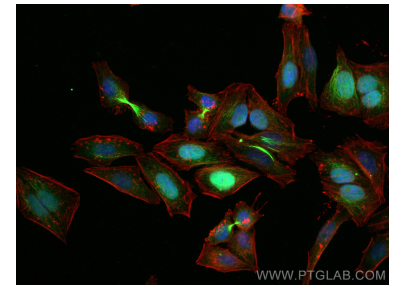
Données de validation sélectionnées



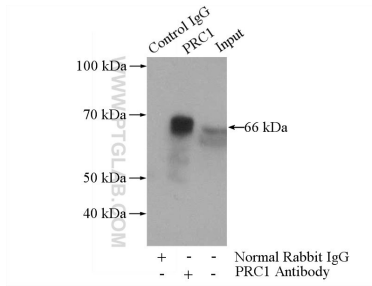
WB result of PRC1 antibody (15617-1-AP; 1:4000; incubated at room temperature for 1.5 hours) with sh-Control and sh-PRC1 transfected MCF-7 cells.



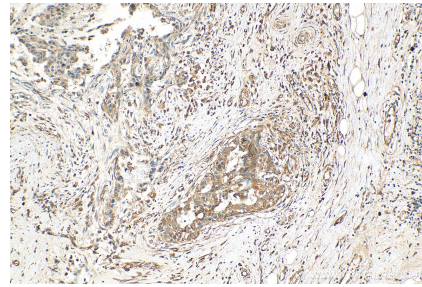
Various lysates were subjected to SDS PAGE followed by western blot with 15617-1-AP (PRC1 antibody) at dilution of 1:20000 incubated at room temperature for 1.5 hours.



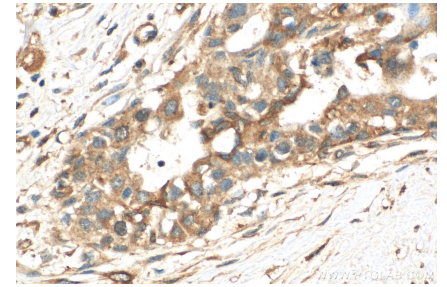
Immunofluorescent analysis of (4% PFA) fixed HepG2 cells using PRC1 antibody (15617-1-AP) at dilution of 1:400 and CoraLite@488-Conjugated AffiniPure Goat Anti-Rabbit IgG(H+L), CL594-Phalloidin (red).



IP Result of anti-PRC1 (IP:15617-1-AP, 4ug; Detection:15617-1-AP 1:300) with HEK-293 cells lysate 1480ug.



Immunohistochemical analysis of paraffin-embedded human breast cancer tissue slide using 15617-1-AP (PRC1 antibody) at dilution of 1:200 (under 10x lens). Heat mediated antigen retrieval with Tris-EDTA buffer (pH 9.0).



Immunohistochemical analysis of paraffin-embedded human breast cancer tissue slide using 15617-1-AP (PRC1 antibody) at dilution of 1:200 (under 40x lens). Heat mediated antigen retrieval with Tris-EDTA buffer (pH 9.0).