

À des fins de recherche uniquement

Anticorps Polyclonal de lapin anti-EXOSC5



Numéro de catalogue: 15627-1-AP

3 Publications

Informations de base

Numéro de catalogue:

15627-1-AP

Taille:

150ul, Concentration: 350 µg/ml by Nanodrop and 193 µg/ml by Bradford method using BSA as the standard;

Hôte:

Lapin

Isotype:

IgG

Immunogen Catalog Number:

AG8098

Numéro d'acquisition GenBank:

BC007742

Identification du gène (NCBI):

56915

Nom complet:

exosome component 5

MW calculé

235 aa, 25 kDa

MW observés:

28-30 kDa

Méthode de purification:

Purification par affinité contre l'antigène

Dilutions recommandées:

WB 1:500-1:3000

IP 0.5-4.0 ug for IP and 1:200-1:1000 for WB

IHC 1:20-1:200

Applications

Applications testées:

IHC, IP, WB, ELISA

Demandes citées:

IHC, WB

Spécificité de l'espèce:

Humain, rat

Espèces citées:

Humain

Remarque-IHC: il est suggéré de démasquer l'antigène avec un tampon de TE buffer pH 9,0; (*) A défaut, 'le démasquage de l'antigène peut être effectué avec un tampon citrate pH 6,0.

Contrôles positifs:

WB : cellules HEK-293, cellules HeLa, cellules K-562, cellules Raji

IP : cellules HeLa,

IHC : tissu de cancer du sein humain,

Informations générales

CML28 is a component of the human exosome, which is a multiprotein complex involved in the 3' processing and degradation of RNA [PMID:12359762]. CML28 is a novel 28 kDa TAA identified by serological analysis of cDNA expression libraries (SEREX) screening of a chronic myeloid leukemia (CML) cDNA expression library. As a potential target for tumor-specific immunotherapy, CML28 is superior to other known TAAs characterized by its broader spectrum expression in tumor cells and stricter expression in normal tissues [PMID:16815301].

Publications notables

Autrice	Pubmed ID	Journal	Application
Tobias Moll	36241425	Life Sci Alliance	WB
Yujing Zhang	36293016	Int J Mol Sci	IHC
Xiangliu Chen	35371329	J Cancer	WB,IHC

Stockage

Stockage:

Stocker à -20°C. Stable pendant un an après l'expédition.

Tampon de stockage:

PBS avec azoture de sodium à 0,02 % et glycérol à 50 % pH 7,3

L'aliquotage n'est pas nécessaire pour le stockage à -20C

*** Les 20ul contiennent 0,1% de BSA.

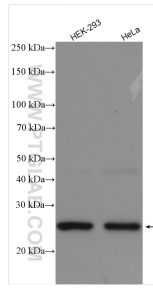
For technical support and original validation data for this product please contact:

T: 1 (888) 4PTGLAB (1-888-478-4522) (toll free in USA), or 1(312) 455-8498 (outside USA)

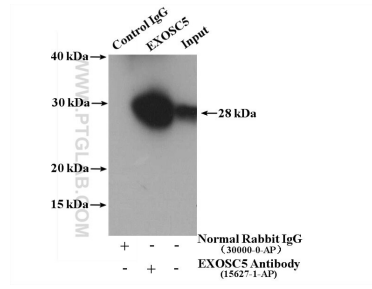
E: proteintech@ptglab.com
W: ptglab.com

This product is exclusively available under Proteintech Group brand and is not available to purchase from any other manufacturer.

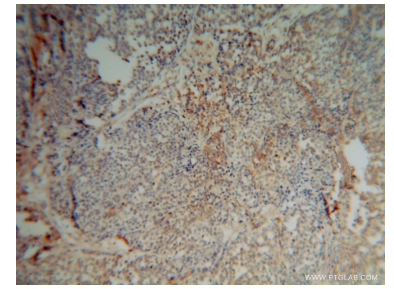
Données de validation sélectionnées



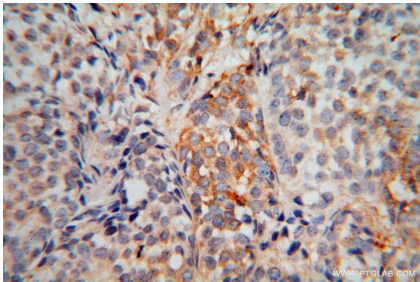
Various lysates were subjected to SDS PAGE followed by western blot with 15627-1-AP (EXOSC5 antibody) at dilution of 1:1500 incubated at room temperature for 1.5 hours.



IP result of anti-EXOSC5 (IP:15627-1-AP, 4ug; Detection:15627-1-AP 1:300) with HeLa cells lysate 2800 ug.



Immunohistochemical analysis of paraffin-embedded human breast cancer using 15627-1-AP (EXOSC5 antibody) at dilution of 1:50 (under 10x lens).



Immunohistochemical analysis of paraffin-embedded human breast cancer using 15627-1-AP (EXOSC5 antibody) at dilution of 1:50 (under 40x lens).