

À des fins de recherche uniquement

Anticorps Polyclonal de lapin anti-OPA3



Numéro de catalogue: 15638-1-AP

Phare

6 Publications

Informations de base

Numéro de catalogue:

15638-1-AP

Taille:

150ul, Concentration: 400 µg/ml by Nanodrop and 267 µg/ml by Bradford method using BSA as the standard;

Hôte:

Lapin

Isotype:

IgG

Immunogen Catalog Number:

AG8103

Numéro d'acquisition GenBank:

BC005059

Identification du gène (NCBI):

80207

Nom complet:

optic atrophy 3 (autosomal recessive, with chorea and spastic paraplegia)

MW calculé

179 aa, 20 kDa

MW observés:

20 kDa

Méthode de purification:

Purification par affinité contre l'antigène

Dilutions recommandées:

WB 1:500-1:2000

IP 0.5-4.0 ug for IP and 1:200-1:1000 for WB

IHC 1:50-1:500

IF 1:20-1:200

Applications

Applications testées:

IF, IHC, IP, WB, ELISA

Demandes citées:

IHC, IP, WB

Spécificité de l'espèce:

Humain, rat, souris

Espèces citées:

bovin, Humain, rat, souris

Remarque-IHC: il est suggéré de démasquer l'antigène avec un tampon de TE buffer pH 9,0; (*) A défaut, 'le démasquage de l'antigène peut être effectué avec un tampon citrate pH 6,0.

Contrôles positifs:

WB : cellules A549, cellules HEK-293T, cellules HeLa, cellules Jurkat, tissu de thymus de souris, tissu rénal humain

IP : cellules HeLa,

IHC : tissu hépatique humain, tissu de côlon de souris

IF : cellules HeLa,

Informations générales

The OPA3 cDNA encodes a deduced 179-amino acid protein. Northern blot analysis demonstrated a primary transcript of approximately 5.0 kb that was ubiquitously expressed, most prominently in skeletal muscle and kidney. Mutations in this gene have been shown to result in 3-methylglutaconic aciduria type III and autosomal dominant optic atrophy and cataract.

Publications notables

Autrice	Pubmed ID	Journal	Application
Miao Liu	35176941	Bioengineered	WB
Ning Meng	31881642	Cancers (Basel)	IHC
Alice E Navein	27106103	Hum Mol Genet	IHC

Stockage

Stockage:

Stocker à -20°C. Stable pendant un an après l'expédition.

Tampon de stockage:

PBS avec azoture de sodium à 0,02 % et glycérol à 50 % pH 7,3

L'aliquotage n'est pas nécessaire pour le stockage à -20C

*** Les 20ul contiennent 0,1% de BSA.

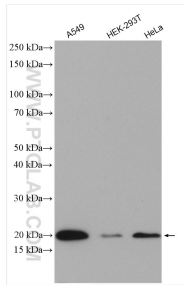
For technical support and original validation data for this product please contact:

T: 1 (888) 4PTGLAB (1-888-478-4522) (toll free in USA), or 1(312) 455-8498 (outside USA)

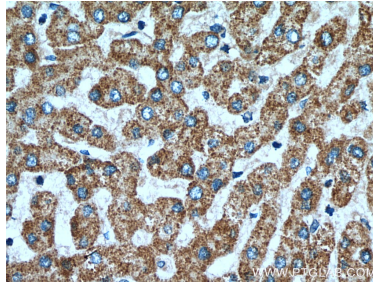
E: proteintech@ptglab.com
W: ptglab.com

This product is exclusively available under Proteintech Group brand and is not available to purchase from any other manufacturer.

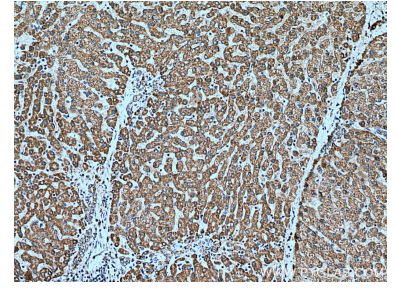
Données de validation sélectionnées



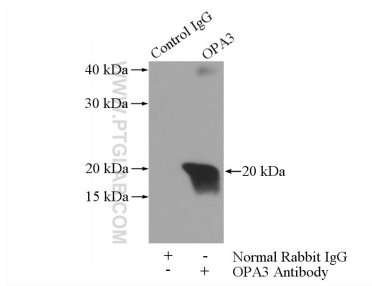
Various lysates were subjected to SDS PAGE followed by western blot with 15638-1-AP (OPA3 antibody) at dilution of 1:1000 incubated at room temperature for 1.5 hours.



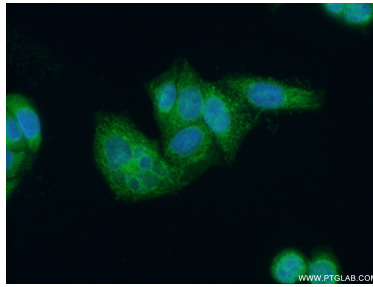
Immunohistochemical analysis of paraffin-embedded human liver tissue slide using 15638-1-AP (OPA3 antibody) at dilution of 1:200 (under 40x lens). Heat mediated antigen retrieval with Tris-EDTA buffer (pH 9.0).



Immunohistochemical analysis of paraffin-embedded human liver tissue slide using 15638-1-AP (OPA3 antibody) at dilution of 1:200 (under 10x lens). Heat mediated antigen retrieval with Tris-EDTA buffer (pH 9.0).



IP Result of anti-OPA3 (IP:15638-1-AP, 3ug; Detection:15638-1-AP 1:400) with HeLa cells lysate 2440ug.



Immunofluorescent analysis of (10% Formaldehyde) fixed HeLa cells using 15638-1-AP (OPA3 antibody) at dilution of 1:50 and Alexa Fluor 488-conjugated AffiniPure Goat Anti-Rabbit IgG(H+L).