

À des fins de recherche uniquement

Anticorps Polyclonal de lapin anti-SH2D3A



Numéro de catalogue: 15641-1-AP

Informations de base

Numéro de catalogue: 15641-1-AP	Numéro d'acquisition GenBank: BC006281	Méthode de purification: Purification par affinité contre l'antigène
Taille: 150ul, Concentration: 400 µg/ml by Nanodrop and 267 µg/ml by Bradford method using BSA as the standard;	Identification du gène (NCBI): 10045	Dilutions recommandées: WB 1:500-1:1000 IF 1:20-1:200
Hôte: Lapin	Nom complet: SH2 domain containing 3A	
Isotype: IgG	MW calculé: 576 aa, 63 kDa	
Immunogen Catalog Number: AG8132	MW observés: 64 kDa	

Applications

Applications testées: IF, WB, ELISA	Contrôles positifs: WB : cellules HeLa, cellules HEK-293, cellules HepG2 IF : cellules HeLa,
Spécificité de l'espèce: Humain	

Informations générales

SH2 domain containing 3A (SH2D3A) Is is a novel SH2-containing protein 1 (NSP1) with proline-rich domains and therefore probably involved in the signal-transduction of some ligand-activated tyrosine kinase receptors. Three phosphorylation sites of NSP1 have been found to date. NSP1 may be located at cell membrane play a role in JNK activation.

Stockage

Stockage:
Stocker à -20°C. Stable pendant un an après l'expédition.
Tampon de stockage:
PBS avec azoture de sodium à 0,02 % et glycérol à 50 % pH 7,3
L'aliquotage n'est pas nécessaire pour le stockage à -20C

***** Les 20ul contiennent 0,1% de BSA.**

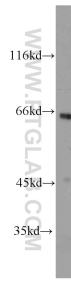
For technical support and original validation data for this product please contact:

T: 1 (888) 4PTGLAB (1-888-478-4522) (toll free in USA), or 1(312) 455-8498 (outside USA)

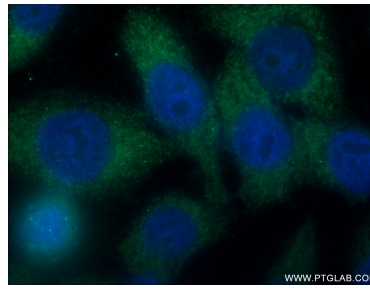
E: proteintech@ptglab.com
W: ptglab.com

This product is exclusively available under Proteintech Group brand and is not available to purchase from any other manufacturer.

Données de validation sélectionnées



HeLa cells were subjected to SDS PAGE followed by western blot with 15641-1-AP (SH2D3A antibody) at dilution of 1:1000 incubated at room temperature for 1.5 hours.



Immunofluorescent analysis of HeLa cells using 15641-1-AP (SH2D3A antibody) at dilution of 1:50 and Alexa Fluor 488-conjugated AffiniPure Goat Anti-Rabbit IgG(H+L).