

À des fins de recherche uniquement

Anticorps Polyclonal de lapin anti-CADM3



Numéro de catalogue: 15660-1-AP

Informations de base

Numéro de catalogue:
15660-1-AP

Taille:
150ul, Concentration: 700 µg/ml by
Nanodrop and 327 µg/ml by Bradford
method using BSA as the standard;

Hôte:
Lapin

Isotype:
IgG

Immunogen Catalog Number:
AG8081

Numéro d'acquisition GenBank:
BC033819

Identification du gène (NCBI):
57863

Nom complet:
cell adhesion molecule 3

MW calculé
43 kDa

MW observés:
38-50 kDa

Méthode de purification:
Purification par affinité contre
l'antigène

Dilutions recommandées:
WB 1:500-1:2000

Applications

Applications testées:
FC, WB, ELISA

Spécificité de l'espèce:
Humain, rat, souris

Contrôles positifs:

WB : tissu cérébral de souris, cellules Jurkat, cellules
SH-SY5Y, tissu cérébral de rat, tissu de cervelet de
souris

Informations générales

CADM3, also known as IGSF4B or TSLL1, is a transmembrane protein that is involved in the cell-cell adhesion. CADM3 is mainly expressed in the nervous system and plays a role in the formation of synapses, axon bundles, myelinated axons and cerebellar morphogenesis (PMID: 18420026).

Stockage

Stockage:

Stocker à -20°C. Stable pendant un an après l'expédition.

Tampon de stockage:

PBS avec azoture de sodium à 0,02 % et glycérol à 50 % pH 7,3

L'aliquotage n'est pas nécessaire pour le stockage à -20C

*** Les 20ul contiennent 0,1% de BSA.

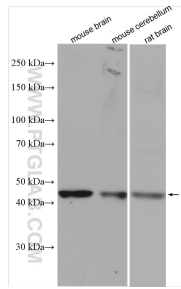
For technical support and original validation data for this product please contact:

T: 1 (888) 4PTGLAB (1-888-478-4522) (toll free
in USA), or 1(312) 455-8498 (outside USA)

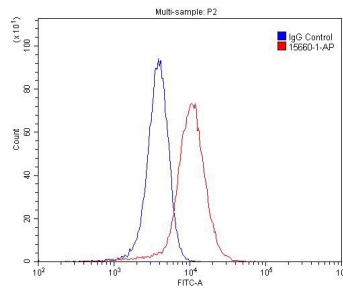
E: proteintech@ptglab.com
W: ptglab.com

This product is exclusively available under Proteintech Group brand and is not available to purchase from any other manufacturer.

Données de validation sélectionnées



Various lysates were subjected to SDS PAGE followed by western blot with 15660-1-AP (CADM3 antibody) at dilution of 1:1000 incubated at room temperature for 1.5 hours.



1×10^6 SH-SY5Y cells were stained with 0.2ug CADM3 antibody (15660-1-AP, red) and control antibody (blue). Fixed with 4% PFA blocked with 3% BSA (30 min). Alexa Fluor 488-conjugated AffiniPure Goat Anti-Rabbit IgG(H+L) with dilution 1:1500.