

À des fins de recherche uniquement

Anticorps Polyclonal de lapin anti-Islet 1



Numéro de catalogue: 15661-1-AP

3 Publications

Informations de base

Numéro de catalogue:

15661-1-AP

Taille:

150ul, Concentration: 800 µg/ml by Nanodrop and 287 µg/ml by Bradford method using BSA as the standard;

Hôte:

Lapin

Isotype:

IgG

Immunogen Catalog Number:

AG8088

Numéro d'acquisition GenBank:

BC031213

Identification du gène (NCBI):

3670

Nom complet:

ISL LIM homeobox 1

MW calculé

39 kDa

MW observés:

39 kDa, 45 kDa

Méthode de purification:

Purification par affinité contre l'antigène

Dilutions recommandées:

WB 1:500-1:2400

IP 0.5-4.0 ug for IP and 1:500-1:1000 for WB

IHC 1:20-1:200

IF 1:50-1:500

Applications

Applications testées:

FC, IF, IHC, IP, WB, ELISA

Demandes citées:

IF

Spécificité de l'espèce:

Humain

Espèces citées:

Humain

Remarque-IHC: il est suggéré de démasquer l'antigène avec un tampon de TE buffer pH 9,0; (*) A défaut, le démasquage de l'antigène peut être effectué avec un tampon citrate pH 6,0.

Contrôles positifs:

WB : cellules BxPC-3, cellules HeLa

IP : cellules HeLa,

IHC : tissu de cancer du pancréas humain, tissu pancréatique humain

IF : cellules SH-SY5Y,

Informations générales

ISL1 belongs to the LIM homeodomain transcription factor family that binds to the enhancer region of the INS gene. It plays a pivotal role in cardiogenesis, and lacking ISL1 expression results in growth arrest or displays profound defects in heart development, including atria, ventricle, and the inflow and outflow tracts.

Publications notables

Autrice	Pubmed ID	Journal	Application
Fangkun Liu	30599272	Neuroscience	IF
Daniel Kulick	36511510	ACS Chem Neurosci	
Jing Huang	29270148	Front Neurol	IF

Stockage

Stockage:

Stocker à -20°C. Stable pendant un an après l'expédition.

Tampon de stockage:

PBS avec azoture de sodium à 0,02 % et glycérol à 50 % pH 7,3

L'aliquotage n'est pas nécessaire pour le stockage à -20C

*** Les 20ul contiennent 0,1% de BSA.

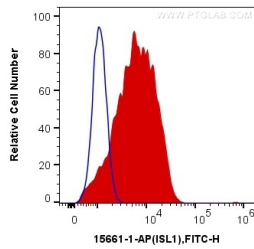
For technical support and original validation data for this product please contact:

T: 1 (888) 4PTGLAB (1-888-478-4522) (toll free in USA), or 1(312) 455-8498 (outside USA)

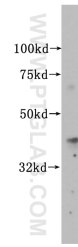
E: proteintech@ptglab.com
W: ptglab.com

This product is exclusively available under Proteintech Group brand and is not available to purchase from any other manufacturer.

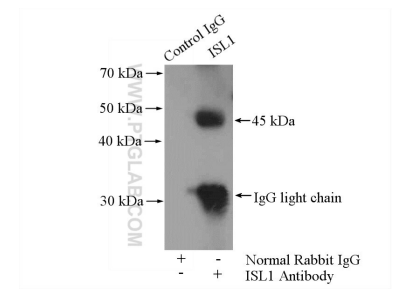
Données de validation sélectionnées



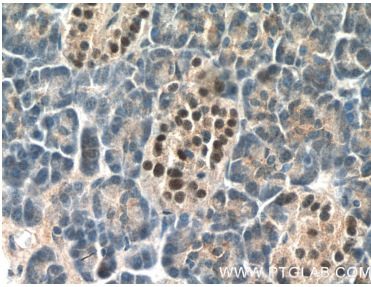
1X10⁶ SH-SY5Y cells were intracellularly stained with 0.2 ug Anti-Human Islet 1 (15661-1-AP) and CoraLite®488-Conjugated AffiniPure Goat Anti-Rabbit IgG(H+L) at dilution 1:1000 (red), or 0.2 ug Control Antibody. Cells were fixed with 4% PFA and permeabilized with 0.1% TritonX-100.



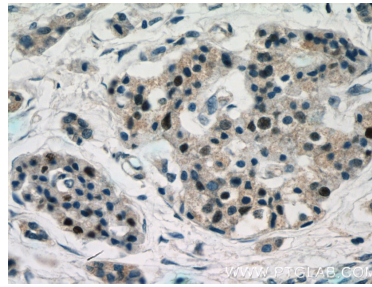
BxPC-3 cells were subjected to SDS PAGE followed by western blot with 15661-1-AP (ISL1 antibody) at dilution of 1:500 incubated at room temperature for 1.5 hours.



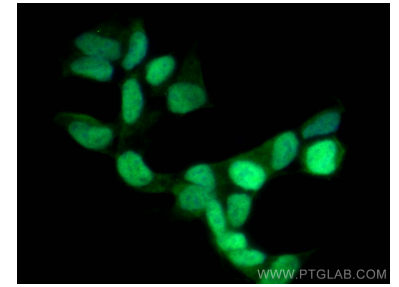
IP Result of anti-Islet 1 (IP:15661-1-AP, 4ug; Detection:15661-1-AP 1:500) with HeLa cells lysate 2000ug.



Immunohistochemical analysis of paraffin-embedded human pancreas tissue slide using 15661-1-AP (Islet 1 Antibody) at dilution of 1:200 (under 40x lens).



Immunohistochemical analysis of paraffin-embedded human pancreas cancer tissue slide using 15661-1-AP (Islet 1 Antibody) at dilution of 1:200 (under 40x lens).



Immunofluorescent analysis of (4% PFA) fixed SH-SY5Y cells using Islet 1 antibody (15661-1-AP) at dilution of 1:200 and CoraLite®488-Conjugated AffiniPure Goat Anti-Rabbit IgG(H+L).