

À des fins de recherche uniquement

Anticorps Polyclonal de lapin anti-SYNJ2BP



Numéro de catalogue: 15666-1-AP

Phare

9 Publications

Informations de base

Numéro de catalogue:

15666-1-AP

Numéro d'acquisition GenBank:

BC007704

Méthode de purification:

Purification par affinité contre l'antigène

Taille:

150ul, Concentration: 1000 µg/ml by Nanodrop and 400 µg/ml by Bradford method using BSA as the standard;

Identification du gène (NCBI):

55333

Nom complet:

synaptojanin 2 binding protein

Dilutions recommandées:

WB 1:500-1:2000

IP 0.5-4.0 ug for IP and 1:500-1:1000 for WB

IHC 1:20-1:200

IF 1:10-1:100

Hôte:

Lapin

MW calculé

145 aa, 16 kDa

Isotype:

IgG

MW observés:

16 kDa

Immunogen Catalog Number:

AG8130

Applications

Applications testées:

IF, IHC, IP, WB, ELISA

Demandes citées:

IF, IHC, IP, WB

Spécificité de l'espèce:

Humain, rat, souris

Espèces citées:

Humain, souris

Contrôles positifs:

WB : tissu rénal de souris, cellules A549, tissu cardiaque humain, tissu pulmonaire de souris, tissu rénal de rat

IP : tissu pulmonaire de souris,

IHC : tissu de cancer de l'estomac humain,

IF : cellules MCF-7, cellules HepG2

Remarque-IHC: il est suggéré de démasquer l'antigène avec un tampon de TE buffer pH 9.0; (*) A défaut, 'le démasquage de l'antigène peut être effectué avec un tampon citrate pH 6,0.

Informations générales

Activin, a member of the TGF-beta superfamily, plays important roles in reproductive tissues as a stimulator of follicle-stimulating hormone (FSH) secretion and inhibits the proliferation of breast cancer cells. Activin receptor-interacting protein 2 (ARIP2), also known as synaptojanin-2-binding protein (SYNJ2BP), is located in the outer membrane of mitochondria. ARIP2 is widely distributed in various human tissues, and has been recently identified in mouse tissues as a regulatory protein of activin signal transduction by interacting with activin type II receptors. ARIP2 may be a putative growth-promoting factor involved in breast tumorigenesis and tumor development. A double band of size 15.9 kDa can be detected in Western blot (PMID: 23284606).

Publications notables

Autrice	Pubmed ID	Journal	Application
Miao Wang	29163781	Oncotarget	WB, IHC, IP
Alina Guna	36264797	Science	WB
Michael J McKenna	36283413	Mol Cell	WB

Stockage

Stockage:

Stocker à -20°C. Stable pendant un an après l'expédition.

Tampon de stockage:

PBS avec azoture de sodium à 0,02 % et glycérol à 50 % pH 7,3

L'aliquotage n'est pas nécessaire pour le stockage à -20C

*** Les 20ul contiennent 0,1% de BSA.

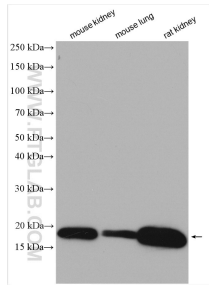
For technical support and original validation data for this product please contact:

T: 1 (888) 4PTGLAB (1-888-478-4522) (toll free in USA), or 1(312) 455-8498 (outside USA)

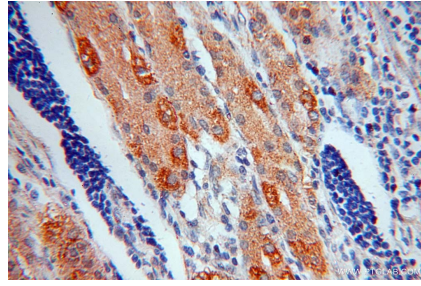
E: proteintech@ptglab.com
W: ptglab.com

This product is exclusively available under Proteintech Group brand and is not available to purchase from any other manufacturer.

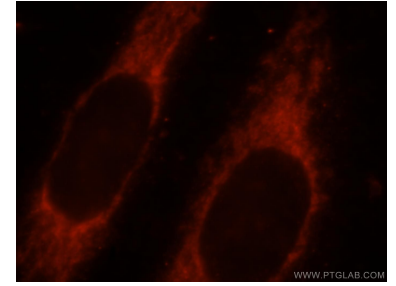
Données de validation sélectionnées



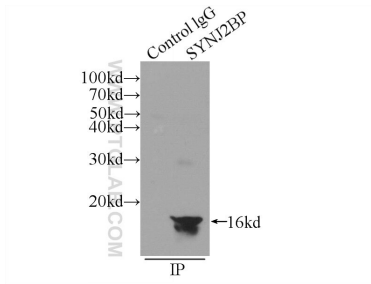
Various lysates were subjected to SDS PAGE followed by western blot with 15666-1-AP (SYNJ2BP antibody) at dilution of 1:1000 incubated at room temperature for 1.5 hours.



Immunohistochemical analysis of paraffin-embedded human stomach cancer using 15666-1-AP (SYNJ2BP antibody) at dilution of 1:50 (under 40x lens).



Immunofluorescent analysis of MCF-7 cells, using SYNJ2BP antibody 15666-1-AP at 1:25 dilution and Rhodamine-labeled goat anti-rabbit IgG (red).



IP Result of anti-SYNJ2BP (IP:15666-1-AP, 3ug; Detection:15666-1-AP 1:500) with mouse lung tissue lysate 4000ug.